

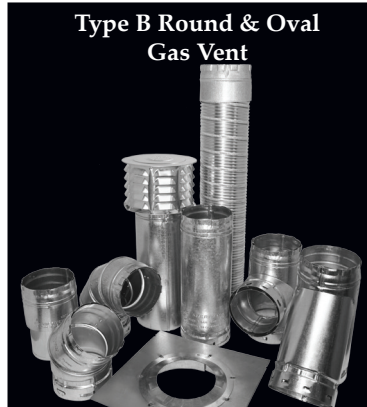
Direct Vent



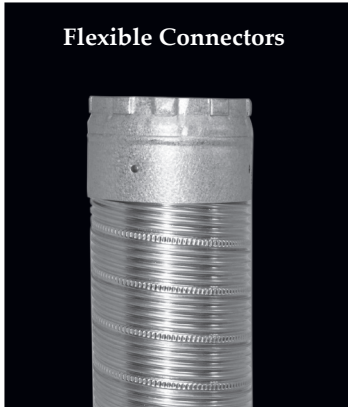
Pellet Vent



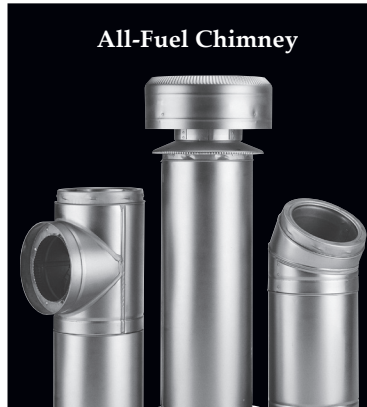
Type B Round & Oval
Gas Vent



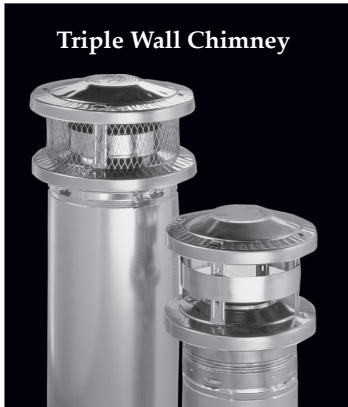
Flexible Connectors



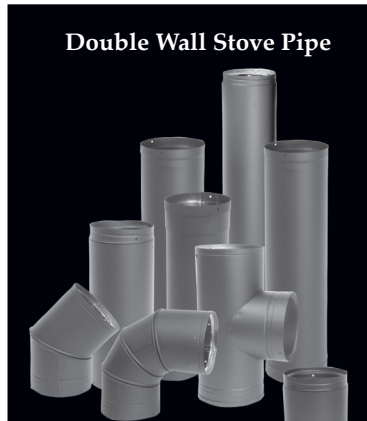
All-Fuel Chimney



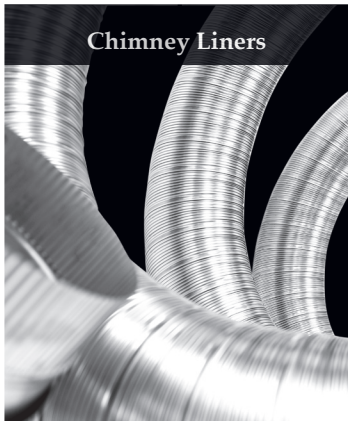
Triple Wall Chimney



Double Wall Stove Pipe



Chimney Liners



HEARTH PRODUCT Catalog

2016

VOLUME

 **AMERIVENT[®]**
Venting Solutions

TABLE OF CONTENTS

1	General Information about AmeriVent
2	Lifetime Warranty
95	Index

TLC AIL-FUEL CHIMNEY

3	Technical Information
7	Offset Chart
4-19	Product Descriptions and Dimensions
20	Typical Installations

MODEL HS / HSS CHIMNEY

21-22	Technical Information
23	Offset Chart
23-32	Product Descriptions and Dimensions
33	Chimney Kits
34	Installation Information

DIRECT VENT

35	Technical Information
37	Offset Chart
36-43	Product Descriptions and Dimensions
44	Chimney Conversion Kits
45	Termination Kits
46	Typical Installation

ULTIMATE PELLET PIPE

47	Technical Information
48-57	Product Descriptions and Dimensions
58	Pellet Pipe Kits

MODEL DCC DOUBLE WALL STOVE PIPE

59	Technical Information
61	Offset Chart
60-64	Product Descriptions and Dimensions
64	Typical Installation

STAINLESS STEEL CHIMNEY LINER - MODEL SLK

65	Technical Information
66-67	Product Descriptions and Dimensions

TYPE B GAS VENT

68	Technical Information
	<i>Round & Oval</i>
69	Termination Height Table
69	Offset Chart
70	System Design
71	Typical Installations
72-83	<i>Round</i> Product Descriptions and Dimensions
84-89	<i>Oval</i> Product Descriptions and Dimensions
	<i>Gas Vent Connectors</i>
90	Specifications
91-92	Product Descriptions and Dimensions
	<i>Aluminum Chimney Liners</i>
93	Technical Information
93	Product Description & Dimensions
94	Typical Installations



About AmeriVent

AmeriVent's complete offering of Hearth Venting Solutions brings quality and reliability to residential hearth applications. AmeriVent products are made of durable materials for longevity, are UL listed for safety, and backed by our installer preferred warranty. AmeriVent is your trusted source for residential venting and chimney.

CONTACT US

5030 Corporate Exchange Blvd. SE
Grand Rapids, MI 49512

www.ameri-vent.com
info@americanmetalproducts.com

Retail

1.800.252.8467
1.888.252.6444 Fax

Wholesale

1.800-423.4270
1-800.626.3825

Customer Portal

<http://portal.hartandcooleyinc.com>

Summittals & Specs

<http://www.ameri-vent.com/submittals-specs>

LIMITED LIFETIME WARRANTY FOR AMERIVENT

LIMITED LIFETIME WARRANTY

Ameri-Vent ("we," "us," "our") warrants chimney and venting products to be free from defects in material and workmanship for as long as the original consumer owns the system. For products installed after January 15, 2007, for a period of ten (10) years from original installation, we will provide replacement product with a similar or like quality of available product, free of charge excluding any installation costs. From the eleventh (11th) through fifteenth (15th) years, we will provide replacement product to the original consumer at a cost of 75% off the published retail price in effect on the date the claim is received, excluding any installation costs. At expiration of the fifteen (15) year term, we will provide replacement product to the original consumer at a cost of 50% off the published retail price in effect on the date the claim is received, excluding any installation costs.

PROFESSIONAL INSTALLATIONS:

If installation is performed by Professional Installers certified in the USA by NFI and CSIA, we will provide replacement product with a similar or like quality of available product, free of charge (excluding any installation costs) for the full Fifteen (15) years from the date of original installation. To be eligible for this additional warranty the consumer must provide a proof of installation by a Professional Installer when submitting a claim.

LIMITATIONS:

- Products must be installed for their intended purpose.
- Products must be connected to residential appliance listed with an accredited testing laboratory.

WARNING: FAILURE TO INSTALL PRODUCTS ACCORDING TO THE MANUFACTURER'S INSTRUCTIONS WILL VOID ALL APPLICABLE WARRANTIES AND MAY RESULT IN FIRE, CARBON MONOXIDE POISONING OR DEATH. SEE OUR PRODUCT INSTALLATION INSTRUCTIONS FOR COMPLETE INSTRUCTIONS.

WARRANTY COVERAGE:

All lengths, tees and elbows, and components are applicable to warranty coverage.

THIS LIMITED WARRANTY DOES NOT COVER:

- (a) any nonstainless base tee unit mounted or connected to an insulated chimney system;
- (b) costs (labor or otherwise**) associated with either removing a previously installed product, installing a replacement product, transportation or return of a product, or transportation of replacement product;
- (c) damage to the finish of products caused by the use of improper solvents/chemicals or improper cleaning methods;
- (d) damage resulting from failure to reasonably clean, care for, or maintain products in accordance with our installation instructions/recommendations;
- (e) damage (to products, appliances or structure) based on or resulting from improper installation or repair, misuse or abuse (including, but not limited to, excessive or improper operating condition), or alteration or adjustment other than in conformity with our installation instructions and specifications, whether performed by a contractor, service company, technician, or yourself;
- (f) any products that have been moved from their original installation site.
- (g) damage caused by burning driftwood, garbage, or any other prohibitive material in the appliance served by the chimney
- (h) damage that results from accidents such as fire, flood, high winds, "acts of God," or any other contingency beyond our control.

****Due to the wide variance in installation practices and other conditions beyond our control, we do not guarantee or in any way warrant the installation of chimney and venting products.**

CLAIM PROCEDURE:

If you believe that a product is defective, notify us in writing at the following location.

HCI
Attn: Warranty Claims
5030 Corporate Exchange Blvd. SE
Grand Rapids, MI 49512

P 800 423 4270 F 800 623 3825

Notification should include a description of the product, model and serial number (if applicable), and a description of the product defect. Upon receipt of a written claim under this limited warranty and evidence of the date of purchase or installation, at our option and in our sole discretion, we will provide replacement product with similar or like quality of available product excluding any installation costs. We reserve the right to inspect or investigate any warranty claims prior to determining whether to provide replacement product. If, as determined by us that repair or replacement of the product is not commercially practicable or cannot be completed in a timely manner, we may refund the prorated purchase price paid for the product upon verification by providing a copy of your invoice or receipt of bill of sale.



Model TLC All-Fuel Chimney offers current technology in factory-built chimney design by providing superior performance, durability and safety.

Certification & Applications



Model TLC is safety-tested and listed to applicable UL safety standards for chimneys serving solid-fuel and liquid-fuel appliances. This includes UL 103. This chimney system is designed for use on appliances that use solid, liquid or gas fuels under natural draft conditions.

Allowable flue gas temperatures are:

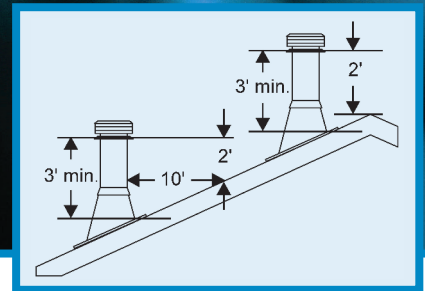
	Type HT 5" to 8"	Non-HT 10" to 14"
Maximum Continuous	1000°F	1000°F
Brief Forced Firing (1 hr)	1400°F	1400°F
Creosote Burn-Out (10min)	2100°F	1700°F

Enhanced Features

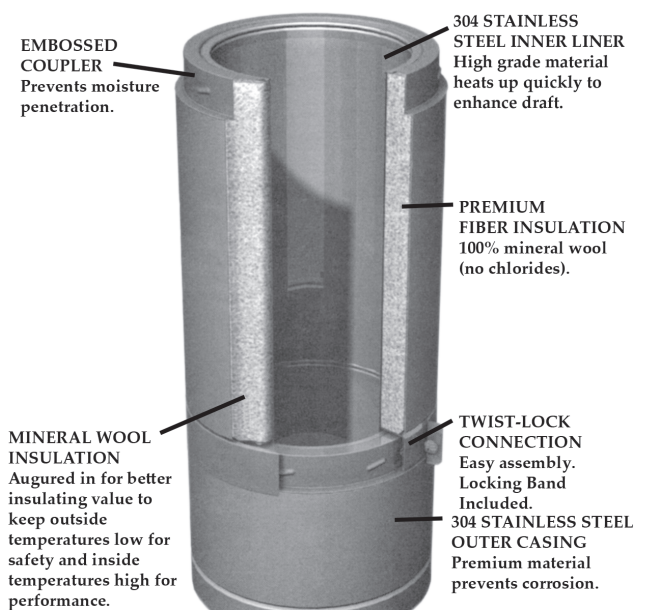
Model TLC is extremely corrosion-resistant. Both the inner liner and outer casings are constructed of 304 stainless steel. Embossed couplers do not allow moisture to penetrate the chimney's outer wall. Sections simply twist-lock together and are secured with Locking Bands. The Model TLC product line features deluxe chimney support components that will enhance any installation. Black trims are used to embellish the chimney support component parts that may be installed inside the home.

Height Requirements

The chimney must extend at least three feet above the highest point where it passes through the roof surface and at least two feet higher than any part of the building within a horizontal distance of ten feet.

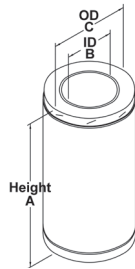


Sizes	5" to 14"
Inner Liner (Flue)	Type 304 Series Stainless Steel 0.016" thickness
Outer Casing	Type 304 Series Stainless Steel 0.015" thickness
Insulation	The 1" space between the inner/ outer walls is packed with mineral wool fiber insulation to provide superior insulating qualities in a slim-line design
Airspace Clearance to Combustibles	2"





CHIMNEY LENGTHS



Chimney Lengths

- Slim, advanced design of the 5" through 8" diameters allow for installation between 16" centers and still provide 2" clearance from combustible material
- Secure twist-lock design couples chimney sections together with just a 1/8 turn
- The included Locking bands secure joints
- 5" - 8" sections overlap by 1 1/8", 10" - 14" sections overlap by 1 1/4"
- Chimneys are sized according to the inner diameter and are available in 5" through 14"
- The outside diameter is 2" larger than the inside diameter

Stainless Steel Locking Bands



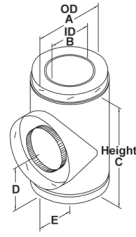
PART #	SIZE	A
5TLCLB	5"	7"
6TLCLB	6"	8"
7TLCLB	7"	9"
8TLCLB	8"	10"
10TLCLB	10"	12"
12TLCLB	12"	14"
14TLCLB	14"	16"

- Locking bands are used at joints for safety and stability
- Locking band flanges engage the curl in each end of the adjoining sections, holding them securely together.

PART #	SIZE	HEIGHT A	INSIDE B	OUTSIDE C
5TLC6	5"	6"	5"	7"
5TLC12	5"	12"	5"	7"
5TLC18	5"	18"	5"	7"
5TLC24	5"	24"	5"	7"
5TLC36	5"	36"	5"	7"
6TLC6	6"	6"	6"	8"
6TLC12	6"	12"	6"	8"
6TLC18	6"	18"	6"	8"
6TLC24	6"	24"	6"	8"
6TLC36	6"	36"	6"	8"
6TLC48	6"	48"	6"	8"
7TLC6	7"	6"	7"	9"
7TLC12	7"	12"	7"	9"
7TLC18	7"	18"	7"	9"
7TLC24	7"	24"	7"	9"
7TLC36	7"	36"	7"	9"
7TLC48	7"	48"	7"	9"
8TLC6	8"	6"	8"	10"
8TLC12	8"	12"	8"	10"
8TLC18	8"	18"	8"	10"
8TLC24	8"	24"	8"	10"
8TLC36	8"	36"	8"	10"
8TLC48	8"	48"	8"	10"
10TLC6	10"	6"	10"	12"
10TLC9	10"	9"	10"	12"
10TLC12	10"	12"	10"	12"
10TLC18	10"	18"	10"	12"
10TLC24	10"	24"	10"	12"
10TLC36	10"	36"	10"	12"
12TLC6	12"	6"	12"	14"
12TLC9	12"	9"	12"	14"
12TLC12	12"	12"	12"	14"
12TLC18	12"	18"	12"	14"
12TLC24	12"	24"	12"	14"
12TLC36	12"	36"	12"	14"
14TLC6	14"	6"	14"	16"
14TLC9	14"	9"	14"	16"
14TLC12	14"	12"	14"	16"
14TLC18	14"	18"	14"	16"
14TLC24	14"	24"	14"	16"
14TLC36	14"	36"	14"	16"



TEE COMPONENTS



Insulated Tee with Tee Cap

- Used for through-the-wall installation with a wall support (sold separately)
- A chimney length is required to pass safely through a wall

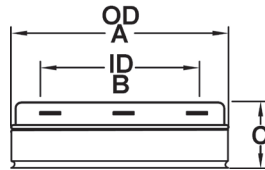
PART #	SIZE	OD-A	ID-B	C	D	E
5TLCT	5"	7"	5"	10 1/2"	5"	5"
6TLCT	6"	8"	6"	11 1/2"	5 5/8"	5 3/4"
7TLCT	7"	9"	7"	12 1/4"	6 1/4"	6 3/16"
8TLCT	8"	10"	8"	13 3/8"	6 5/8"	6 1/2"
10TLCT	10"	12"	10"	16 3/4"	8 3/8"	8 3/8"
12TLCT	12"	14"	12"	18 3/4"	9 3/8"	9 3/8"
14TLCT	14"	16"	14"	20 3/4"	10 3/8"	10 3/8"

Includes the following:

One locking band

5" to 8" sizes have an uninsulated (single-wall) twist-lock tee cap.

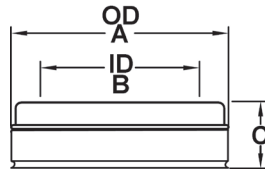
10" to 14" sizes have an insulated press fit tee cap.



Insulated Tee Cap

- Permits typical 2" airspace clearance to combustibles
- 5" to 8" sizes are twist-lock
- 10" to 14" sizes are press-fit design
- 5" to 8" sizes cannot be used with the Adjustable Wall Support

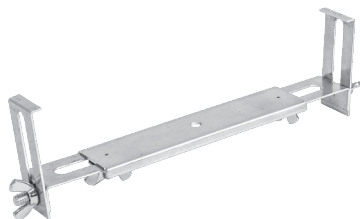
PART #	SIZE	OD A	ID B	C
5TLCITP	5"	7"	5"	2 7/8"
6TLCITP	6"	8"	6"	2 7/8"
7TLCITP	7"	9"	7"	2 7/8"
8TLCITP	8"	10"	8"	2 7/8"
10TLCITP	10"	12"	10"	2 7/8"
12TLCITP	12"	14"	12"	2 7/8"
14TLCITP	14"	16"	14"	2 7/8"



Non-Twist-Lock Insulated Tee Cap

- 5" to 8" sizes

PART #	SIZE	OD A	ID B	C
5TLCITC	5"			
6TLCITC	6"			
7TLCITC	7"			
8TLCITC	8"			



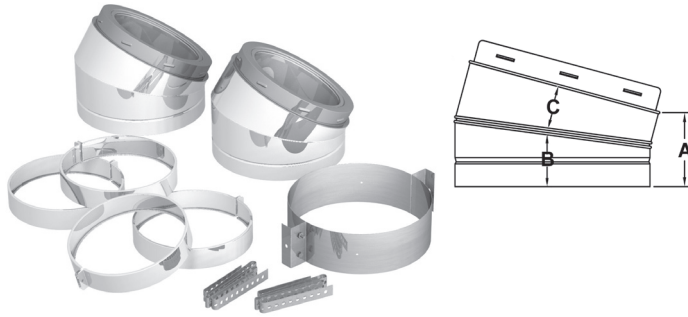
Universal Tee Cap Retainer

- Secures tee cap on the bottom side of insulated tee
- Adjusts to fit chimney diameters 5"-8"
- Used when support is above insulated tee

PART #	SIZE
TLCTCR	5" - 8"



ELBOWS



15° and 30° Elbow Kits

- The insulated elbow is used when offset is required
- Locking bands must be used on all elbows
- A maximum of 6' is allowable between offsets
- Elbow is fully insulated and can be used with the same 2" clearance as chimney lengths
- Elbow support must be used with all offset installations and will support 15' of chimney
- Elbows do not have twist-locking ridges, so they can be rotated to attain optimum positioning and allow chimney to return to correct vertical alignment prior to installing locking bands
- May not be used outdoors

15° Elbow Kits

5TLCEK15	5"	3 3/8"	2 7/16"	11 5/16"
6TLCEK15	6"	3 3/8"	2 1/2"	2"
7TLCEK15	7"	3 3/8"	2 9/16"	2 1/16"
8TLCEK15	8"	3 3/8"	2 5/8"	2 1/8"
10TLCEK15	10"	2 1/2"	5 1/2"	NA
12TLCEK15	12"	2 1/4"	5 3/4"	NA
14TLCEK15	14"	2"	6"	NA

30° Elbow Kits

5TLCEK30	5"	2 3/4"	2 9/16"	2 9/16"
6TLCEK30	6"	3 1/4"	3 1/16"	2 9/16"
7TLCEK30	7"	3 3/4"	3 7/16"	21 5/16"
8TLCEK30	8"	4 1/4"	3 7/8"	3 3/8"
10TLCEK30	10"	5"	3 7/8"	3 1/2"
12TLCEK30	12"	4"	4 1/4"	4"
14TLCEK30	14"	4 1/4"	4 1/4"	4 1/4"

Elbow kits include:

2 elbows (Exception: 12" and 14" sizes include four 15° elbows assembled into two 30° elbows)

2 locking bands (Exception: 12" 14" sizes include four locking bands)

1 elbow support

All hardware

CHIMNEY OFFSET CHARTS

It may be necessary to offset the chimney in order to clear a joist or an obstacle. The Offset Charts will assist you in selecting the proper combination of elbow angle and chimney length(s) that will provide the necessary offset within an available height.

1. Select the column with the proper chimney diameter of your system.
2. Determine the distance of the offset required by dropping a plumb line for an accurate measurement. The offset is measured at the chimney centerline, as per the "A" Offset measurement in the diagram below.
3. On the chart, find the predetermined distance (under the "A" column) required for the 15° elbow. For greater offset, use the 30° offset chart.
4. After finding the offset, look at the "B" (height) measurement in the chart to find the specified height. The appropriate "chimney lengths" required in between elbows is found in the left-hand side column of each chart.

NOTE:

- Model TLC chimneys are limited to offsets not exceeding 30°
- Combining elbows for greater angle is not permitted
- One pair of (two) elbows may be used for interior installation only
- Never install an elbow in a joist area. Chimney sections must pass vertically through framed joist areas.
- Locking Bands must be used at all chimney joints
- Each elbow resupport will support 15' of chimney
- The maximum length of chimney allowed between elbows is 6'

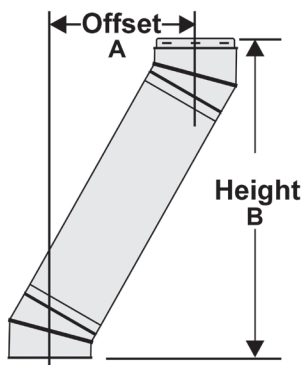


15° OFFSET CHART

Chimney Length	5" Diameter		6" Diameter		7" Diameter		8" Diameter		10" Diameter		12" Diameter		14" Diameter	
	A	B	A	B	A	B	A	B	A	B	A	B	A	B
none	1 1/2"	9"	1 1/8"	10"	1 1/8"	10 1/4"	1 1/4"	10 3/8"	1 1/4"	9 1/2"	1	7 18/25"	1 3/50"	8 1/4"
6"	2 1/18"	13 1/2"	2 3/8"	14 1/4"	2 3/8"	15"	2 1/2"	15 5/8"	2 3/4"	14"	2 23/100"	12 31/100"	2 29/100"	12 21/25"
12"	4"	19 1/8"	4"	20 1/2"	4 1/16"	20 3/4"	4 1/8"	21"	4"	19 3/4"	3 39/50"	18 1/10"	3 39/50"	18 63/100"
18"	5 1/2"	25"	5 1/2"	26 1/4"	5 1/2"	26 1/2"	5 5/8"	26 3/4"	5 1/2"	25 63/100"	5 33/100"	23 9/10"	5 39/100"	24 43/100"
24"	7 1/2"	30 1/2"	7"	32"	7 1/16"	32 1/4"	7 1/8"	32 1/2"	7 13/100"	31 19/50"	6 8/9"	29 69/100"	6 19/20"	30 2/9"
36"	10 1/8"	42"	10 1/4"	43 5/8"	10 1/4"	44"	10 1/4"	44 1/8"	10 1/4"	43"	10"	41 7/25"	10 1/20"	41 41/50"
6"+36"	11 1/4"	48 1/4"	11 3/8"	48 3/8"	11 1/2"	48 5/8"	11 1/2"	48 7/8"	N/A	N/A	N/A	N/A	N/A	N/A
12"+36"	12 3/4"	54"	13"	54 1/8"	13"	54 3/8"	13"	54 5/8"	N/A	N/A	N/A	N/A	N/A	N/A
18"+36"	14 3/8"	59 3/4"	14 1/2"	60"	14 1/2"	60 1/8"	14 5/8"	60 3/8"	N/A	N/A	N/A	N/A	N/A	N/A
24"+36"	16"	65 1/2"	16 1/8"	65 3/4"	16 1/8"	66"	16 1/8"	66 1/4"	N/A	N/A	N/A	N/A	N/A	N/A
12"+24"+36"	19"	76 1/4"	19"	76 1/4"	19"	76 1/2"	19"	76 3/4"	N/A	N/A	N/A	N/A	N/A	N/A
48"	13 5/8"	54 1/8"	13 1/4"	55 1/8"	13 1/4"	55 3/8"	13 3/8"	55 1/2"	N/A	N/A	N/A	N/A	N/A	N/A

30° OFFSET CHART

Chimney Length	5" Diameter		6" Diameter		7" Diameter		8" Diameter		10" Diameter		12" Diameter		14" Diameter	
	A	B	A	B	A	B	A	B	A	B	A	B	A	B
none	3"	10"	2 3/4"	11 5/8"	3 1/8"	13"	3 1/2"	14 1/2"	3 23/25"	15 9/50"	3 23/25"	14 63/100"	4 19/100"	15 63/100"
6"	5 1/4"	14"	5 1/4"	15 7/8"	5 5/8"	17 1/4"	6"	18 3/8"	6 3/10"	19 26/100"	6 3/10"	18 37/50"	64 57/100"	19 37/50"
12"	9"	19 1/4"	8 1/4"	21"	8 5/8"	22 3/8"	9"	24"	9 3/10"	24 49/100"	9 3/10"	23 93/100"	9 14/25"	24 93/100"
18"	11 1/4"	24 1/2"	11 1/4"	26 1/4"	11 5/8"	27 5/8"	12"	29 1/8"	12 3/10"	29 7/10"	12 3/10"	29 7/50"	12 57/100"	30 7/50"
24"	14 1/4"	29 3/4"	14 1/4"	31 3/8"	14 5/8"	32 7/8"	15"	32 3/8"	15 3/10"	34 8/9"	15 3/10"	34 1/5"	15 57/100"	35 3/10"
36"	20"	39 3/4"	20 1/4"	41 7/8"	20 5/8"	43 1/4"	21"	44 3/4"	21 3/10"	45 27/100"	21 29/100"	44 18/25"	21 14/25"	45 18/25"
6"+36"	21 7/8"	44 1/2"	22 5/8"	46"	23"	47 1/2"	23 1/2"	49"	N/A	N/A	N/A	N/A	N/A	N/A
12"+36"	23 7/8"	50 1/8"	25 5/8"	51 1/4"	26"	52 5/8"	26 1/2"	54 1/8"	N/A	N/A	N/A	N/A	N/A	N/A
18"+36"	27 1/8"	55 1/8"	28 5/8"	56 3/8"	29"	57 3/8"	29 1/2"	59 3/8"	N/A	N/A	N/A	N/A	N/A	N/A
24"+36"	30 3/8"	60 5/8"	31 5/8"	61 5/8"	32"	63"	32"	64 1/2"	N/A	N/A	N/A	N/A	N/A	N/A
12"+24"+36"	37"	69 3/8"	37 1/8"	71"	37 1/2"	72 1/2"	38"	74"	N/A	N/A	N/A	N/A	N/A	N/A
48"	26 3/8"	50 1/2"	26 1/8"	52 1/8"	26 1/2"	53 1/2"	26 7/8"	55"	N/A	N/A	N/A	N/A	N/A	N/A

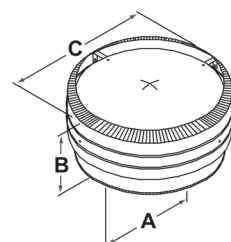


Construction tolerances: +/- 1"

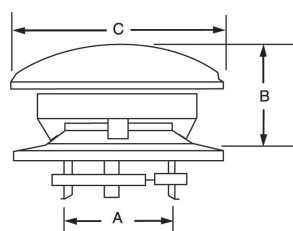


RAIN CAPS

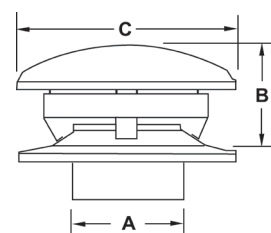
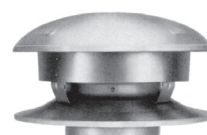
- Protects the system from penetration of rain, debris, birds, and other elements



5" to 8" Model TLCC with Twist-Lock Connection



5" to 8" Model TLCCD with Cinch Band Connection



10" to 14" Model TLCC with Expanding Collar Connection

5" to 8" Model TLCC w/Twist Lock Connection

5TLCC	5"	7"	7 ½"	11 ¼"
6TLCC	6"	8"	7 ½"	11 ¼"
7TLCC	7"	9"	7 ½"	13 ¼"
8TLCC	8"	10"	8"	14 ¼"

5" to 8" Model TLCCD w/Cinch Band Connection

5TLCCD	5"	7"	5"	10"
6TLCCD	6"	8"	5 ½"	12"
7TLCCD	7"	9"	6 ¼"	14"
8TLCCD	8"	10"	7"	16"

10" to 14" Model TLCC w/Expanding Collar Connection

10TLCC	10"	10"	8 ½"	20"
12TLCC	12"	12"	10"	24"
14TLCC	14"	14"	11 ½"	28"

SPARK ARRESTERS

PART # SIZE

For use with 5" to 14" caps

5TLCSA	5"
6TLCSA	6"
7TLCSA	7"
8TLCSA	8"
10TLCSA	10"
12TLCSA	12"
14TLCSA	14"

Fits Model TLCCD Round Top only (5", 6", 7", 8")

5TLC SAD	5"
6TLC SAD	6"
7TLC SAD	7"
8TLC SAD	8"



Use with TLCC 5" to 14" Caps



Use with Model TLCCD Cap



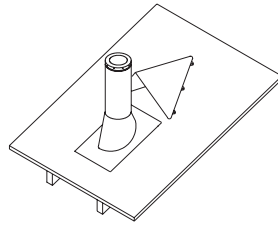
UNIVERSAL SNOW SPLITTER

PART #

SIZE

TLCSSA

5" to 8"



Universal Snow Splitter

- Designed to deflect snow and ice
- Prevents unnecessary strain and damage to the chimney
- Mounts directly above the chimney pipe
- Easy panel assembly
- Made from durable heavy gauge galvanized steel
- Non-UL listed component

WALL BANDS

PART #

SIZE

A

B

5TLCWB

5"

7"

17"

6TLCWB

6"

8"

17"

7TLCWB

7"

9"

17"

8TLCWB

8"

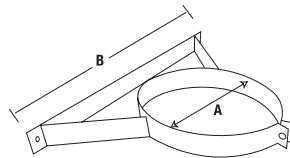
10"

17"

10TLCWB 10"

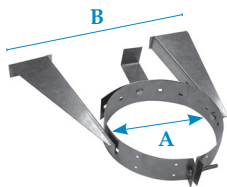
12TLCWB 12"

14TLCWB 14"



Wall Band

- 5" - 14" sizes
- Stainless Steel construction
- Provides lateral support for the chimney when installed adjacent to a wall
- Maintains the mandatory 2" clearance to combustibles



PART #

SIZE

A

B

TLCAWB

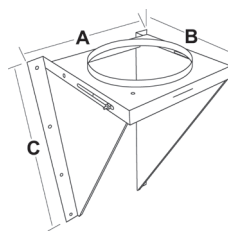
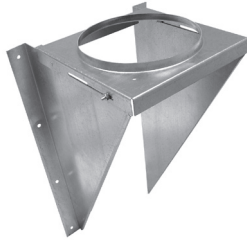
5" to 8"

Universal Adjustable Wall Band

- Provides lateral support for the chimney when installed along vertical wall
- Provides more than 4" of horizontal adjustability to clear obstructions
- Required at 8' or closer intervals to stabilize chimney



WALL SUPPORT



PART #	ADJUSTABILITY	SIZE	A	B	C
5TLCAWS	6"	5"	12"	10 5/8"	18 1/2"
6TLCAWS	6"	6"	12"	10 5/8"	18 1/2"
7TLCAWS	6"	7"	13"	11 5/8"	20 1/2"
8TLCAWS	6"	8"	14"	12 5/8"	21 1/2"
10TLCAWS	6"	10"	16"	14 5/8"	25 1/4"
12TLCAWS	NONADJUSTABLE	12"	19"	16 1/2"	23"
14TLCAWS	NONADJUSTABLE	14"	21"	18 1/2"	27"

Adjustable Wall Support

- Used to support the chimney on a through-the-wall installation
- 2" to 6" clearance away from wall
- 5" to 8" sizes support between 30' and 74' of chimney, based on size and orientation (See instructions for specific heights)
- 10" to 14" sizes support up to 40' of chimney
- 12" to 14" sizes are nonadjustable supports

Includes the following:

5" to 8" sizes include top plate, side brackets, hardware, non-twist-lock insulated tee cap, and a long L-bracket to hold tee cap in place

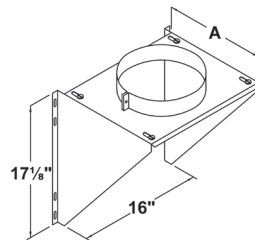
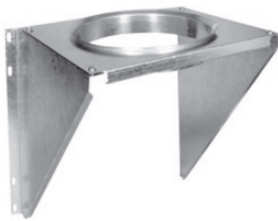
10" to 14" sizes do not include the cap. Use tee cap packaged with tee.



L-Bracket
5" to 8" sizes



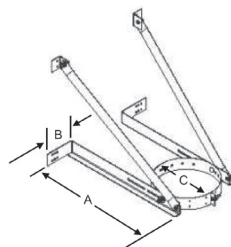
Non-Twist-Lock Insulated Tee Cap
5" to 8" sizes
Also sold separately



PART #	SIZE	A
6TLCIWS	6"	11"
7TLCIWS	7"	12"
8TLCIWS	8"	13"

Adjustable Intermediate Wall Support

- Used as supplemental support when chimney system height exceeds maximum height allowed by wall support
- Supports an additional 38' of chimney
- Includes top plate, support band, side brackets, and hardware



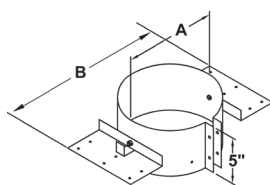
PART #	SIZE	A	B	C
TLCEWS	5"- 8"	22"	5"	7"- 10"

Universal Extended Wall Support

- Designed to support a vertical installation above the insulated tee
- Will support up to 28' of chimney
- Adjusts up to 12" from a vertical wall



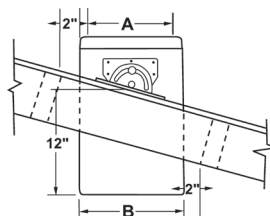
ROOF SUPPORT



PART #	SIZE	A	B
5TL CRS	5"	7"	16"
6TL CRS	6"	8"	17"
7TL CRS	7"	9"	18"
8TL CRS	8"	10"	19"

Adjustable Roof Support

- The roof support may be used on a roof and adjusts to any roof pitch
- It may be used above an offset to support the offset or as a supplemental support when the chimney height exceeds that of the primary support
- Supports a total of 30' of chimney with up to 20' below support
- Does not act as a firestop

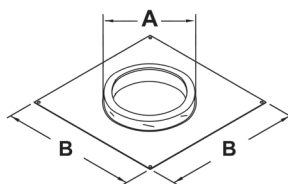
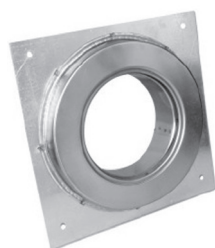


PART #	SIZE	A	B
10TL CRS	10"	10"	12"
12TL CRS	12"	12"	14"
14TL CRS	14"	14"	16"

Adjustable Roof Support with Pipe

- Contains one 18" length of pipe with roof brackets preinstalled (Includes hardware)
- Fits all roof pitches
- Mounts easily on top of roof
- Supports a total of 30' with up to 20' below the support
- Does not act as a firestop

ANCHOR PLATE



PART #	SIZE	A	B
5TLCAP	5"	7"	11 5/8"
6TLCAP	6"	8"	11 5/8"
7TLCAP	7"	9"	11 5/8"
8TLCAP	8"	10"	11 5/8"
10TLCAP	10"	12"	13 1/4"
12TLCAP	12"	14"	15 1/4"
14TLCAP	14"	16"	17 1/4"

Anchor Plate

- To be used on masonry fireplaces and with specifically listed zero-clearance fireplaces for direct connection of all-fuel chimney
- 5" to 8" sizes are 14-gauge galvanized base plate, and 10" to 14" sizes are 10-gauge galvanized base plate
- Coupler and inside wall are premium stainless steel



ROOF BRACES

PART # SIZE

TLCHDRBK 5" to 8"



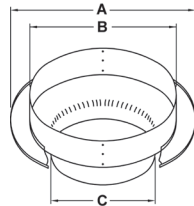
Heavy Duty Roof Brace Kit

- Provides lateral stability for the chimney system above the roof line
- Required when the chimney extends 5' or more above the roof
- One kit should be used every 5' of chimney
- Includes telescoping legs that adjust from 5' - 9'
- Support band fits chimney sizes 5" - 8"

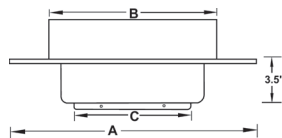
CEILING SUPPORTS

PART # SIZE A B C

5TLCCSR	5"	16 7/8"	11 3/8"	6 3/7"
6TLCCSR	6"	17 7/8"	12 3/8"	7 3/4"
7TLCCSR	7"	18 7/8"	13 3/8"	8 3/4"
8TLCCSR	8"	19 5/8"	14 3/8"	9 3/4"
10TLCCSR	10"	18 1/2"	16 1/4"	10 1/4"

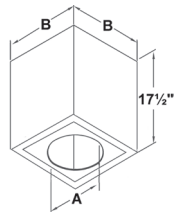


Round Plate Ceiling Support 5" to 8"



Square Plate Ceiling Support 10"

- For use in flat ceiling support installations
- Supports a total of 50' of chimney above
- Chimney pipe cannot pass below support
- Matte black finish with ceiling ring to cover rough opening
- Also acts as a firestop
- Must always use stovepipe adapter



Cathedral Ceiling Support Box

- Used in pitched ceiling support installations
- Supports a total of 38' of chimney with up to 15' below support
- Includes support clamp, allowing chimney pipe to pass below support
- Matte black finish with ceiling trim to cover rough opening
- Also acts as a firestop with use of trim plate
- 12/12 maximum pitch

PART #	SIZE	A	B
5TLCCSS	5"	7 1/8"	11"
6TLCCSS	6"	8 1/8"	12"
7TLCCSS	7"	9 1/8"	13"
8TLCCSS	8"	10 1/8"	14"



CEILING SUPPORTS (CONTINUED)

PART #

SIZE

A

B

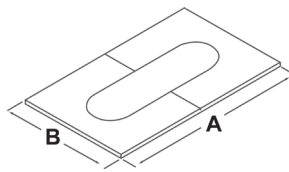
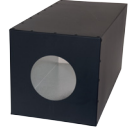


Square Steep Ceiling Support

- Description

6TLCCCSA

Includes Box, Adapter, and Brackets



Adjustable Ceiling Plate

- Matte black finish
- Adjusts to multiple ceiling pitches
- Covers 2" space around chimney for attractive finish

PART #

SIZE

A

B

Flat to 6/12 Pitch

5TLCACP	5"	18" TO 29"	15 ½"
6TLCACP	6"	19" TO 30"	16 ½"
7TLCACP	7"	20" TO 31"	17 ½"
8TLCACP	8"	21" TO 33"	18 ½"
10TLCACP	10"	23" TO 37"	20 ½"
12TLCACP	12"	25" TO 41"	22 ½"
14TLCACP	14"	27" TO 45"	24 ½"

6/12 TO 12/12 Pitch

5TLCACPT	5"		
6TLCACPT	6"		
7TLCACPT	7"		
8TLCACPT	8"		
10TLCACPT	10"		
12TLCACPT	12"		
14TLCACPT	14"		

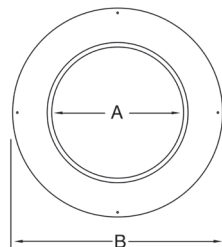
TRIM COLLAR

PART #

SIZE

A

B



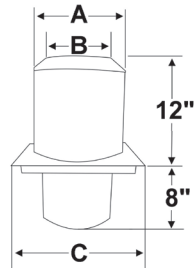
Trim Collar - Matte Black

- Used on wall support installations when passing through a noncombustible wall
- Matte black finish for an enhanced handcrafted appearance

5TLCTC	5"	7 ⅛"	16"
6TLCTC	6"	8 ⅛"	16"
7TLCTC	7"	9 ⅛"	16"
8TLCTC	8"	10 ⅛"	16"



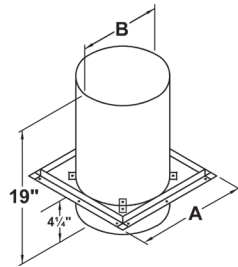
SHIELDS



Attic Insulation Shield

- Must be installed where the chimney enters the attic space
- Designed to keep insulation away from the chimney and to maintain the mandatory 2" clearance to combustibles
- When properly framed, also acts as a firestop
- Not to be used for enclosed chimneys passing through attic. Instead, use firestop radiation shield and rafter radiation shield
- Includes a drop-down joist shield

PART #	SIZE	A	B	C
5TLCIS	5"	11"	7 1/8"	13"
6TLCIS	6"	12"	8 1/8"	14"
7TLCIS	7"	13"	9 1/8"	15"
8TLCIS	8"	14"	10 1/8"	16"
10TLCIS	10"	16"	12 1/8"	18"
12TLCIS	12"	18"	14 1/8"	20"
14TLCIS	14"	20"	16 1/8"	22"



Firestop Radiation Shield

- Required where an enclosed chimney passes from a lower living space into an upper living space
- Maintains the mandatory 2" clearance to combustibles

PART #	SIZE	A	B
5TLCFRS	5"	13"	9"
6TLCFRS	6"	14"	10"
7TLCFRS	7"	15"	11"
8TLCFRS	8"	16"	12"

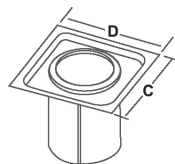
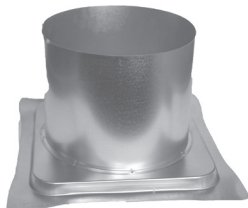


Plate on top of joist

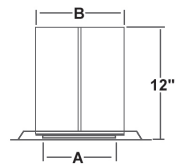
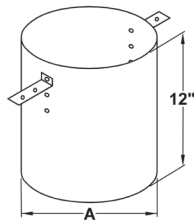


Plate on bottom of joist

Firestop Joist Shield

- Used in floor/ceiling penetrations, other than those that include a ceiling support
- Not required when passing through roof

PART #	SIZE	A	B	C	D
10TLCFRS	10"	12 1/8"	14"	18"	16"
12TLCFRS	12"	14 1/8"	16"	20"	18"
14TLCFRS	14"	16 1/8"	18"	22"	20"
Can be installed in either orientation					



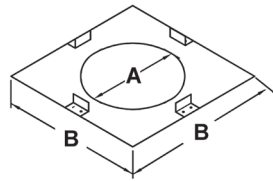
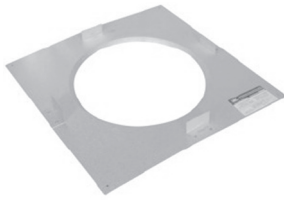
Rafter Radiation Shield

- The rafter radiation shield must be installed immediately below the roof flashing, inside any enclosure

PART #	SIZE	A
5TLCRRR	5"	9"
6TLCRRS	6"	10"
7TLCRRS	7"	11"
8TLCRRS	8"	12"



SHIELDS (CONTINUED)

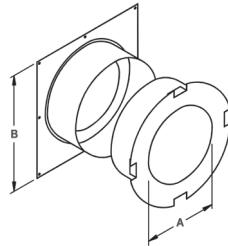


PART #	SIZE	A	B
5TLCSP	5"	7 1/8"	13"
6TLCSP	6"	8 1/8"	14"
7TLCSP	7"	9 1/8"	15"
8TLCSP	8"	10 1/8"	16"

Soffit Plate

- Used where the chimney passes through a flat soffit to provide a finished appearance
- Maintains the mandatory 2" clearance to combustibles
- Does not act as a firestop

WALL THIMBLE



PART #	SIZE	A	B
5TLCWTB	5"	7 1/8"	16"
6TLCWTB	6"	8 1/8"	16"
7TLCWTB	7"	9 1/8"	16"
8TLCWTB	8"	10 1/8"	16"
10TLCWTB	10"	12 1/8"	18"
12TLCWTB	12"	14 1/8"	20"
14TLCWTB	14"	16 1/8"	24"

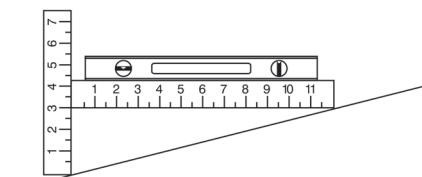
Wall Thimble - Black

- Used in a through-the-wall installation
- Radiation shield is included with spacers which keep the shield centered inside the framed opening for 5" to 8"
- Attractive matte black finishing trim plate is included
- Adjustable wall thickness from 4 1/2" to 8 3/4" for 5" to 8" sizes and from 6" to 11" for 10" to 14" sizes



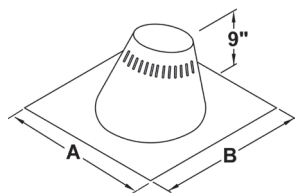
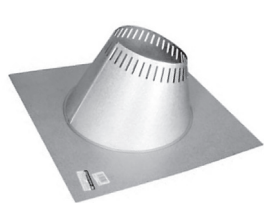
FLASHING

ROOF FLASHING SELECTION CHART



This example shows a 3/12 pitch

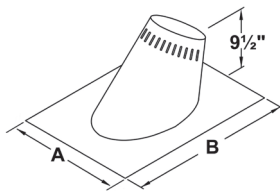
To determine what roof flashing you'll require, you must determine the pitch of the roof. To determine the pitch, you'll need two rulers and a level. Measure the number of inches from the end of the level ruler down to the roof.



Flat to 6/12 Pitch - Adjustable Flashing Assembly

- Used where the chimney passes through a roof with a pitch of Flat to 6/12
- Comes complete with storm collar
- All seams are sealed with silicone sealant
- Galvalume construction

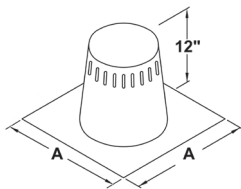
PART #	SIZE	A	B
5TLCF6	5"	24"	24"
6TLCF6	6"	24"	24"
7TLCF6	7"	24"	24"
8TLCF6	8"	27 1/2"	27 1/2"
10TLCF6	10"	27"	31 7/8"
12TLCF6	12"	36"	36 3/8"
14TLCF6	14"	36"	36 3/8"



6/12 to 12/12 Pitch - Adjustable Flashing Assembly

- Used where the chimney passes through a roof with a pitch of 6/12 to 12/12
- Comes complete with storm collar
- All seams are sealed with silicone sealant
- Galvalume construction

PART #	SIZE	A	B
5TLCF12	5"	21 1/2"	30"
6TLCF12	6"	21 1/2"	30"
7TLCF12	7"	21 1/2"	30"
8TLCF12	8"	21 1/2"	30"
10TLCF12	10"	36"	37 1/2"
12TLCF12	12"	36"	40 1/2"
14TLCF12	14"	36"	43 1/2"



Tall Cone Flashing

- 0/12 to 2/12 pitch
- All seams are sealed with silicone sealant
- Galvalume construction
- Comes complete with storm collar

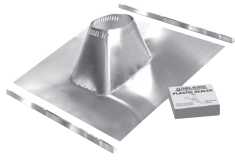
PART #	SIZE	A
5TLCFF	5"	24" X 24"
6TLCFF	6"	24" X 24"
7TLCFF	7"	24" X 24"
8TLCFF	8"	24" X 24"
10TLCFF	10"	30" X 30"
12TLCFF	12"	32" X 32"
14TLCFF	14"	34" X 34"



FLASHING (CONTINUED)

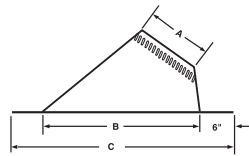
PART # SIZE

TLCMRFK 5" - 8"



Universal Metal Roof Flashing Kit

- Used in conjunction with a standard TLC flashing
- Flashing sold separately



PART #	SIZE	A	B	C	D
6TLCDSF6	6"	8 1/8"	16 1/2"	30"	33"
7TLCDSF6	7"	9 1/8"	16 1/2"	30"	33"
8TLCDSF6	8"	10 1/8"	19 7/8"	30"	33"

1/12 to 6/12 Dead Soft Flashing

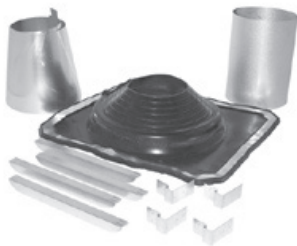
- Flashing base designed to be molded to uneven roof surfaces
- Fits 1/12 to 6/12 roof pitch
- Dead soft aluminum base plate
- Storm Collar purchased separately



PART #	SIZE	A	B	C	D
6TLCDSF12	6"				
7TLCDSF12	7"				
8TLCDSF12	8"				

7/12 to 12/12 Dead Soft Flashing

- Flashing base designed to be molded to uneven roof surfaces
- Fits 7/12 to 12/12 roof pitch
- Dead soft aluminum base plate
- Storm Collar purchased separately



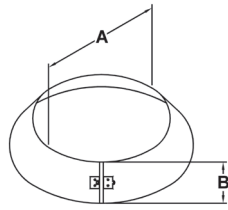
PART #	SIZE
TLCRBF	5" - 8"

Rubber Boot Flashing Kit

- This kit fits 5", 6", 7" and 8" chimneys
- Used where the chimney passes through a corrugated roof
- 8" Rubber boot flashing fits roof pitches up to 10/12
- 5"-7" Rubber boot flashing fits roof pitches up to 12/12
- UL-listed
- Kit includes: Special Storm Collar, Rubber Boot, Spacer Kit, Special Boot-Mounting Screws



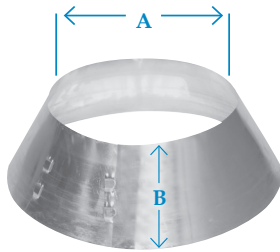
STORM COLLAR



PART #	SIZE	A	B
5TLCSC	5"	7"	4 ½"
6TLCSC	6"	8"	4 ½"
7TLCSC	7"	9"	4 ½"
8TLCSC	8"	10"	4 ½"
10TLCSC	10"	12"	5 ½"
12TLCSC	12"	14"	5 ½"
14TLCSC	14"	16"	5 ½"

Storm Collar

- Used in conjunction with roof flashing to keep precipitation out



PART #	SIZE	A	B
TLCASC56	5" - 6"	7" - 8"	5 ½"
TLCASC78	7" - 8"	8" - 10"	5 ½"

Storm Collar - Adjustable

- Used in conjunction with roof flashing to keep precipitation out



PART

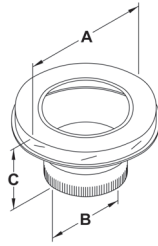
TLCSS

Silicone Sealant for Storm Collars

- Used to seal storm collar to chimney length above cone of flashing
- 3 ounce tube



ADAPTER

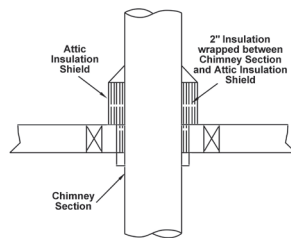


PART #	SIZE	A	B	C
5TLCSPA	5"	7"	5"	5 1/16"
6TLCSPA	6"	8"	6"	5 1/16"
7TLCSPA	7"	9"	7"	5 1/16"
8TLCSPA	8"	10"	8"	5 1/16"
10TLCSPA	10"	12"	10"	3"
12TLCSPA	12"	14"	11"	3"
14TLCSPA	14"	16"	12"	3"

Stovepipe Adapter

- For quick and easy transition from black stovepipe to factory-built chimney
- Twist-lock for easy connection
- 5" to 8" is black
- Stainless Steel

INSULATION



PART #	SIZE
TLCSI	12" X 48" X 2"

Shielding Insulation Wrap

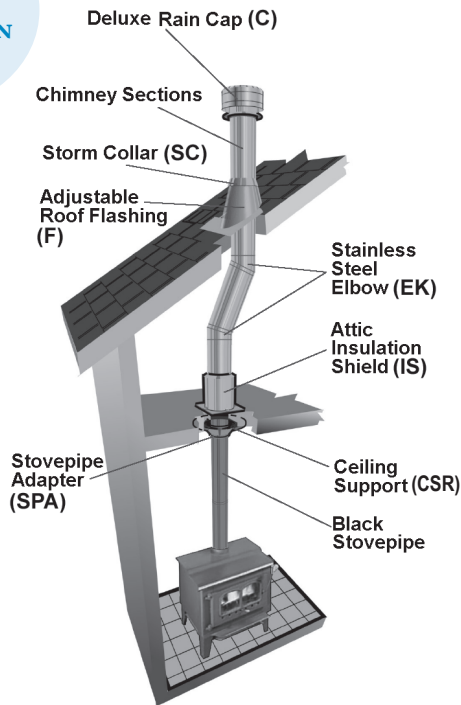
- For use with Attic Insulation Shield, Wall Thimble and Cathedral Ceiling Support Box
- Protects against radiant heat from the chimney
- Helps maintain temperatures within the chimney system and within the housing envelope to prevent condensation on exterior
- UL-listed specifically for TLC chimney



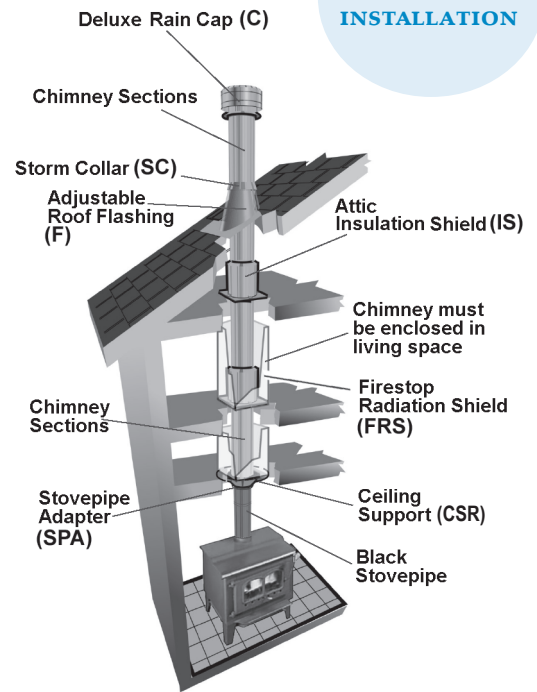
*For better draft & reduced clearances, use the
MODEL DCC DOUBLE WALL STOVE PIPE.*

DECORATOR CEILING SUPPORT INSTALLATIONS

ONE-STORY INSTALLATION

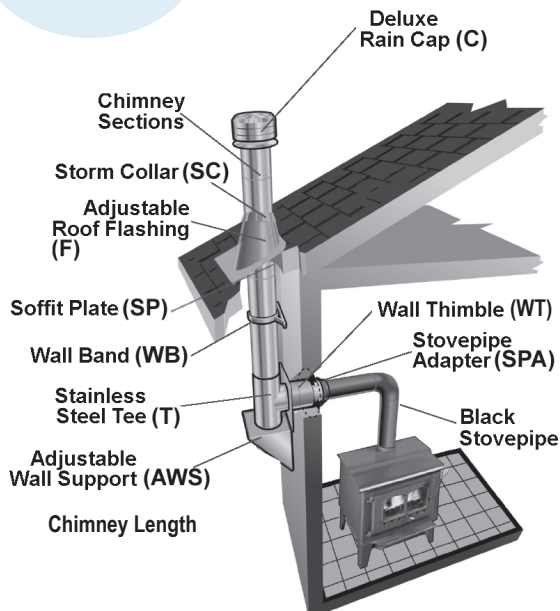


MULTI-STORY INSTALLATION



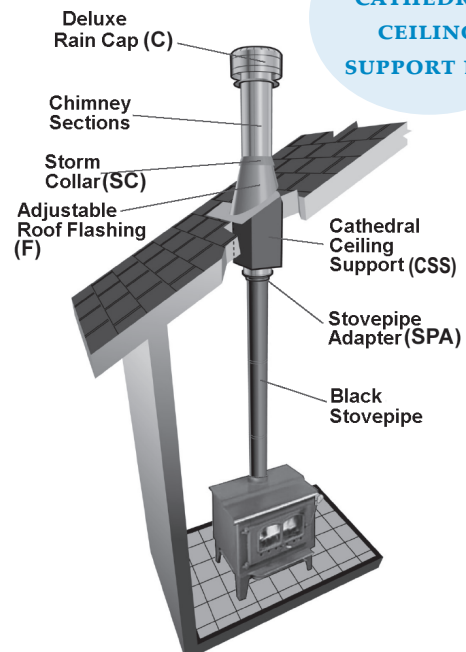
WALL SUPPORT INSTALLATION

THROUGH A SOFFIT



CATHEDRAL SUPPORT INSTALLATIONS

WITH CATHEDRAL CEILING SUPPORT BOX





All-Fuel Chimney Model HS Chimney is listed (UL 103 TYPE HT) for venting flue gases not exceeding 1000°F under continuous operating conditions. In addition, UL has conducted additional tests at 1400°F for one hour and 2100°F for 10 minutes to verify compliance with UL test standards. The Model HS incorporates a design woven ceramic fiber refractory blanket. Surrounded by two inner walls, this asbestos-free blanket has excellent high temperature stability, so it stays in place. It is noncombustible, thin, and lightweight. As a result, the Model HS chimney pipe features the same small outer dimensions and is compatible with our Model FB. It is light enough to be easily installed by one person.



The Model HS blanket exhibits superior resistance to high temperature deterioration. Its insulation has proven so effective that it is used as a fire retardant in aircraft, railroad tank cars, chemical facilities, and commercial buildings.

Model HS is built to last with a system combining corrosion resistant stainless steel and sturdy galvanized steel. All this adds up to extra protection for your customers through AMP's advanced chimney temperature engineering.

Model 10FB Chimney is listed (UL 103) for venting flue gases not exceeding 1000°F under continuous operating conditions. UL has also conducted tests at 1400°F for one hour and 1700°F for 10 minutes to verify compliance with UL test standards.



Model 10FB is engineered for venting all gas or liquid-fueled appliances and non-airtight solid-fueled fireplace stoves.

Pro-Line Chimney Components

This unique collection of chimney components offers distributors an opportunity to respond to the strong consumer interest in interior design styling. In addition to the standard Model HS chimney components, AMP offers a choice of Pro-Line features, including a square support, a durable black finish, an adjustable roof support, a wide-open design cap, and other components.

Specifications and Dimensions

Usage	The AmeriVent chimney is suitable for use on the following types of appliances:	
	Residential-type Appliances	Ranges, warm air furnaces, water heaters, hot water heating boilers, 15 psig or less steam boilers, floor furnaces, room heaters and fireplace stoves
	Building Heating Appliances	Nonresidential type building heating appliances, steam boilers operating at not over 1000°F flue gas temperature.
	<i>Chimney may also be used where Type B gas vents are permitted</i>	
Available Sizes	(I.D.) 6", 8", and 10"	
Nomenclature	Chimneys, Residential Type and Building Heating Appliance, also known as Type A Chimney and Factory-Built Chimney.	
Approved, Accepted, or Listed by	UL, NFPA, FHA, VA, NBC, UMC, ICBO	

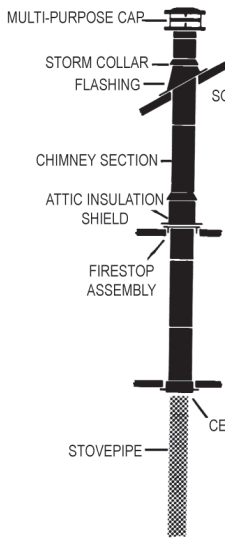
Construction

	Model HS/HSS	Model 10FB
Inner Wall	.015" 430 Stainless Steel	.012" 430 Stainless Steel
Insulation	½" Ceramic Fiber Blanket	Air on Air Space
Intermediate Wall	.012" 430 Stainless Steel	.018" Aluminized Steel
Outer Wall	.018" Galvanized Steel (HS) .015" 430 Stainless Steel (HSS)	.018" Galvanized Steel
Temperature Limits	1000°F for continuous operation. Also tested at 1400°F for periods up to one hour and Model HS 2100°F for up to 10 minutes. Model 10FB, 1700°F for up to 10 minutes. (These are standard industry wide limits.)	
Weights per Foot	6" = 4lbs, 8" = 5lbs, 10" = 5 ¾"	
Maximum Height	90' when using Ceiling Supports or Roof Supports. 30' when using Wall Supports and ARSA Adjustable Roof Support Assembly.	
Clearances from Chimney Pipe to Combustibles	Chimney sections (pipe) must be installed with at least a 2" airspace clearance to combustible (including roof construction), except in the support area where clearance is established by installation of the supports.	

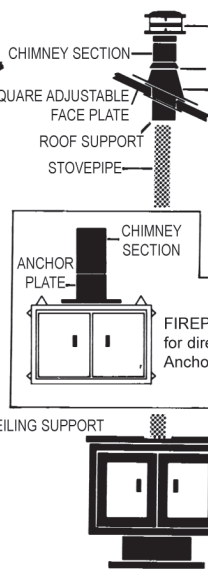


Shown below are the ways to install AmeriVent Pro-Line Chimney Systems.

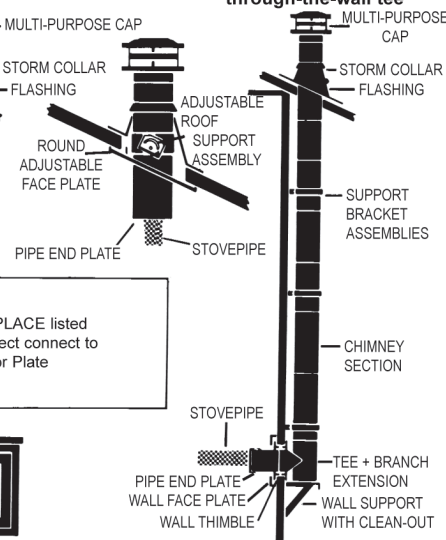
STANDARD installation using ceiling support



OPEN BEAM CEILING installation using roof supports



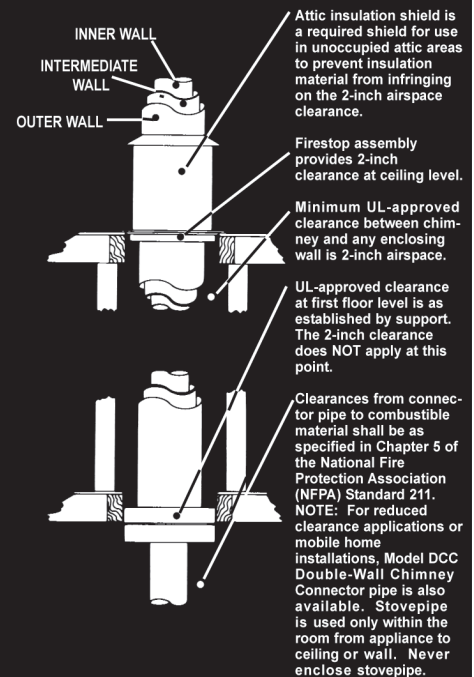
EXTERIOR WALL installation using wall support, brackets and through-the-wall tee



Chimney must be enclosed where it passes through occupied spaces to maintain required clearances to combustibles and to protect against damage.

NOTE: Outside chimneys are not as desirable, since they are more subject to downdrafts and creosote buildup. An enclosure is highly recommended.

Installation Clearances as Approved by UL



NOTE: Standard 6" and 8" Supports fit between regular 16" O.C. joists. 8PL-ARSA 15" min. opening.



CHIMNEY LENGTHS



Chimney Lengths

- Combine corrosion-resistant stainless steel and sturdy galvanized steel for strong chimney construction
- Lightweight and snap-lock joints offer faster, easier installations
- Also available with a stainless steel outer wall for corrosive environments, Model HSS
- Available in lengths: 6", 12", 18", 24", 36", 48"

PART #	SIZE	ID	OD
--------	------	----	----

6HS-6	6"	6"	9"
6HSS-6	6"	6"	9"
6HS-12	6"	6"	9"
6HSS-12	6"	6"	9"
6HS-18	6"	6"	9"
6HSS-18	6"	6"	9"
6HS-24	6"	6"	9"
6HSS-24	6"	6"	9"
6HS-36	6"	6"	9"
6HSS-36	6"	6"	9"
6HS-48	6"	6"	9"
6HSS-48	6"	6"	9"
8HS-6	8"	8"	11"
8HSS-6	8"	8"	11"
8HS-12	8"	8"	11"
8HSS-12	8"	8"	11"
8HS-18	8"	8"	11"
8HSS-18	8"	8"	11"
8HS-24	8"	8"	11"
8HSS-24	8"	8"	11"
8HS-36	8"	8"	11"
8HSS-36	8"	8"	11"
8HS-48	8"	8"	11"
8HSS-48	8"	8"	11"
10FB-36	10"	10"	13"

ELBOWS



15° and 30° Elbow Set

- For use in pairs to permit chimney to "go around" joists, rafters or other projections
- Add chimney sections between offsets to produce additional offset
- Elbows are available with a stainless steel outer wall for corrosive environments, Model HSS
- Includes two elbows

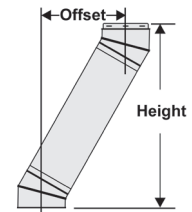
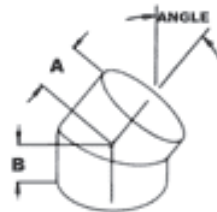
PART #	A	B
--------	---	---

15° Elbow Set

6HS-015	4 3/8"	4 3/4"
6HSS-015	4 3/8"	4 3/4"
8HS-015	5"	5 1/2"
8HSS-015	5"	5 1/2"

30° Elbow Set

6HS-030	4 3/8"	4 3/4"
6HSS-030	4 3/8"	4 3/4"
8HS-030	5"	5 1/2"
8HSS-030	5"	5 1/2"



CHIMNEY OFFSET CHART

Part #	(2) Elbows		(2) Elbows +6" Section		(2) Elbows +12" Section		(2) Elbows +18" Section		(2) Elbows +24" Section		(2) Elbows +36" Section		(2) Elbows +48" Section	
	X	Y	X	Y	X	Y	X	Y	X	Y	X	Y	X	Y
6HS-015	1 3/4"	17 3/4"	3 1/4"	23"	4 3/4"	28 1/4"	6 1/4"	33 1/2"	7 3/4"	38 3/4"	10 3/4"	49 1/4"	13 3/4"	59 3/4"
6HS-030	4"	17"	7"	22 1/4"	10"	27 1/2"	13"	32 3/4"	16"	38"	22"	48 1/2"	28"	59"
8HS-015	2 1/4"	21"	3 3/4"	27"	5 1/4"	30 1/2"	6 3/4"	36 1/2"	8 1/4"	42"	11 1/4"	53 1/2"	14 1/4"	65"
8HS-030	4 1/2"	19 1/2"	7 1/2"	25"	10 1/2"	28 1/2"	13 1/2"	34"	16 1/2"	39"	22 1/2"	49 1/2"	28 1/2"	60"



TEE COMPONENTS



Chimney Tee Assembly

- Consists of a chimney tee, tee branch (made up of one 12" section of chimney), single-wall adapter, pipe end plate, and tee cap
- Use this combination where connection to the chimney is made to the branch of the tee in a through-the-wall installation

Chimney Tee

- Available in a galvanized or stainless steel outer wall

Chimney Tee

PART #	A	B
6HS-T 6HSS-T	16"	3"

8HS-T 8HSS-T	18"	3"
-----------------	-----	----

Chimney Tee Assembly

6HS-TA 6HSS-TA	16"	3"
-------------------	-----	----

8HS-TA 8HSS-TA	18"	3"
-------------------	-----	----



Inner Wall Tee Cap

- The pressed-fit cap fits over the bottom end of the inner wall of the Tee

PART # SIZE

6HS-TCAP 6"

8HS-TCAP 8"



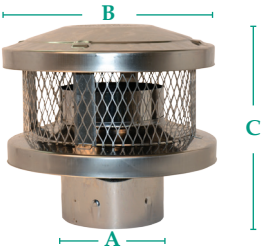
Pro-Line: Outer Wall Insulated Tee Cap

- Screws to the outer wall of the tee, suspended below an Adjustable Roof Support Assembly

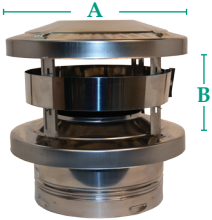
PART # SIZE A

6PL-ITC 6" 9"

8PL-ITC 8" 11"

**RAIN CAPS****Multi-Purpose Cap with Arrestor**

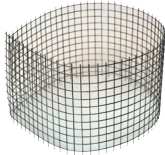
- The durable, all stainless steel constructed cap is designed to minimize downdraft, and features its own spark arrestor/bird debris screen secured to the inside of the pipe

**Pro-Line: Multi-Purpose Cap**

- Features a wide-open design to reduce creosote and a wind band to meet or exceed UL rain test requirements
- Minimizes downdraft
- A spark arrestor is available to comply with local codes
- Locks onto the outside wall of the pipe.

PART #	SIZE	A	B	C
6HS-RCS	6"	6"	12"	11 ¼"
7HS-RCS	7"	7"	14"	11 ¼"
8HS-RCS	8"	8"	14"	11 ¼"
10FB-RC w/o Spark Arrestor	10"	10"	23 ½"	10"

PART #	SIZE	A	B
6PL-MPC	6"	12"	6"
8PL-MPC	8"	14"	6"

SPARK ARRESTOR

PART #	SIZE
6PL-SA	6"
8PL-SA	8"
10FB-SA	8" <i>not pictured</i>

Pro-Line: Spark Arrestor/Bird Screen

- Designed to fit the Chimney Cap and meets applicable code requirements

WALL BAND**Wall Band Assembly**

- Used to support chimney pipe offset or to secure outdoor chimney to exterior wall while maintaining the proper 2-inch clearance to wall

PART #	SIZE
6HS-SBA	6"
8HS-SBA	8"
10FB-SBA	10"



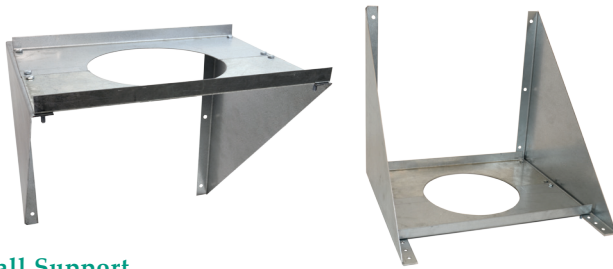


WALL SUPPORT

PART # SIZE

6HS-WS 6"

8HS-WS 8"



Wall Support

- Supports the chimney tee and chimney
- Attach brackets to wall above or below heavy gauge base plate
- Includes insulated tee cap
- The 2-part plate is secured to the bead at the bottom of the chimney tee

ROOF SUPPORTS

PART # SIZE A MAXIMUM CEILING PITCH

Single Wall
Connector

Double Wall
Connector

6HS-RSA12 6" 18" 0 - 6/12 0 - 10/12

6HS-RSA24 6" 36" 7/12 - 14/12 11/12 - 22/12

8HS-RSA12 8" 18" 0 - 6/12 0 - 10/12

8HS-RSA24 8" 36" 7/12 - 14/12 11/12 - 22/12

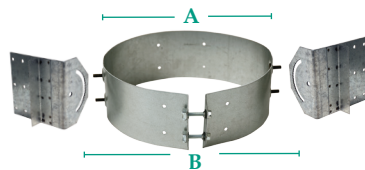


Includes: Stainless Steel black single-wall adapter

Trim Plate sold separately

Roof Support Box

- Used for exposed-beam ceiling installations
- Available in a black finish
- Use Ceiling Support Assembly when chimney is to be installed in flat ceiling



PART # SIZE A B

6PL-ARSA 6" 9" 13"

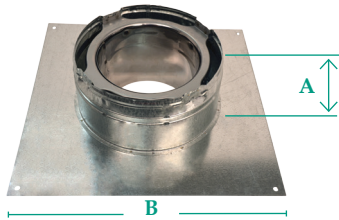
8PL-ARSA 8" 11" 15"

Pro-Line - Adjustable Roof Support

- Designed for sloped or open-beam ceiling construction in retrofit installations
- Adjusts from flat to 24/12 roof pitches
- Use with the Round Adjustable Face Plate Trim Collar



ANCHOR PLATE

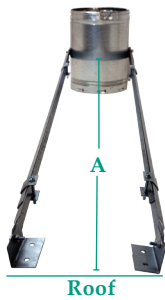


PART #	SIZE	A	B
6HS-AP	6"	4 1/8"	15"
8HS-AP	8"	4 1/8"	15"
10FB-AP	10"	4 1/8"	15"

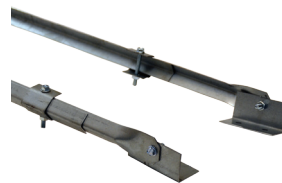
Anchor Plate

- A starter piece used to support and connect chimney sections to a masonry firebox or an appliance that is specifically listed for direct connection to an Anchor Plate and chimney system

ROOF BRACES



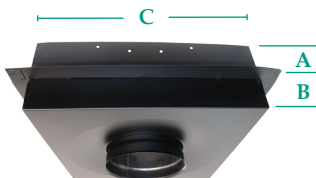
PART #	SIZE	A
6HS-RBK	6"	Adjustable 4 1/2' to 7'
8HS-RBK	8"	Adjustable 4 1/2' to 7'



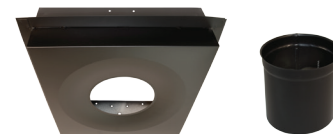
Roof Brace Kit

- Used for tall chimneys or in windy areas to stabilize the chimney above the roof
- Must be used when chimney is 5' or more above the roof

CEILING SUPPORTS



PART #	SIZE	A	B	C
6HS-CSA	6"	3"	2"	14 1/4" sq
8HS-CSA	8"	3"	2"	14 1/4" sq

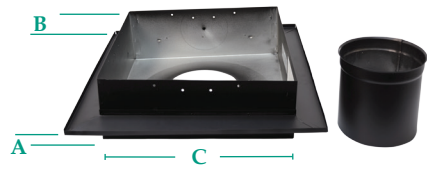


Ceiling Support Assembly

- Used when a chimney is installed in a flat ceiling
- Available in a black finish, the 6" and 8" sizes fit between regular 16" O.C. ceiling joists, and are cartoned with a stainless steel black single-wall adapter
- For open-beam ceiling installations, use Roof Support Assembly



CEILING SUPPORTS (CONTINUED)

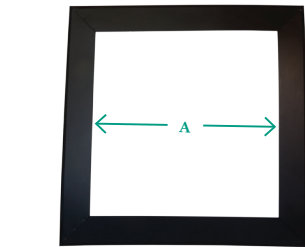


PART #	SIZE	A	B	C
6PL-CSS-BK	6"	3"	2"	14 ¼" sq
8PL-CSS-BK	8"	3"	2"	14 ¼" sq

Pro-Line - Ceiling Support Square

- Available in a black finish, the Ceiling Support Square is designed for flat ceiling chimney installations
- Sizes fit between regular 16" O.C. ceiling joists
- Decorative flange eliminates the need for additional trim plate
- Use with single-wall adapter
(For open-beam ceiling installations, use Roof Support or Adjustable Roof Support Assembly)

TRIM COLLARS



PART #	SIZE	A
HS-CSFP	6" and 8"	14 ¾"

Ceiling Support Trim Collar

- Available in a black finish
- Conceals the rough opening where the support passes through the ceiling
- Optional 1-piece trim plate used to supplement trim around CSA Ceiling Support Assembly



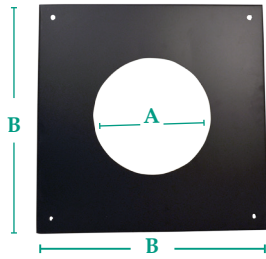
PART #	SIZE	A	B
HS-RSFP	6" and 8"	14 ¾"	18 ¼"

Roof Support Trim Collar

- Standard, flat, 2-piece trim used to cover the rough opening where the HS-RSA passes through the ceiling

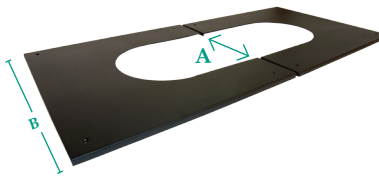


TRIM COLLARS: PRO-LINE



Pro-Line: Wall Trim Collar

- Features a 1-piece trim collar with an attractive 3/8" flange for use with Wall Thimble and on flat ceilings for Adjustable Roof Support Assembly



Pro-Line: Round Adjustable Trim Collar

- A black heavy duty 2-piece decorative trim for use with the adjustable roof support assembly and sloped ceilings, fitting up to 24/12 pitch applications



Pro-Line: Square Adjustable Trim Collar

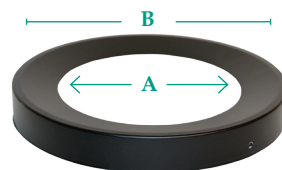
- Consists of a two-piece trim collar that conceals a rough opening where the roof support passes through the ceiling
- Available in a black finish

PART #	SIZE	A	B	CEILING PITCH
6PL-WFP-BK	6"	9 1/4"	18 1/4"	Flat
8PL-WFP-BK	8"	11 1/4"	18 1/4"	Flat

PART #	SIZE	A	B	CEILING PITCH
* must be trimmed to ceilings steeper than 12/12				
6PL-R2FP-BK	6"	9 1/4"	18 1/4"	Flat to 2/12
6PL-R4FP-BK	6"	9 1/4"	18 1/4"	3/12 to 4/12
6PL-R6FP-BK	6"	9 1/4"	18 1/4"	5/12 to 6/12
6PL-R8FP-BK	6"	9 1/4"	18 1/4"	7/12 to 11/12
* 6PL-R12FP-BK	6"	9 1/4"	18 1/4"	11/12 to 24/12
8PL-R2FP-BK	8"	11 1/4"	18 1/4"	Flat to 2/12
* 8PL-R12FP-BK	8"	11 1/4"	18 1/4"	11/12 to 24/12

PART #	SIZE	A	B	CEILING PITCH
PL-SAFP-BK	6"	14 3/8"	18 1/4"	Flat to 24/12
	8"	14 3/8"	18 1/4"	Flat to 24/12

PLATES



Stove pipe sold separately

PART #	SIZE	A	B
6HS-EP	6"	6 1/16"	9 1/8"
8HS-EP	8"	8 1/16"	11 1/8"

Pipe End Plate

- Used in conjunction with the single-wall adapter to close off the end of the HS/HSS chimney pipe and provide conversion to black stove pipe in through-the-wall and adjustable-roof-support installations



PLATES (CONTINUED)

PART # SIZE

6PL-EPI 6"

8PL-EPI 8"



Pro-Line: Insulated End Plate

- An insulation donut used inside the End Plate and around the SWA to prevent wet, warm air from getting inside the walls of the chimney on adjustable roof supports installations



PART # SIZE A

6PL-TS12-BK 6" 12"

6PL-TS48-BK 6" 48"

8PL-TS12-BK 8" 12"

8PL-TS48-BK 8" 48"

Pro-Line: Trim Sleeve

- Provides an attractive transition from black stovepipe to HS/HSS chimney in a cathedral ceiling

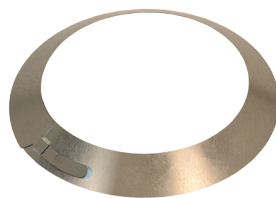
STORM COLLARS

PART # SIZE

6SC 6"

8SC 8"

10SC 10"



Storm Collar

- Used with flashings to ensure a watertight installation



PART # SIZE A

PL-ASCWG 6", 8" 3 1/2" Galvanized

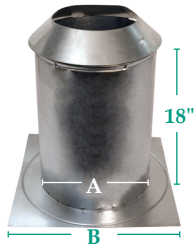
PL-ASCWA 6", 8" 3 1/2" Aluminum

Pro-Line: Storm Collar Adjustable

- The multiple-size Adjustable Storm Collar fits both 6" and 8" chimney pipe, and is available in galvanized (ASCWG) and aluminum (ASCWA)
- Use ASCWG with galvanized flashings and the ASCWA with Aluminum flashings

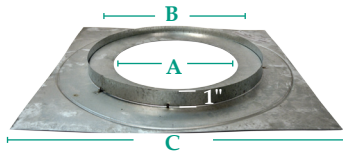


SHIELDS



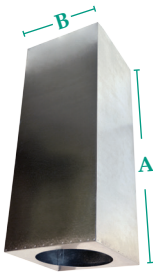
Attic Insulation Shield

- Required in unoccupied attic areas to prevent insulation material from infringing on the 2" airspace clearance



Firestop Assembly

- Required at each floor level, except at ceiling support or roof support, in order to provide correct spacing to combustible materials as the chimney passes through a combustible floor



Firestop Joist Shield

- Used when installing an 8" chimney in a 16" O.C. joist construction
- Provides UL-approved clearance between the chimney and the joist
- Also serves as a firestop

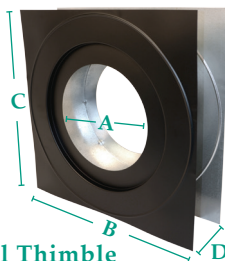
PART #	SIZE	A	B
6HS-AIS	6"	9"	18"
8HS-AIS	8"	11"	18"

Includes Storm Collar

PART #	SIZE	A	B	C
6HS-FSA	6"	9"	13"	18"
8HS-FSA	8"	11"	15"	18"

PART #	SIZE	A	B
8HS-JS	8"	36"	14 1/4"

WALL THIMBLE



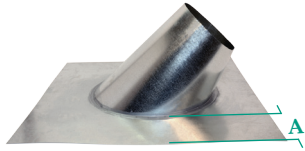
Wall Thimble

PART #	SIZE	A	B	C	D
6HS-WTP	6"	9"	13"	18"	Adj from
8HS-WTP	8"	11"	15"	18"	4½" to 8"

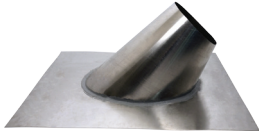
- Used with a tee branch and chimney section to provide proper clearance to combustible materials
- The black painted surface for an interior wall eliminates the need for a trim plate



FLASHING

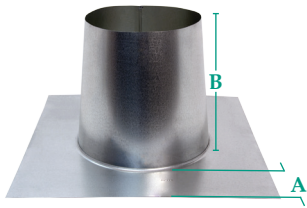


Round Flashing Galvanized - 6FFU12



Round Flashing Aluminum - 6PL-AFFU12

- Available in galvanized and aluminum models flat to 6/12 pitch (Standard), as well as for steeper pitches of 7/12 to 12/12, 13/12 to 18/12, and 19/12 to 24/12.



Tall Cone Flashing

- Used for flat to 1/12 pitch roofs, as well as on flat roofs in snowpack areas to reduce chances of leakage

PART #	SIZE	PITCH	(A) SKIRT	METAL
6F 6PL-AF	6"	Std. Flat to 6/12	4"	Galvanized Aluminum
8F 8PL-AF	8"	Std. Flat to 6/12	4"	Galvanized Aluminum
6FFU 6PL-AFFU	6"	Flat to 6/12	6"	Galvanized Aluminum
8FFU 8PL-AFFU	8"	Flat to 6/12	6"	Galvanized Aluminum
6FFU12 6PL-AFFU12	6"	7/12 to 12/12	6"	Galvanized Aluminum
8FFU12 8PL-AFFU12	8"	7/12 to 12/12	6"	Galvanized Aluminum
6FFU18 6PL-AFFU18	6"	13/12 to 18/12	6"	Galvanized Aluminum
8FFU-18 8PL-AFFU18	8"	13/12 to 18/12	6"	Galvanized Aluminum
6FFU24 6PL-AFFU24	6"	19/12 to 24/12	6"	Galvanized Aluminum
8FFU24 8PL-AFFU24	8"	19/12 to 24/12	6"	Galvanized Aluminum

PART #	SIZE	A	B
6FT	6"	4" on 4 sides	12"
8FT	8"	4" on 4 sides	12"
10FT	10"	4" on 4 sides	12"

ADAPTER

PART # SIZE



6SWA 6"
8SWA 8"

Stove Pipe Adapter

- Included in a ceiling support assembly, roof support assembly, and tee assembly for easier installation of single-wall connector pipe



CHIMNEY KITS

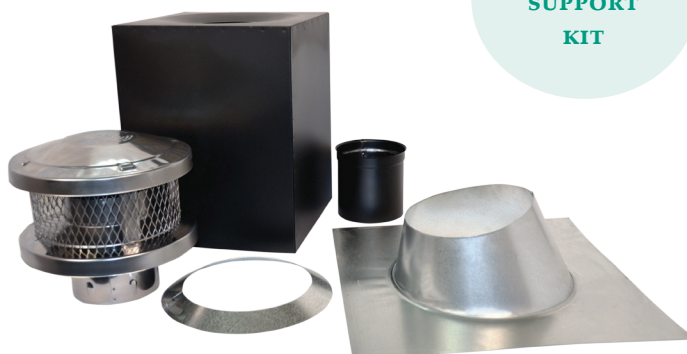
**CEILING
SUPPORT
KIT**
**PART #**

6HS-RKS

8HS-RKS

Kit Contains:

- 1 - Stainless Steel Rain Cap
- 1 - Flat to 6/12 pitch Flashing
- 1 - Storm Collar
- 1 - Ceiling Support
- 1 - Stove Pipe Adapter

**CATHEDRAL
SUPPORT
KIT**
**PART #**

6HS-RKRS

8HS-RKRS

Kit Contains:

- 1 - Stainless Steel Rain Cap
- 1 - Flat to 6/12 pitch Flashing
- 1 - Storm Collar
- 1 - Tall Roof Support (18")
- 1 - Stove Pipe Adapter

**THROUGH
THE WALL
KIT**
**PART #**

6HS-TWK

6HSS-TWK

8HS-TWK

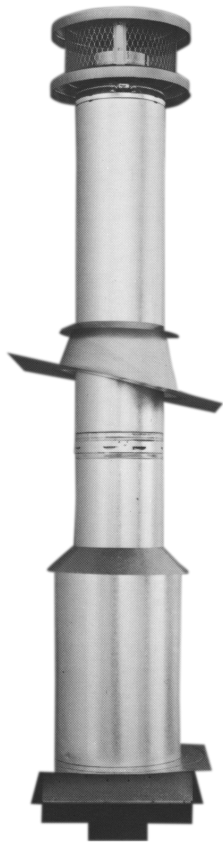
8HSS-TWK

Kit Contains:

- 1 - Stainless Steel Rain Cap
- 1 - Tee Assembly
- 1 - Flat to 6/12 Flashing
- 1 - Storm Collar
- 1 - Wall Support
- 1 - Painted Wall Thimble
- 3 - Support Bracket Assemblies

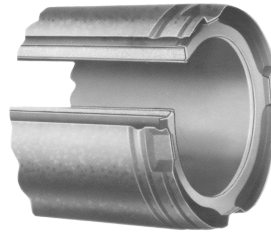


INSTALLATION INFORMATION



UL 103 HT 2100° F

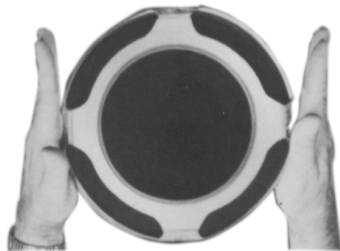
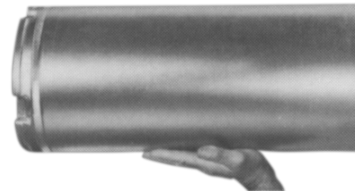
Models 6 and 8 HS feature a ceramic fiber refractory blanket to withstand intermittent temperatures up to 2100°F, as called for in UL 103 HT Standard



UL 103 1700° F

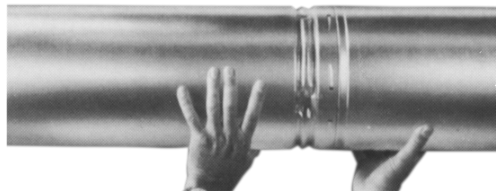
Model 10FB is a triple-wall, air-insulated chimney designed to withstand intermittent temperatures up to 1700°F, as called for in UL 103 Standard

LIGHTWEIGHT: Lightweight chimney makes for a fast, easy one-man installation. A minimum 2" airspace clearance to combustibles is required.



SMALL ODs: The small ODs let you install this compact prefabricated chimney in less space. The outside diameters are only 3" larger than inside diameters.

SNAP-LOCK DESIGN: The proven snap-lock coupling system goes together fast - and keeps this chimney rigid and trouble-free. No cement, screws, or straps are needed. The system is easy to connect in tight spots.





Direct Vent provides a complete line of components for all typical installations, both vertical and horizontal. The factory-assembled construction of Direct Vent is unique, having a galvanized steel outer wall and superior corrosion-resistant stainless steel inner wall. Direct Vent fits most existing start collars.



The inner-wall, factory-installed graphite gasket makes for easy, secure twist-lock installation. The 360° rotation allows elbows and straight pipe to rotate in either direction, while still maintaining the secure lock system.

Specifications and Dimensions

Usage	For venting direct vent gas appliances listed or certified for use with AmeriVent Direct Vent. For information on venting gas appliances having draft hoods and other appliances listed to be used with Type B Gas Vent, request our Type B Gas Vent Catalog. For information on venting unlisted gas appliances or appliances burning solid or liquid fuels, request our TLC Chimney Catalog.
Material	Inner Pipe: Type 430 Stainless Steel Outer Pipe: Galvanized Steel
Clearances	Refer to the appliance manufacturer's installation instructions for minimum clearances to combustibles.
Approved, Accepted, or Listed by	CSA, ITS, OMNI, UL

Pipe Size	Inner Thickness	Outer Thickness
Nominal 4" ID X 6 5/8" OD	.012"	.018"
Nominal 5" ID X 8" OD	.012"	.018"

Available Lengths: 7", 12", 24", 36", 48"



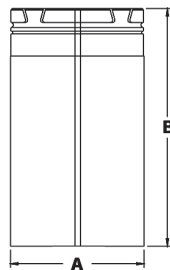
LENGTHS



Lengths

- Twist-lock joints offer fast installations
- Factory-installed inner gasket ensures a leak-free joint
- Features rugged, co-axial tube construction with a stainless steel inner wall and a galvanized steel outer wall, separated by two spacers
- 1 1/4" overlap at joints
- Available in a painted black finish

PART #	FINISH	LENGTH	SIZE	ID	OD
4D7 4D7B	Black	7"	4" X 6 5/8"	4"	6 5/8"
4D12 4D12B	Black	12"	4" X 6 5/8"	4"	6 5/8"
4D24 4D24B	Black	24"	4" X 6 5/8"	4"	6 5/8"
4D36 4D36B	Black	36"	4" X 6 5/8"	4"	6 5/8"
4D48 4D48B	Black	48"	4" X 6 5/8"	4"	6 5/8"
5D7 5D7B	Black	7"	5" X 8"	5"	8"
5D12 5D12B	Black	12"	5" X 8"	5"	8"
5D24 5D24B	Black	24"	5" X 8"	5"	8"
5D36 5D36B	Black	36"	5" X 8"	5"	8"
5D48 5D48B	Black	48"	5" X 8"	5"	8"



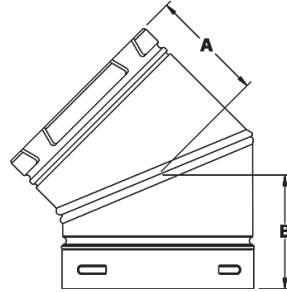
Adjustable Lengths

- Telescopes onto standard pipe sections for adjustments
- Includes stainless steel self-tapping screws
- Available in a painted black finish

PART #	FINISH	ADJ. LENGTH	SIZE	A	B
4D7A 4D7AB	Black	3" to 5"	4" X 6 5/8"	6 11/16"	7"
4D12A 4D12AB	Black	3" to 10"	4" X 6 5/8"	6 11/16"	12"
4D16A 4D16AB	Black	3" to 14"	4" X 6 5/8"	6 11/16"	16"
4D26A 4D26AB	Black	3" to 24"	4" X 6 5/8"	6 11/16"	26"
5D7A 5D7AB	Black	3" to 5"	5" X 8"	8 1/8"	7"
5D12A 5D12AB	Black	3" to 10"	5" X 8"	8 1/8"	12"
5D16A 5D16AB	Black	3" to 14"	5" X 8"	8 1/8"	16"
5D26A 5D26AB	Black	3" to 24"	5" X 8"	8 1/8"	26"



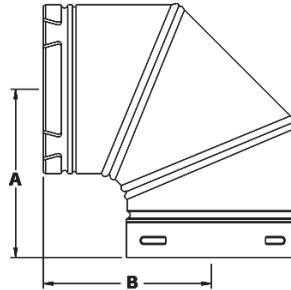
ELBOWS



PART #	FINISH	SIZE	A	B
4D45L 4D45LB	Black	4" X 6 5/8"	4 1/2"	4 1/2"
5D45L 5D45LB	Black	5" X 8"	4 3/4"	4 3/4"

45° Elbow

- Use with 45° fireplace adapters or in pairs to go around obstructions
- Add pipe sections between elbows for additional offset
- Available in a painted black finish



PART #	FINISH	SIZE	A	B
4D90L 4D90LB	Black	4" X 6 5/8"	6 11/16"	6 9/16"
5D90L 5D90LB	Black	5" X 8"	7 1/2"	7 5/32"

90° Elbow

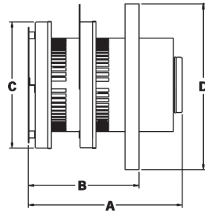
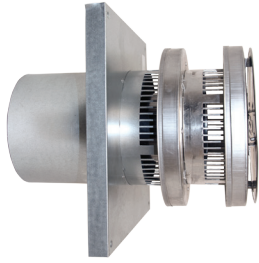
- Three-section design provides smooth, low resistant 90° offset
- Available in a painted black finish

45° OFFSET CHART

PIPE LENGTH	4" x 6 5/8"		5" x 8"	
	X - RUN	Y - RUN	X - RUN	Y - RUN
two 45's only	6"	14 1/8"	5 3/4"	15 3/16"
7"	9 3/16"	18 3/16"	9 1/2"	19"
12"	12 3/4"	21 3/4"	13"	22 1/2"
24"	21 1/4"	30 1/4"	21 1/2"	31"
36"	29 11/16"	38 11/16"	30"	39 1/2"
48"	38 3/16"	47 3/16"	38 1/2"	48"



RAIN CAPS



Round Horizontal Cap

- Use for horizontal venting applications
- Corrosion-resistant construction with stainless steel inner wall
- Low-restriction design improves efficiency and minimizes wall temperature

Round Horizontal Cap

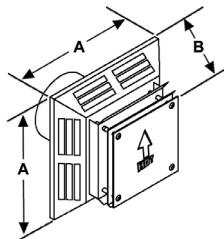
PART #	SIZE	A	B	C	D
4DHC	4" X 6 5/8"	11"	8"	9 1/4"	12"
5DHC	5" X 8"	13"	8 1/2"	11"	14 1/4"

Vinyl Siding Stand-off

4DVSK	4"
5DVSK	5"



Vinyl Siding Stand-off



Square Horizontal Cap

- For use with horizontal, through-the-wall venting systems
- Sleek, low profile design
- Vinyl Siding Shield is for use ONLY with Square Horizontal Cap - Sold separately

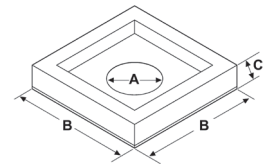
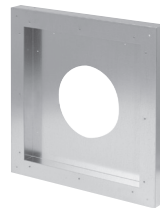
PART #	SIZE	A	B	C
--------	------	---	---	---

Square Horizontal Cap

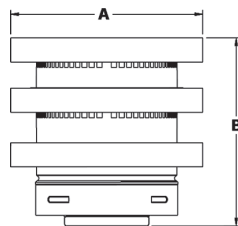
4DHCS	4" X 6 5/8"	13 1/2"	7"	---
5DHCS	5" X 8"	16"	7"	---

Vinyl Siding Shield

4DHVS	4" X 6 5/8"	6 5/8"	17 3/8"	2"
5DHVS	5" X 8"	8 1/4"	19 7/8"	2"



Vinyl Siding Shield



Vertical Cap

- Use for vertical venting applications
- Corrosion resistant construction with stainless steel inner wall
- Low-restriction design improves efficiency

PART #	SIZE	A	B
--------	------	---	---

4DVC	4" X 6 5/8"	9 1/4"	9"
5DVC	5" X 8"	11 1/4"	9 1/2"



COLLINEARS

PART # SIZE



Collinear Cap

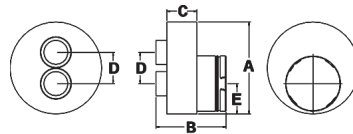
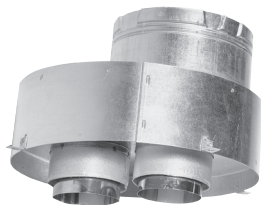
DVCC33	3" / 3"
DVCC43	4" / 3"

35ft Liner Kit

DVIK33	3" / 3"
DVIK43	4" / 3"

Integrated Collinear Cap and Direct Vent Liner Kit

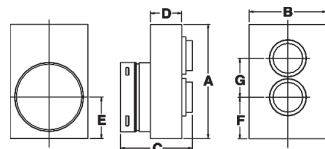
- No adapter required
- 16" x 16" flashing base



PART #	SIZE	A	B	C	D - DIA	E - DIA
4DCAT33	4" X 6 5/8"	11"	9"	4"	3"	3"
4DCAT43	4" X 6 5/8"	11"	9"	4"	3"	4"

Collinear Connectors: Top Kit

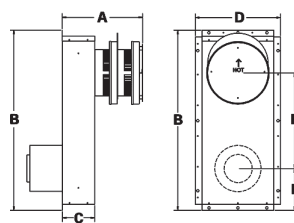
- Use at top of existing chimney to convert Collinear tubes to Co-axial AmeriVent Direct Vent
- Flashing is included



PART #	SIZE	A	B	C	D	E-DIA	F-DIA
4DCAB33	4" X 6 5/8"	11"	7 1/2"	7 1/2"	3"	3"	3"
4DCAB43	4" X 6 5/8"	11"	7 1/2"	7 1/2"	3"	3"	4"

Collinear Connectors: Appliance Adapter

- Use at appliance for connecting from Co-axial start collars to a pair of Collinear tubes passing through existing chimneys



PART #	SIZE	A	B	C	D	E	F
4D14S	4" X 6 5/8"	12"	26 1/2"	4 3/4"	12 1/2"	14"	6 1/4"
4D36S	4" X 6 5/8"	12"	48 1/2"	4 3/4"	12 1/2"	36"	6 1/4"
5D14S	5" X 8"	14 1/2"	26 1/2"	6 1/2"	14 1/4"	14"	6 1/4"
5D36S	5" X 8"	14 1/2"	48"	6 1/2"	14 1/4"	36"	6 1/4"

Snorkel Cap

- Use for horizontal vent installations that require a vertical rise on the exterior of the building
- Corrosion-resistant construction with stainless steel inner wall
- Low-restriction design improves efficiency and minimizes wall temperature



WIND SCREEN / COVER

PART

A

B

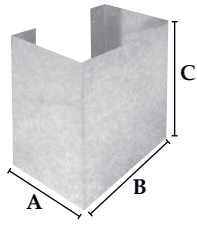
C

4DHWS

9"

13 ¼"

14 ¾"



Wind Screen / Cover

- Wind screen for Horizontal Cap; works for 4" or 5" caps
- Galvanized steel can be painted to match home exterior
- Non-UL listed

WALL BAND

PART

A

B

C

4DWS

6 ⅝"

15 ½"

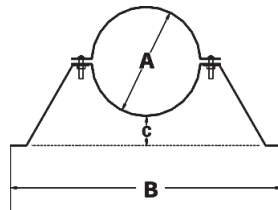
2"

5DWS

8"

18"

2"



Wall Band

- Provides lateral support for vent and offsets, while maintaining clearance from the wall

CEILING SUPPORT

PART

A

B

C

D

4DRSB

14"

11 ⅜"

15 ⅜"

6 ¾"

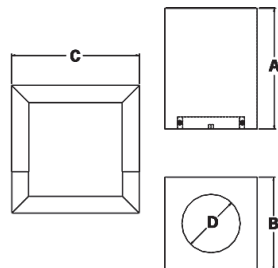
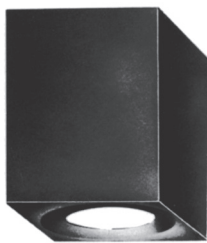
5DRSB

14"

11 ⅜"

15 ⅜"

8 ⅛"



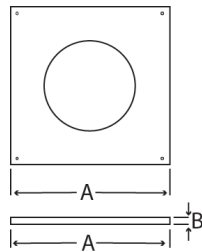
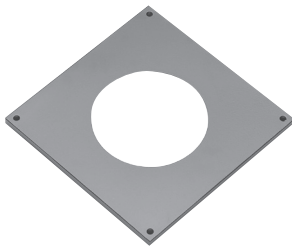
Cathedral Ceiling Support

- Use as support and firestop in cathedral ceiling installations
- Fits from flat to 12/12 pitch ceilings
- Use the included trim plate to conceal rough opening
- Painted Black



TRIM COLLAR

PART #	A	B
4DFPB	12"	1/2"
5DFPB	14 1/4"	1/2"

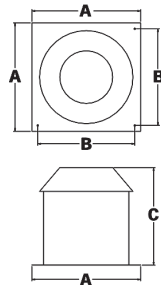


Trim Collar

- Use as a decorative cover for the Firestop Support Plate or Wall Thimble
- Black painted surface for interior wall

SHIELD

PART #	A	B	C
4DAIS12	14"	12 1/4"	12"
5DAIS12	14"	12 1/4"	12"
4DAIS36	14"	12 1/4"	36"
5DAIS36	14"	12 1/4"	36"

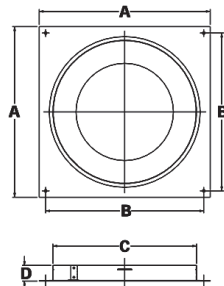
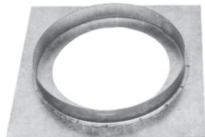


Attic Insulation Shield

- Use on single-story or on top story of multi-story building
- Use to keep insulation from making direct contact with vent pipe

FIRESTOP

PART #	A	B	C	D
4DFSP	12"	11"	10"	1"
5DFSP	14"	13"	11"	1"

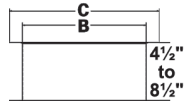
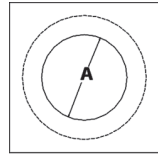
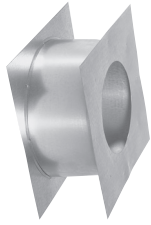


Firestop Support Plate

- Provides vertical support for vent and offsets, while maintaining clearance from the wall and providing a firestop
- Can be used with the black painted Face Plate for the interior ceiling.



WALL THIMBLE

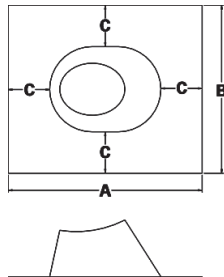
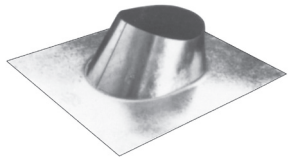


PART #	A	B	C
4DWT	6 3/4"	10"	11 11/16"
5DWT	8 1/4"	11 1/2"	14"

Wall Thimble

- Provides clearance and firestopping for through-the-wall installations
- Can be used with a black painted Face Plate for the interior wall
- Adjustable from 4 1/2" to 8 1/2"

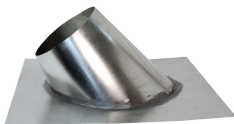
FLASHINGS



PART #	A	B	C
4DF	18 3/4"	16"	4"
5DF	20"	17 3/4"	4"

Standard Flashing

- Fits flat to 5/12 pitch roofs
- Double-seamed construction for protection from leakage

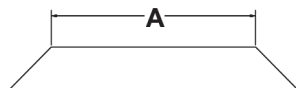


PART #	A	B	C
4DF12	22 1/2"	17"	4"
5DF12	21 3/4"	21 3/4"	4"

Steep Pitch Flashing

- Fits 6/12 to 12/12 pitch roofs
- Double seamed construction for protection from leakage

STORM COLLAR



PART #	A
4DSC	6 5/8"
5DSC	8"

Storm Collar

- Used with a flashing and mastic to seal to vent pipe, the storm collar provides extra weather protection



ADAPTERS

PART # DESCRIPTION



4DSC-V	Valor Adapter
4DSC-K	Kingsman Adapter
5DSC-N	Napoleon Adapter
4DSCB-N1	Napoleon Adapter - Black
4DSC-N2	Napoleon Adapter - Mill

Valor Adapter

- Engineered for Valor fireplaces, requiring 4" x 6⁵/₈" direct vent venting



Kingsman Adapter

- For use specifically with 4" x 7" Kingsman appliances



Napoleon Adapter Black

Napoleon Adapter Mill

Napoleon Adapter

- For use specifically with Napoleon and Continental fireplaces and stoves

MISCELLANEOUS

PART

AVD-PTU



Black Touch-Up Paint

- Description



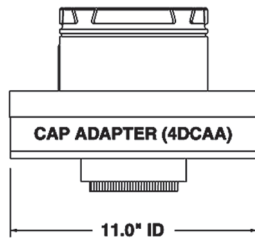
CHIMNEY CONVERSION KITS

PART # DESCRIPTION AND COMPONENTS

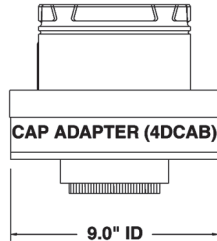
See Direct Vent Installation Illustrations



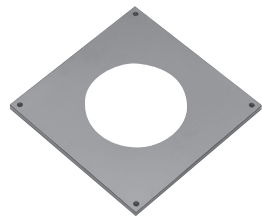
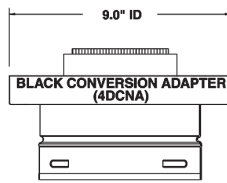
Cap Adapter (4DCAA)



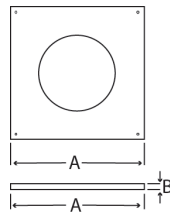
Cap Adapter (4DCAB)



Black Conversion Adapter (4DCNA)



Trim Collar (4DFPB)



4DRCKA Class A: 8" Metal Chimney Conversion Kit

Used when converting an existing 8" factory-built chimney to a direct vent appliance.

Includes: Conversion Adapter (4DCNA)

Cap Adapter - Large (4DCAA)

Uses a UL-listed 4" aluminum flex vent pipe and 7" aluminum flex vent pipe (sold separately)

PART # DESCRIPTION AND COMPONENTS

4DRCKM Masonry Chimney Conversion Kit

Used when converting an existing masonry chimney to a direct vent appliance.

Includes: Conversion Adapter (4DCNA)

Cap Adapter - Small (4DCAB)

Trim Collar (DFPB)

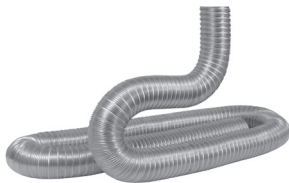
Flashing 17" x 17" (117413)

Uses a UL-listed 4" flex vent pipe and a 7" flex vent pipe (sold separately)

FLEXIBLE VENT PIPE KIT

PART # SIZE USED WITH

3ALK-35	3" X 35'	Collinear Vent Systems
4ALK-35	4" X 35'	Collinear & Co-Axial Vent Systems
7ALK-25K	7" X 25'	Co-Axial Vent Systems, includes pipe and fittings
7ALK-35K	7" X 35'	Co-Axial Vent Systems, includes pipe and fittings



Flexible Vent Pipe Kit

- Flexible 2-ply aluminum vent used for collinear and co-axial vent systems



TERMINATION KITS

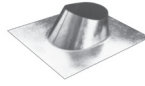
Vertical Termination Kit



vertical cap



storm collar



standard
flashing

PART # DESCRIPTION & COMPONENTS

4DVTK Vertical Termination Kit

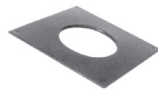
Includes: Vertical Cap (4DVC)
Storm Collar (4DSC)
Standard Flashing (4DF)

Fits flat to 5/12 roof pitch

Horizontal Termination Kit #1



black 90° elbow



black trim collar



round
horizontal cap



24"
black length



12" adjustable
black length

PART # DESCRIPTION & COMPONENTS

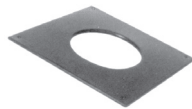
4DHTK1 Horizontal Termination Kit #1

Includes 90° Elbow - Black (4D90LB)
Face Plate (4DFPB)
Round Horizontal Cap (4DHC)
24" Chimney Length - Black (4D2B)
12" Chimney Length Adj. - Black (4D12AB)

Horizontal Termination Kit #2



black 90° elbow



black trim collar



round
horizontal cap

PART # DESCRIPTION & COMPONENTS

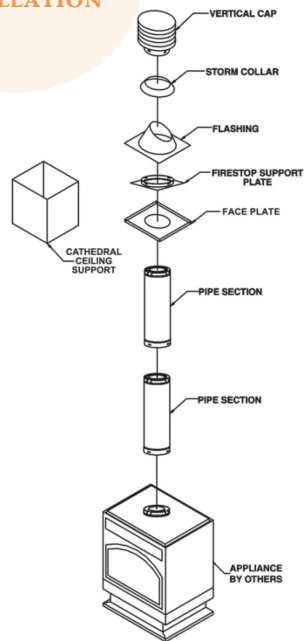
4DHTK2 Horizontal Termination Kit #2

Includes 90° Elbow - Black (4D90LB)
Face Plate (4DFPB)
Round Horizontal Cap (4DHC)

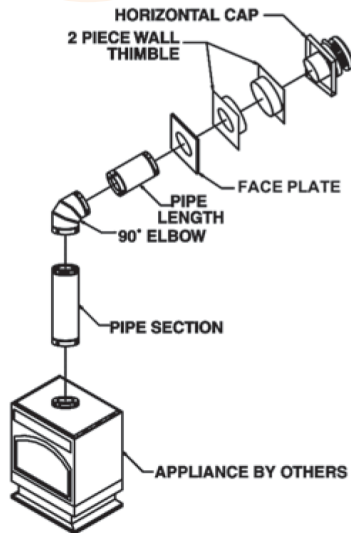


TYPICAL AMERIVENT DIRECT VENT INSTALLATIONS

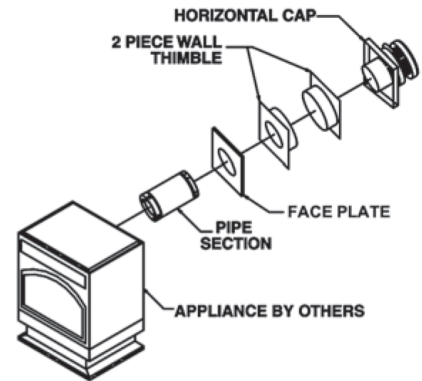
VERTICAL INSTALLATION



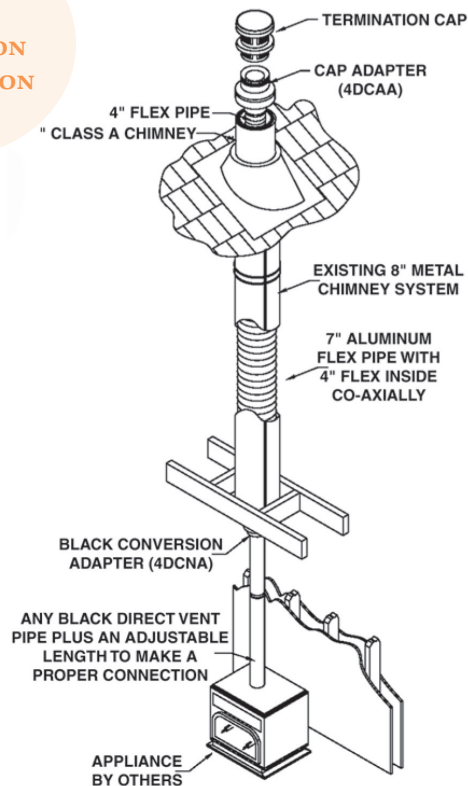
VERTICAL TO HORIZONTAL INSTALLATION



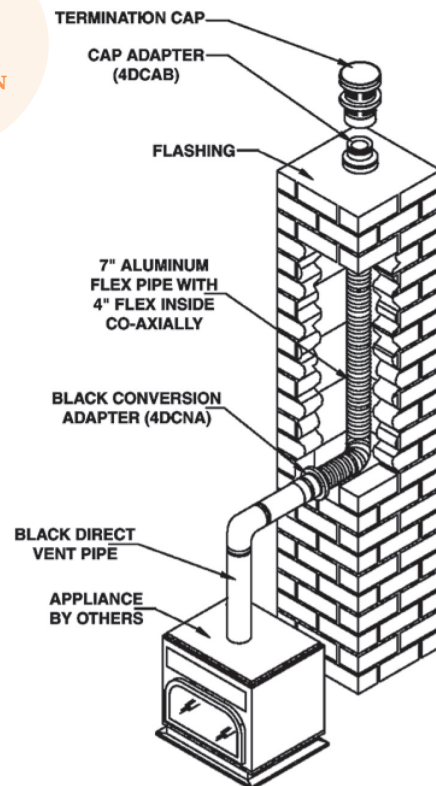
REAR EXIT HORIZONTAL INSTALLATION



CLASS A CONVERSION INSTALLATION



MASONRY CONVERSION INSTALLATION





Ultimate Pellet Pipe is a premiere venting system designed with the installer in mind. Fast, sealed and secure assembly coupled with laser-welded seams and smooth joint connections create a pipe system that is sleek and beautiful. No need for silicone sealant with Ultimate Pellet Pipe. The gasket design seals the pipe tight, eliminating the need for silicone at the seams.



Offer your customers a superior pellet venting solution, Ultimate Pellet Pipe features:



- Easy to assemble
- Silicone gasket sealed
- Laser-welded seams
- Smooth joint connections
- 360° Lock-Tab secure rotation
- Lock-Tab allows for easy dismantling for inspection and cleaning
- 300 Series stainless steel inner, galvalume outer
- Complete offering of painted pipe, fittings, and components
- 1" Clearance to combustibles



The Ultimate Hearth Solution for Pellet Stove Venting

Stainless Steel and Galvalume Construction

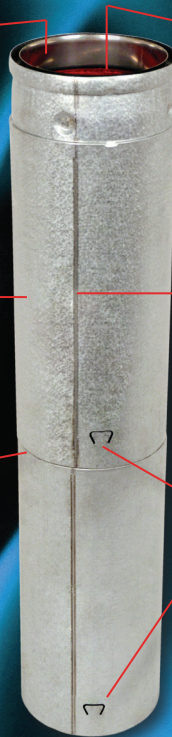
The Ultimate Pellet Pipe's inner pipe is made of 300 series stainless steel which provides exceptional corrosion resistance. The outer pipe is manufactured with galvalume steel, for superior protection against harsh outdoor elements.

High Temperature Paint or Galvalume Exterior

Ultimate Pellet Pipe is available finished in a matte black or unpainted galvalume. Our high temperature matte black paint will withstand temperatures up to 1200° F and look beautiful for years.

Smooth Joint Connections

Our unique end forming process creates a connection joint that provides a smooth, clean profile. The gasket within the pipe seals the connection tight, providing a superior, leak-free connection.



Gasket Technology

Say goodbye to messy silicone to seal those joints. Ultimate Pellet Pipe's superior silicone gasket technology seals the system and eliminates fly ash from escaping. Easy to assemble. Easy to take apart for inspection and cleaning. Ultimate Pellet Pipe's silicone gasket technology has been field proven for more than 15 years.

Laser-Welded Seams

Both the inner and outer pipes are laser-welded, creating a smooth seam and consistently round pipe. No seam, tight seal, no problem!

Lock-Tab™ Security

Ultimate Pellet Pipe features a female end Lock-Tab system. When engaged, the Lock-Tab will securely hold pipe in place, allowing 360° rotation. This unique feature is easy to engage and disengage. Fast, easy, and secure!

Specifications and Dimensions

Model UPP has been tested and listed by Underwriters Laboratories Inc. in accordance with:

US Standards	UL641: Type L low temperature venting systems
	UL103 (applicable portions of): The standard for residential type and building heating appliance chimneys
Canadian Standards	ULC-S609: Low temperature type L vents
	ULC/ORD-C441: Other recognized document for pellet vents

US Standard for Chimneys, Fireplaces, Vents and Solid Fuel Burning Appliances, NFPA-211

Canadian Installation Code for Solid Fuel Burning Appliances and Equipment, CSA-B365

The UPP system is rated for flue temperatures up to 570°F/ 300°C and is backed by our Smart Choice Warranty



LENGTHS



Lengths

- Available in lengths of 6", 12", 18", 24", 36" and 60"
- 1 3/4" overlap at joints
- Painted black or unpainted

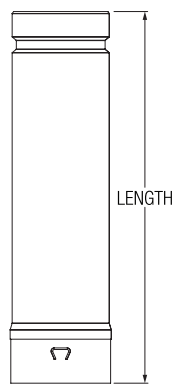
PART #	PRODUCT CODE	FINISH	LENGTH
--------	--------------	--------	--------

3" Diameter

3UPP-6	823000	Black	6"
3UPP-6B	823000		
3UPP-12	823001	Black	12"
3UPP-12B	823001B		
3UPP-18	823002	Black	18"
3UPP-18B	823002B		
3UPP-24	823003	Black	24"
3UPP-24B	823003B		
3UPP-36	823004	Black	36"
3UPP-36B	823004B		
3UPP-60	823005	Black	60"
3UPP-60B	832005B		

4" Diameter

4UPP-6	824000	Black	6"
4UPP-6B	824000B		
4UPP-12	824001	Black	12"
4UPP-12B	824001B		
4UPP-18	824002	Black	18"
4UPP-18B	824002B		
4UPP-24	824003	Black	24"
4UPP-24B	824003B		
4UPP-36	824004	Black	36"
4UPP-36B	824004B		
4UPP-60	824005	Black	60"
4UPP-60B	824005B		



Adjustable Lengths

- Eliminates the need to field cut
- Adjustable up to 9 1/2" by simply sliding over a UPP fixed length
- Features a factory installed O-ring
- Painted black or unpainted

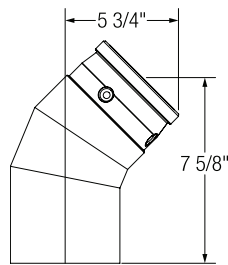
PART #	PRODUCT CODE	FINISH	LENGTH
--------	--------------	--------	--------

3" Diameter

3UPP-12A	823007	Black	Adj. 12"
3UPP-12AB	823007B		

4" Diameter

4UPP-12A	824007	Black	Adj. 12"
4UPP-12AB	824007B		


ELBOWS

45° Elbow

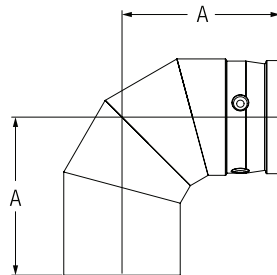
- Used as an offset around an obstruction
- Painted black or unpainted
- Can be used as a termination when accompanied by a Screen Cap

PART # PRODUCT CODE FINISH
3" Diameter

3UPP-45E	823008	
3UPP-45EB	823008B	Black

4" Diameter

4UPP-45E	824008	
4UPP-45EB	824008B	Black


90° Elbow

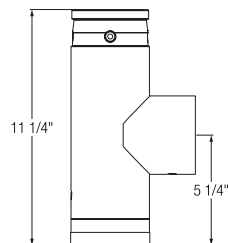
- Used as an offset around an obstruction
- Painted black or unpainted

PART # PRODUCT CODE FINISH
3" Diameter

3UPP-90E	823006	
3UPP-90EB	823006B	Black

4" Diameter

4UPP-90E	824006	
4UPP-90EB	824006B	Black

TEE COMPONENTS

Tee with Tee Cap

- Used to transition from horizontal to vertical orientation
- Provides easy access for inspection and maintenance
- Includes Tee Cap
- Painted black or unpainted

PART # PRODUCT CODE FINISH DESCRIPTION
3" Diameter

3UPP-T	823009		Tee w/Tee Cap
3UPP-TB	823009B	Black	
3UPP-TA	823022		Tee w/Tee Cap & Appliance Adapter
3UPP-TAB	823022B	Black	

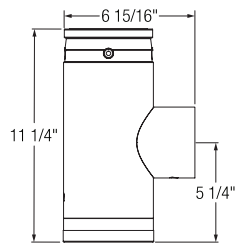
4" Diameter

4UPP-T	824009		Tee w/Tee Cap
4UPP-TB	824009B	Black	
4UPP-TA	824022		Tee w/Tee Cap & Appliance Adapter
4UPP-TAB	824022B	Black	



TEE COMPONENTS (CONTINUED)

PART # PRODUCT CODE FINISH

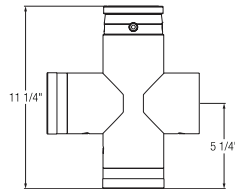


3" Diameter

3UPP-IT	823023	
3UPP-ITB	823023	Black

Increaser Tee with Tee Cap

- Used to transition from horizontal to vertical orientation
- Converts a 3" appliance to a 4" UPP system
- Provides easy access for inspection and maintenance
- Includes Tee Cap
- Painted black or unpainted



PART # PRODUCT CODE FINISH

3" Diameter

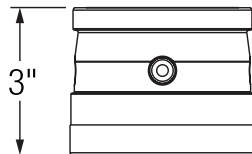
3UPP-DT	823018	
3UPP-DTB	823018B	Black

4" Diameter

4UPP-DT	824018	
4UPP-DTB	824018B	Black

Double Tee with Tee Caps

- Used to transition from horizontal to vertical orientation
- Allows horizontal or vertical cleaning access and inspection
- Includes two Tee Caps
- Painted black or unpainted



PART # PRODUCT CODE FINISH

3" Diameter

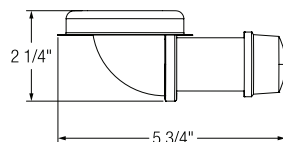
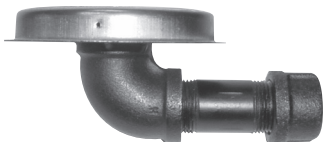
3UPP-TC	823016	
3UPP-TCB	823016B	Black

4" Diameter

4UPP-TC	824016	
4UPP-TCB	824016B	Black

Tee Cap

- Use as a replacement



PART # PRODUCT CODE

3" Diameter

3UPP-VCC	823024
----------	--------

4" Diameter

4UPP-VCC	824024
----------	--------

Vacuum Clean-Out Cap

- Replaces the existing Tee Cap
- Used to clean the vent with no mess



RAIN CAPS

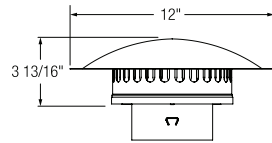
PART # PRODUCT CODE

3" Diameter

3UPP-VC 823014

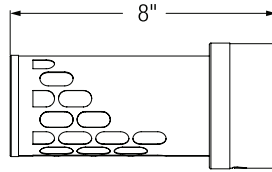
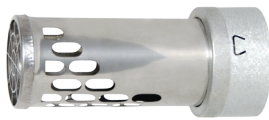
4" Diameter

4UPP-VC 824014



Vertical Termination Cap

- Vent termination for a vertical, through-the-roof installation
- Designed to prevent rain and snow from entering the vent



PART # PRODUCT CODE

3" Diameter

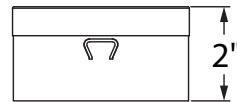
3UPP-HC 823020

4" Diameter

4UPP-HC 824020

Horizontal Termination

- Vent termination for a horizontal through-the-wall installation



PART # PRODUCT CODE

3" Diameter

3UPP-45T 823034

4" Diameter

4UPP-45T 824034

Screen Cap

- Must be used in conjunction with a 45° Elbow to serve as a horizontal termination

WALL BAND

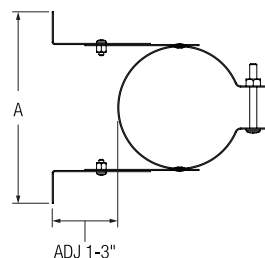
PART # PRODUCT CODE

3" Diameter

3UPP-WB 823019

4" Diameter

4UPP-WB 824019



Adjustable Wall Band

- Stabilize and support a vertical or horizontal run of pipe
- Clearance distance adjustable from 1" to 3"



CEILING SUPPORT

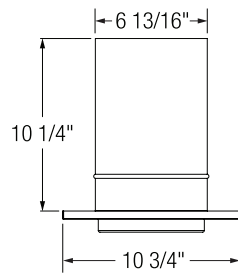
PART #	PRODUCT CODE	FINISH
--------	--------------	--------

3" Diameter

3UPP-CSB	823012	Black
----------	--------	-------

4" Diameter

4UPP-CSB	824012	Black
----------	--------	-------



Ceiling Support

- Used to support UPP from below the ceiling joist
- Maintains 1" clearance to combustibles
- Trim plate is painted black

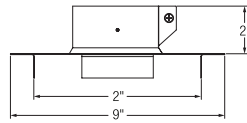
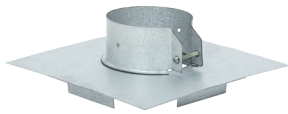
PART #	PRODUCT CODE	FINISH
--------	--------------	--------

3" Diameter

3UPP-FCS	823047	
----------	--------	--

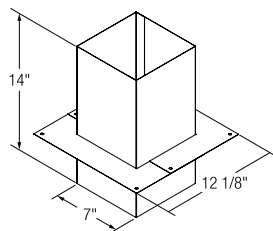
4" Diameter

4UPP-FCS	824047	
----------	--------	--



Ceiling Support / Firestop

- Used to support UPP from above the ceiling joist
- Maintains 1" clearance to combustibles



Cathedral Ceiling Support

- Used to support UPP in a cathedral or sloped ceiling installation
- Maintains clearance to combustibles
- Painted black

PART #	PRODUCT CODE	FINISH
--------	--------------	--------

3" Diameter

3UPP-CCS	823031	Black
----------	--------	-------

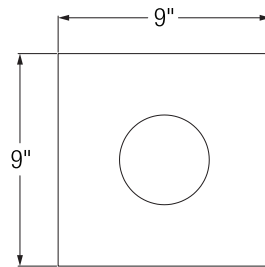
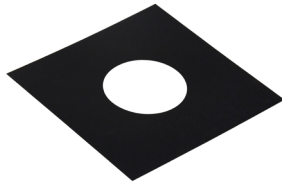
4" Diameter

4UPP-CCS	824031	Black
----------	--------	-------



TRIM COLLAR

PART # PRODUCT CODE FINISH



3" Diameter

3UPP-TP 823032 Black

4" Diameter

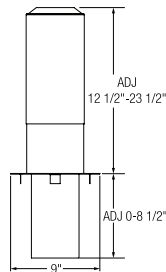
4UPP-TP 824032 Black

Trim Collar

- Finishing plate used at the ceiling level or on a sidewall
- Maintains clearance to combustibles
- Painted black

SHIELDS

PART # PRODUCT CODE



3" Diameter

3UPP-AIS 823010

4" Diameter

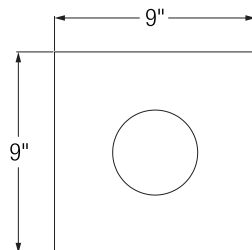
4UPP-AIS 824010

Attic Insulation Shield

- Used in the attic to guard against the hazard of blown-in or blanket Insulation
- Maintains a 1" clearance to combustibles
- Adjust up to 23 1/2"
- Includes a drop-down joist shield to protect the joist area

FIRESTOP

PART # PRODUCT CODE



3" Diameter

3UPP-FS 823011

4" Diameter

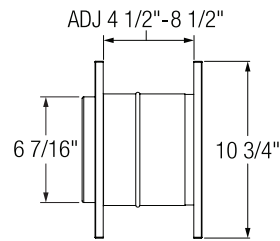
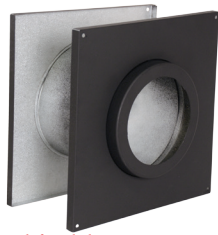
4UPP-FS 824011

Firestop

- Used to protect combustible materials where UPP passes through a ceiling
- Can also be used at the soffit level in an exterior installation



WALL THIMBLE



Wall Thimble

- Used in a combustible through-the-wall installation
- Maintains clearance to combustibles
- Adjustable for 4 1/2" to 8 1/2" thick walls
- Painted black

PART #	PRODUCT CODE	FINISH
--------	--------------	--------

3" Diameter

3UPP-WTB	823013	Black
----------	--------	-------

4" Diameter

4UPP-WTB	824013	Black
----------	--------	-------

FLASHINGS

PART #	PRODUCT CODE	PITCH
--------	--------------	-------

3" Diameter

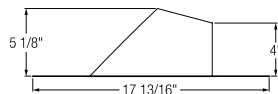
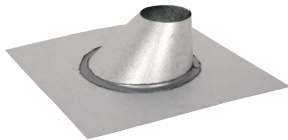
3UPP-F6	823035	1/12 to 6/12
---------	--------	--------------

3UPP-F12	823036	6/12 to 12/12
----------	--------	---------------

4" Diameter

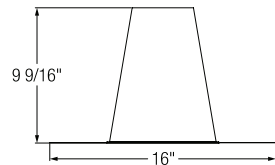
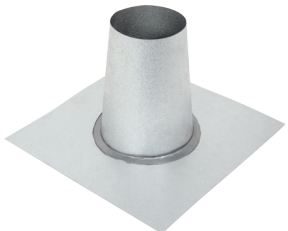
4UPP-F6	824035	1/12 to 6/12
---------	--------	--------------

4UPP-F12	824036	6/12 to 12/12
----------	--------	---------------



Adjustable Flashing

- Weatherproof the installation through a pitched roof
- For pitches of 0/12 to 6/12 and pitches of 6/12 to 12/12



Tall Cone Flashing

- Weatherproof the installation through a flat roof

PART #	PRODUCT CODE
--------	--------------

3" Diameter

3UPP-TF	823015
---------	--------

4" Diameter

4UPP-TF	824015
---------	--------

STORM COLLAR

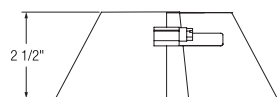
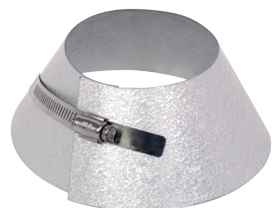
PART #	PRODUCT CODE
--------	--------------

3" Diameter

3UPP-SC	823021
---------	--------

4" Diameter

4UPP-SC	824021
---------	--------



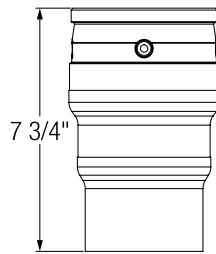
Storm Collar

- Maintain a weather tight seal between the vent and the roof flashing
- Silicone must be applied (not included)



ADAPTERS

PART # PRODUCT CODE FINISH

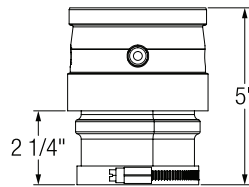


3" to 4" Increaser

- Transition from a 3" to a 4" UPP
- Painted black or unpainted

3" Diameter

3UPP-I4	823025	
3UPP-I4B	823025B	Black



Appliance Adapter

- Attach to the appliance for connection to UPP

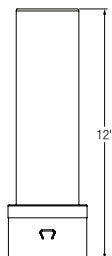
PART # PRODUCT CODE FINISH

3" Diameter

3UPP-AA	823017	
3UPP-AAB	823017B	Black

4" Diameter

4UPP-AA	824017	
4UPP-AAB	824017B	Black



Masonry Adapter

- Adapt UPP to a masonry chimney

PART # PRODUCT CODE

3" Diameter

3UPP-MA	823033
---------	--------

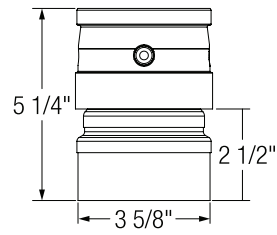
4" Diameter

4UPP-MA	824033
---------	--------



ADAPTERS (CONTINUED)

PART # PRODUCT CODE

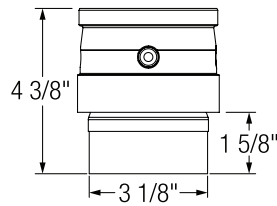


Harman Pipe Adapter - Outside

- Harman appliance outlet for easy pipe connection

3" Diameter

3UPP-HAA1	823028
-----------	--------



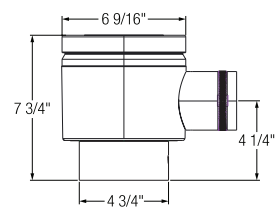
Harman Pipe Adapter - Inside

- Attaches a Harman appliance to UPP

PART # PRODUCT CODE

3" Diameter

3UPP-HAA2	823029
-----------	--------



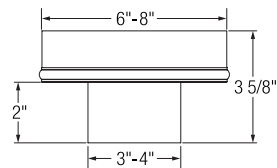
DT Adapter

- Transition from UPP pipe to Direct-Temp direct vent system

PART # PRODUCT CODE

4" Diameter

4UPP-DTA	824037
----------	--------



Chimney Adapter

- Transition from UPP to a Type A insulated chimney

PART # PRODUCT CODE SIZE

3" Diameter

3UPP-CA6	823038	6" x 1"
3UPP-CA8	823039	8" x 1"

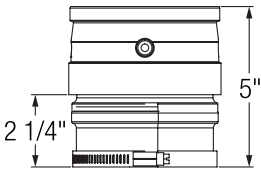
4" Diameter

4UPP-CA6	824038	6" x 1"
4UPP-CA8	824039	8" x 1"



ADAPTERS (CONTINUED)

PART # PRODUCT CODE

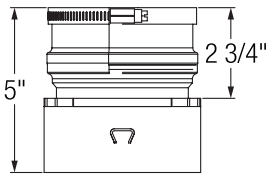


4" Diameter

4UPP-FC 824026

Flex Connector

- Transition from a flexible stainless steel liner to UPP



PART # PRODUCT CODE

4" Diameter

4UPP-FCR 824027

Reverse Flex Connector

- Transition from UPP to a flexible stainless steel liner

MISCELLANEOUS

PART # SIZE

7001 SIL Single Use Lubricant Packet

7001 SIL-5 5oz. Lubricant Tube

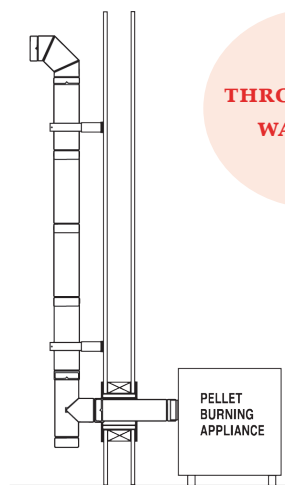


Lubricant

- To lubricate UPP gaskets for easier assembly and dismanteling



PELLET PIPE KITS



**THROUGH THE
WALL KIT**

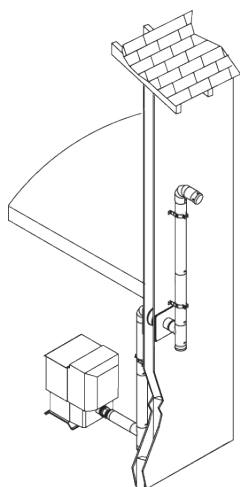
PART #	PRODUCT CODE	SIZE
3UPP-TWK	823044	3" Kit
4UPP-TWK	824044	4" Kit

3" Kit Contains:

- 1 - Horizontal Termination (3")
- 1 - 90° Elbow (3")
- 2 - Adjustable Wall Band (3")
- 1 - Appliance Adapter (3")
- 1 - Wall Thimble (3")
- 1 - Tee with Tee Cap (3")
- 5 - 12" Pipe Length (3")

4" Kit Contains:

- 1 - Horizontal Termination (4")
- 1 - 90° Elbow (4")
- 2 - Adjustable Wall Band (4")
- 1 - Appliance Adapter (3")
- 1 - Appliance Adapter (4")
- 1 - 3" to 4" Increaser
- 1 - Wall Thimble (4")
- 1 - Tee with Tee Cap (4")
- 5 - 12" Pipe Length (4")

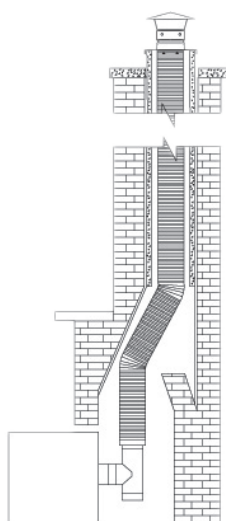


**BASEMENT
KIT**

PART #	PRODUCT CODE	SIZE
4UPP-BK	824045	4" Kit

4" Kit Contains:

- 1 - Horizontal Termination (4")
- 1 - Appliance Adapter (3")
- 1 - Appliance Adapter (4")
- 1 - 3" to 4" Increaser
- 1 - Wall Thimble (4")
- 2 - Tee with Tee Cap (4")
- 3 - Adjustable Wall Band (4")
- 2 - 90° Elbow (4")
- 2 - 12" Pipe Length (4")
- 4 - 24" Pipe Length (4")



**INSERT
FLEX KIT**

PART #	PRODUCT CODE	SIZE
4UPP-IK25	824042	25' Kit
4UPP-IK35	824043	35' Kit

25' Kit Contains:

- 1 - 25' of 4" Stainless Flex
- 1 - Increaser Tee w/Tee Cap (4")
- 1 - Reverse Flex Connector (4")
- 1 - 4" Termination Cap
- 1 - 4" Flex Flashing Connector
- 1 - 4" Flashing/Support
- 1 - Appliance Adapter 3"
- 1 - Silicone Sealant

35' Kit Contains:

- 1 - 35' of 4" Stainless Flex
- 1 - Increaser Tee with Tee Cap (4")
- 1 - Reverse Flex Connector (4")
- 1 - 4" Termination Cap
- 1 - 4" Flex Flashing Connector
- 1 - 4" Flashing/Support
- 1 - Appliance Adapter 3"
- 1 - Silicone Sealant



The AmeriVent Model DCC Double-Wall Stove Pipe is designed for use with AmeriVent chimney systems. Model DCC is UL-listed for minimum airspace clearance to combustibles of 6" to the rear and side walls, 8" to ceilings.

Construction Features

- UL-listed for 1000° continuous operation
- Stainless steel inner liner
- Air-insulated, double-wall design
- Painted Black
- Easy to inspect
- Easy to install
- Screw joint assembly
- Drip-free design to prevent creosote leakage
- Components individually wrapped in plastic sleeves

Note: A single-wall adapter is required to attach Double-Wall Chimney (DCC) to Model HS/HSS/TD Chimney





MODEL DCC DOUBLE WALL STOVE PIPE

CHIMNEY LENGTHS



Chimney Length

- Stainless steel inner liners
- Easy to install and disassemble; screw-joint assembly
- 1 ¼" overlap at joints

PART #	PRODUCT CODE	LENGTH	I.D.	O.D.
--------	--------------	--------	------	------

6" Diameter

6DCC-12-BK	887000	12"	6"	7"
6DCC-18-BK	887032	18"	6"	7"
6DCC-24-BK	887003	24"	6"	7"
6DCC-36-BK	887034	36"	6"	7"
6DCC-48-BK	887036	48"	6"	7"

8" Diameter

8DCC-12-BK	887016	12"	8"	9"
8DCC-18-BK	887046	18"	8"	9"
8DCC-24-BK	887019	24"	8"	9"
8DCC-36-BK	887048	36"	8"	9"
8DCC-48-BK	887050	48"		



Adjustable Chimney Length

- 6" length section slips over pipe section for adjustments from 2 ½" to 5"
- 18" length section slips over pipe section for adjustments from 3" to 15"

PART #	PRODUCT CODE	LENGTH	I.D.	O.D.
--------	--------------	--------	------	------

6" Diameter

6DCC-6A-BK	887006	6"	6"	7"
6DCC-18A-BK	887001	18"	6"	7"

8" Diameter

8DCC-6A-BK	887021	6"	8"	9"
8DCC-18A-BK	887017	18"	8"	9"



Two-Piece Telescoping Section

- Telescopes between stove and supports for adjustments from 3 ½' to 5 ½'

PART #	PRODUCT CODE	LENGTH	I.D.	O.D.
--------	--------------	--------	------	------

6" Diameter

6DCC-TS5-BK	887013	3 ½' to 5 ½'	6"	7"
-------------	--------	--------------	----	----

8" Diameter

8DCC-TS5-BK	887029	3 ½' to 5 ½'	8"	9"
-------------	--------	--------------	----	----



ELBOWS



45° Elbow

- Fixed 45° Elbow is used to offset connector pipe toward the insulated chimney system

PART #	PRODUCT CODE	A	B
--------	--------------	---	---

6" Diameter

6DCC-45-BK	887004	9 ¼"	10"
------------	--------	------	-----

8" Diameter

8DCC-45-BK	887020	11 ¼"	12"
------------	--------	-------	-----



90° Elbow

- Fixed 90° Elbow is used to offset connector pipe toward the insulated chimney system

PART #	PRODUCT CODE	A	B
--------	--------------	---	---

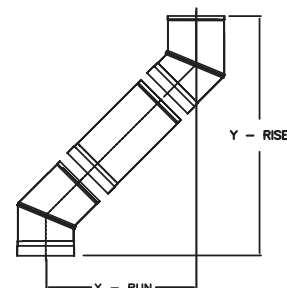
6" Diameter

6DCC-90-BK	887008	9 ¼"	10"
------------	--------	------	-----

8" Diameter

8DCC-90-BK	887023	11 ¼"	12"
------------	--------	-------	-----

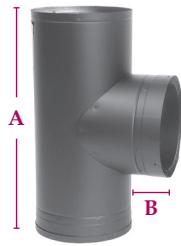
	PIPE LENGTH	X - RUN	Y - RUN
6" Diameter DCC (2) 45° Elbows	0"	5 ½"	13 ¼"
	12"	13 ⅛"	20 ⅜"
	18"	17 ⅝"	25 ⅜"
	24"	21 ½"	29 ⅝"
	36"	30"	37 ¾"
	48"	38 ½"	46 ¼"
7" Diameter DCC (2) 45° Elbows	0"	6 ⅜"	14 ⅝"
	12"	13 ¾"	22 ⅞"
	18"	18"	26 ¾"
	24"	22 ¼"	31"
	36"	30 ¾"	39 ½"
	48"	39 ¼"	48"
8" Diameter DCC (2) 45° Elbows	0"	6 ⅞"	16 ⅝"
	12"	14 ½"	24 ¼"
	18"	18 ¾"	28 ½"
	24"	23"	32 ¾"
	36"	31 ½"	41 ⅜"
	48"	39 ⅝"	49 ⅜"





MODEL DCC DOUBLE WALL STOVE PIPE

TEE COMPONENTS



PART #	PRODUCT CODE	A	B
--------	--------------	---	---

6" Diameter

6DCC-T-BK	887012	16"	3"
-----------	--------	-----	----

8" Diameter

8DCC-T-BK	887028	17"	3"
-----------	--------	-----	----

Tee with Tee Cap

- Used where stove pipe connection is made at the rear of the appliance

ADAPTERS

PART #	PRODUCT CODE	A
--------	--------------	---

6" Diameter

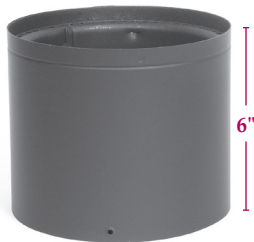
6XDCC-8-BK	887014	6" to 8"
------------	--------	----------

6XDCC-7		6" to 8"
---------	--	----------



Increaser

- Used at either the top or bottom of DCC stove pipe to increase a 6" DCC to an 8" DCC.
- The 6XDCC-7 to be used at the top of DCC stove pipe to increase the 6" DCC to a 7" chimney system



PART #	PRODUCT CODE	LENGTH
--------	--------------	--------

6" Diameter

6DCC-SA-BK	887011	6"
------------	--------	----

8" Diameter

8DCC-SA-BK	887027	6"
------------	--------	----

Stove Adapter

- 6" high adapter even fits over tall stove collars



ADAPTERS (CONTINUED)



PART # PRODUCT CODE

6" Diameter

6DCC-K-BK 887009

8" Diameter

8DCC-K-BK 887025

Double Wall Connector Kit

The kit includes:

- two 24" pipe sections
- one 18" adjustable length pipe section
- one stove adapter

Kits are available in 6" and 8" sizes to accommodate vertical installations up to 66"



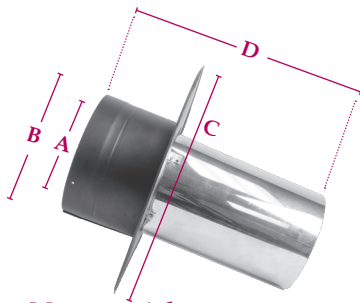
Oval-to-Round Adapter

- Used to convert 8" Oval Flue outlets to 8" Round DCC Stove Pipe
- Secure with screws

PART # PRODUCT CODE A B C

8" Diameter

8DCC-ORA-BK 887026 9 1/4" 12 1/2" 10"



Masonry Adapter

- For installations through a masonry wall
- Used to connect Double Wall Stove Pipe to an existing masonry chimney or a relined masonry chimney with stainless steel liner

PART # PRODUCT CODE A B C D

6" Diameter

6DCC-MA 887051 6" 7" 14" 13 5/8"

8" Diameter

8DCC-MA 887053



MODEL DCC DOUBLE WALL STOVE PIPE

UNIVERSAL FINISHING BAND

PART #	PRODUCT CODE	SIZE	PACK
DCC-FB-BK	887052	All	1



Universal Finishing Band

- Used to conceal the connecting joint at the chimney adapter

MISCELLANEOUS

PART

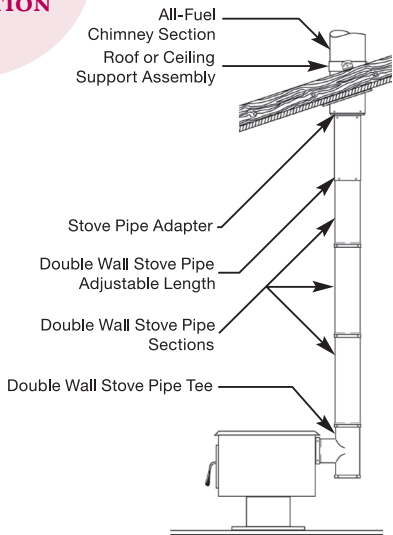
AVD-PTU



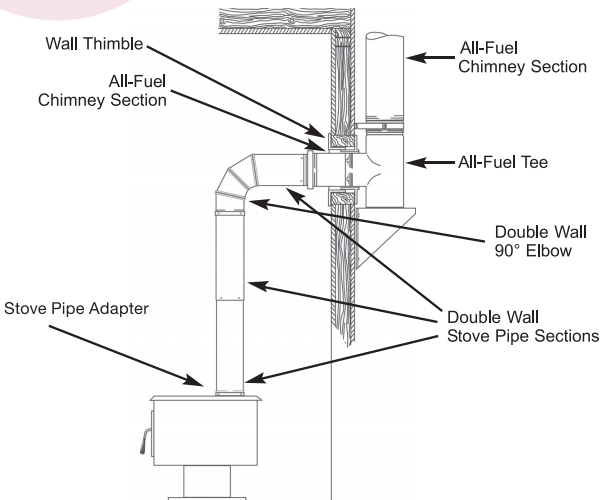
Black Touch-Up Paint

TYPICAL AMERIVENT SUPPORT INSTALLATIONS

VERTICAL SUPPORT INSTALLATION



WALL SUPPORT INSTALLATION





Model SLK Stainless Steel Chimney Liner is the superior choice for relining masonry chimneys for use with oil, wood, coal and noncondensing gas-fired appliances. In addition to the kit, we also provide accessories that allow for an easier installation. These accessories include a pull down used to stretch and lead the flexible liner down the chimney and a flex connector that joins flex lengths, flex to tee length and flex to appliance outlet. All kits have a limited lifetime warranty.



Construction Features

- Made from .005" thick, corrosion-resistant, type 316 stainless steel
- Available in 4" – 8" diameters with 25' and 35' lengths
- 25' and 35' individual lengths and 10' insulated sleeves for improved venting in cold climates also available
- 10' insulated sleeves include 10' of insulation wrap, 10' of wire mesh, wire ties, and 14' of foil tape or aluminum tape
- Stainless Tee features a 14" detachable branch for ease of installation
- Flashing with a 24" x 24" base plate

Complete Flex kit includes:



Rain Cap



Flashing Adapter



Flashing



Flexible Liner



Flexible Connector



Swivel Tee



Tee Cap



COMPLETE FLEX KITS



- Tighter compression for convenient storage and transport
- 10' insulated sleeves include 10' wrap, 10' of wire mesh, wire ties, and 14' of foil tape or aluminum tape
- Large 24" x 24" flashing base

PART #	PRODUCT CODE	DIAMETER
--------	--------------	----------

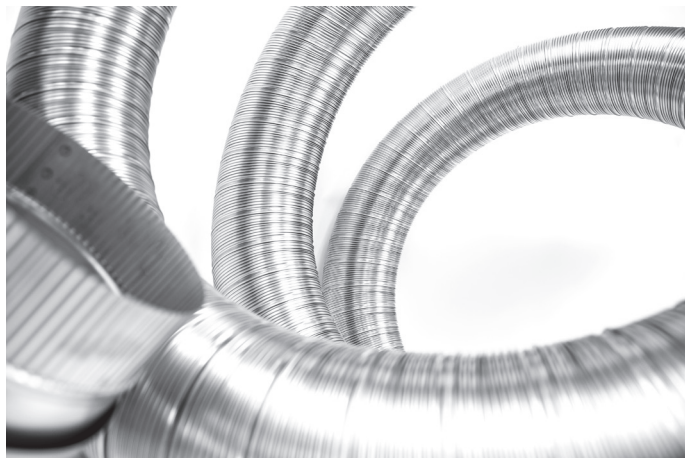
25' Complete Flex Kit

4SLK25	893016	4"
5SLK25	893018	5"
6SLK25	893020	6"
7SLK25	893022	7"
8SLK25	893024	8"

35' Complete Flex Kit

4SLK35	893017	4"
5SLK35	893019	5"
6SLK35	893021	6"
7SLK35	893023	7"
8SLK35	893025	8"

25' STAINLESS FLEX LENGTHS



PART #	PRODUCT CODE	DIAMETER
--------	--------------	----------

25' Stainless Flex Length

4SL-25L	893597	4"
5SL-25L	893598	5"
6SL-25L	893599	6"
7SL-25L	893600	7"
8SL-25L	893601	8"

35' Stainless Flex Length

4SL-35L	893602	4"
5SL-35L	893603	5"
6SL-35L	893604	6"
7SL-35L	893605	7"
8SL-35L	893606	8"

- Made from .005" thick, corrosion-resistant, type 316 stainless steel



PULL DOWNS



- Used to stretch and lead the flexible liner down the chimney

PART #	PRODUCT CODE	DIAMETER
4FX-PD	882986	4"
5FX-PD	882978	5"
6FX-PD	882989	6"
7FX-PD	882990	7"
8FX-PD	882991	8"

4FX-PD	882986	4"
5FX-PD	882978	5"
6FX-PD	882989	6"
7FX-PD	882990	7"
8FX-PD	882991	8"

FLEXIBLE CONNECTOR



- Joins flex lengths, flex to tee length, a flex to appliance outlet

PART #	PRODUCT CODE	DIAMETER
4FX-FC	893036	4"
5FX-FC	893037	5"
6FX-FC	893038	6"
7FX-FC	893039	7"
8FX-FC	893035	8"

4FX-FC	893036	4"
5FX-FC	893037	5"
6FX-FC	893038	6"
7FX-FC	893039	7"
8FX-FC	893035	8"

INSULATION SLEEVES



PART #	PRODUCT CODE	DIAMETER
10' Insulation Sleeve		
5SL-10I	893593	5"
6SL-10I	893594	6"
7SL-10I	893595	7"
8SL-10I	893596	8"

5SL-10I	893593	5"
6SL-10I	893594	6"
7SL-10I	893595	7"
8SL-10I	893596	8"

For 4" diameter liner, use 5" insulation sleeve

- 25' and 35' individual lengths and 10' insulated sleeves improve venting in cold climates
- 10' insulated sleeves include 10' of insulation wrap, 10' of wire mesh, hose clamps and 14' of foil



TYPE B GAS VENT

Model Type B Gas Vent is used for venting all Category 1 listed gas appliances having draft hoods and other appliances listed to be used with Type B Gas Vent. For more information on venting unlisted gas appliances or appliances burning solid or liquid fuels, request our All-Fuel Chimney catalog.

Certification & Applications



AmeriVent is a pioneer in the development and simplification of effective venting products since 1951, AmeriVent components are crafted for today's building and appliance requirements. For any Type B gas venting, you will find AmeriVent has the most complete line of pipe and accessories.

One of the fire safety features of double-wall Type B gas vent is that its outer wall, insulated by the airspace beneath it requires only 1" clearance to combustible material in the structure. AmeriVent is a complete gas venting system, from draft hood connectors to termination caps. Whatever your gas venting needs (from 3" to 30" pipe diameters in 7 different pipe lengths, from single to multi-appliance hook-ups) you can create almost any system from our more than 350 coordinated parts. Featuring Snap-Lock joints that are quick and easy to connect and disconnect, the AmeriVent Type B gas vent system is lightweight with no sacrifice in strength, and is available in large sizes, adjustable components, and multi-story Type BW venting installation.

Product Description

The Type B designation is assigned to gas venting systems that meet the safety requirements of Underwriters Laboratories, Inc. The AmeriVent all-metal, double-wall gas vent is listed as Type B by UL and is approved for such residential and commercial applications as Category 1 water heaters, boilers, furnaces, space heaters, or wall heaters. UL-approved Type B gas vent products form a continuous passageway from an approved gas appliance to the termination of the vent above the roof of the structure.



Locking Tab
3" through 6"

Specifications and Dimensions

Round	Pipe Sizes	Pipe Lengths
	3", 4", 5", 6", 7", 8"	6", 12", 18", 24", 3', 4', 5' (except 8" size)
Oval	Pipe Sizes	Pipe Lengths
	9", 10", 12", 14", 16", 18", 20", 22", 24", 26", 28", 30"	12", 18", 24", 3'
	4", 5"	6", 12", 18", 24", 3', 4', 5'
Maximum Height	6"	6", 12", 18", 24", 3'
	Unlimited if properly supported	
Insulation	½ BTU per hour per square foot per degree F temperature differential (U factor = 0.5)	
Approved, Accepted, or Listed by	AGA, NFPA, HUD, NBC, UBC Underwriters Laboratories, Inc. to UL441 test standard	
How to Specify	Gas vents shall be UL-listed AmeriVent Gas Vent or equal installed in accordance with terms of the UL-listing and the manufacturer's published instructions.	

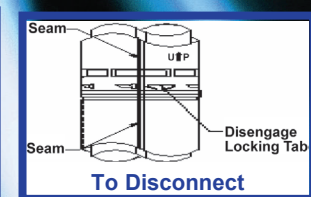
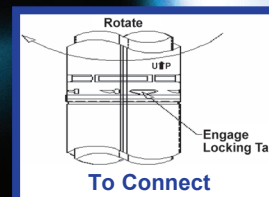
The AmeriVent Type B Quick Disconnect System

To Connect: Snap-lock pipe and fittings together

To Disengage the Locking Tab: Align the seams and pull apart

Locking Tab: To ensure a secure fit, push in the locking tab to lock the pipes together

Engagement: Snap-lock joints overlap - to calculate height deduct 1" for each joint

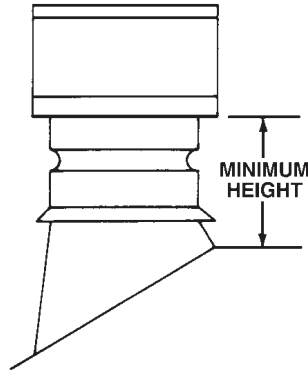




GAS VENT TABLES - ROUND AND OVAL

TERMINATION HEIGHT TABLE

AmeriVent caps in 3" through 12" sizes may be installed in accordance with the Gas Vent Termination Table if the vent is at least 8' from any vertical wall. For installation of caps 14" and larger, or for caps that are less than 8' from a vertical wall, the cap is to be located no less than 2' above the highest point where the vent passes through the roof and at least 2' higher than any portion of a building within 10'.



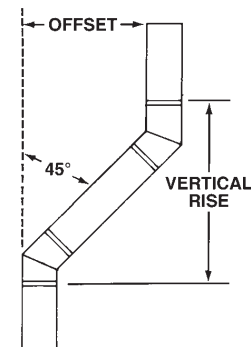
ROOF PITCH		MINIMUM HEIGHT
Flat	to 7/12	1 ft
Over	7/12 to 8/12	1 ½ ft
Over	8/12 to 9/12	2 ft
Over	9/12 to 10/12	2 ½ ft
Over	10/12 to 11/12	3 ¼ ft
Over	11/12 to 12/12	4 ft
Over	12/12 to 14/12	5 ft
Over	14/12 to 16/12	6 ft
Over	16/12 to 18/12	7 ft
Over	18/12 to 20/12	7 ½ ft
Over	20/12 to 21/12	8 ft

OFFSET TABLE

This table is used to determine the offset produced by two AmeriVent 45° adjustable elbows set at the maximum angle of 45°. Also shown are the offsets produced by introducing various lengths of AmeriVent between the two elbows.

Maximum Offset in Inches

VENT SIZE	(2) 45° ELBOWS	LENGTH						
		(1) 6"	(1) 12"	(1) 18"	(1) 24"	(1) 3'	(1) 4'	(1) 5'
3	3 ¼"	6 ¾"	11"	15 ¼"	19 ½"	28"	36 ½"	45"
4	3 ½"	7"	11 ¼"	15 ½"	19 ¾"	28 ¼"	36 ¾"	45 ¼"
5	4 ¼"	7 ¾"	12"	16 ¼"	20"	29"	37 ½"	46"
6	4 ½"	8"	12 ¼"	16 ½"	20 ¾"	29 ¼"	37 ¾"	46 ¼"
7	5"	8 ½"	12 ¾"	17"	21 ¼"	29 ¾"	38 ¼"	46 ¾"
8	5 ½"	9"	13 ¼"	17 ½"	21 ¾"	30 ¼"		47 ¼"
9	6"		13 ¾"	18"	22 ¼"	30 ¾"		
10	7 ¼"		15"	19 ¼"	23 ½"	32"		
12	7 ½"		15"	19 ¼"	23 ½"	32"		
14	8 ½"		16 ¼"	20 ½"	24 ¾"	33 ¼"		
16	9 ¼"		17"	21 ¼"	25 ½"	34"		
18	10"		17 ¾"	22"	26 ¼"	34 ¾"		
20	10 ¼"		18"	22 ¼"	26 ½"	35"		
22	10 ½"		18"	22 ¼"	26 ½"	35"		
24	11 ¼"		19"	23 ¼"	27 ½"	36"		
26	12"		19 ¾"	24"	28 ¼"	36 ¾"		
28	12 ¾"		20 ½"	24 ¾"	29"	37 ½"		
30	13 ½"		21 ¼"	25 ½"	29 ¾"	38 ¼"		



Note: The vertical rise can also be closely estimated by adding one "A" and one "B" dimension to Maximum Offset figures. (See dimensions of Round Adjustable 45° Elbows.)



GAS VENT TABLES - ROUND AND OVAL

SYSTEM DESIGN AND INSTALLATION GUIDES

The following installation guidelines have been prepared to assist you in your particular application and in installing a vent correctly.

Before laying out a gas vent system for any gas appliance, the installer should first consult the local code and the appliance manufacturer's installation requirements. Only then should you pick your components and design your vent system.

AmeriVent offers a wide range of round and oval pipe sizes and adjustable components to provide maximum design flexibility. All three basic gas vent installations (as defined by Underwriters Laboratories, Inc.) can be constructed using AmeriVent. These three are:

TYPE B

AmeriVent (Sizes 3" through 30" round and sizes 4", 5", and 6" oval) may be installed with 1" minimum clearance to combustibles.

TYPE BW

4" oval AmeriVent (when installed in 2 x 4 stud wall with recessed heater) requires clearances as determined by use of 40HD hold-down plate, 40PS ceiling plate spacers, and 40FS firestop spacers.

TYPE B 2 X 4

4" and 5" oval AmeriVent (when installed in 2 x 4 stud wall with other than recessed heater) requires clearance as determined by use of 40FS or 50FS firestop spacers at each ceiling level.

To graphically illustrate the use of AmeriVent components in typical installations, we offer the diagrams on the next page. Here you'll see just about every AmeriVent part and how each contributes to a complete installation.

To guide you in these and other installations, the following general rules should be followed.

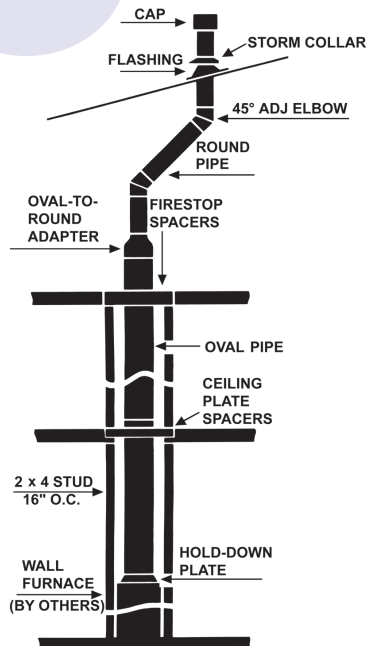
1. Provide an adequate air supply. Remember, you must meet local code minimum requirements for both combustion air and draft hood dilution air.
2. Attach vent to appliances draft hood with sheet metal screws and terminate the vent at least 5' above the draft hood. For wall furnaces, vents must terminate at least 12' from bottom of heater. See Gas Vent Termination Table for required height above roof.
3. One gas vent may serve more than one gas appliance. Prudent advanced planning (see diagrams) can save you time.
4. Keep offsets and lengths of laterals to a minimum to reduce vent resistance.
5. Strap the vent securely in position, always maintaining at least 1" clearance to combustibles. Firestops should be used where vents pass through floors, walls, or ceilings. (See Product Description section for Round Wall Thimble, Vent Collar, Bucket Support, Support Plate, Firestop Support Plate, and Oval Firestop Spacer.)
6. The vent termination must be securely guyed or braced if it extends more than 5' above the roof.
7. For longer-lasting durability and better appearance, all vents exposed to the weather (except caps) should be painted.
8. Excessive exterior vents reduce venting action; therefore, such installations are not recommended.

For additional guidance in proper sizing of Type B Gas Vent refer to the **Venting Guidelines for Category I Gas Appliances** (Available on www.ameri-vent.com)

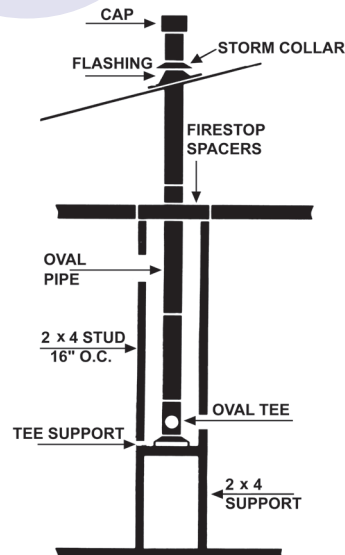


TYPICAL AMERIVENT TYPE B GAS VENT INSTALLATIONS - ROUND AND OVAL

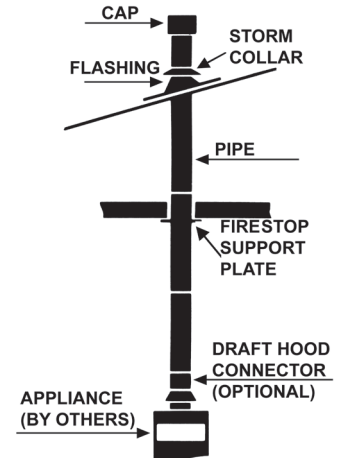
TYPE BW



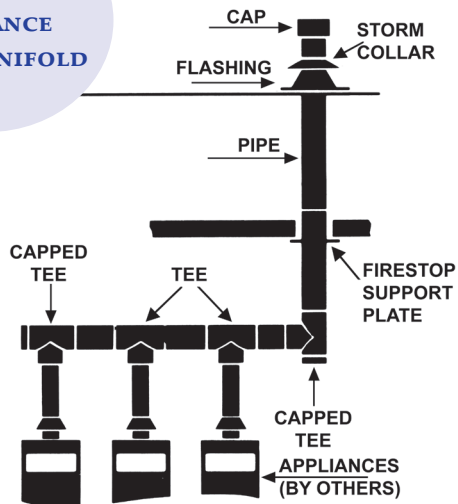
TYPE B 2x4
4" OR 5" Oval in
2x4 STUD WALL



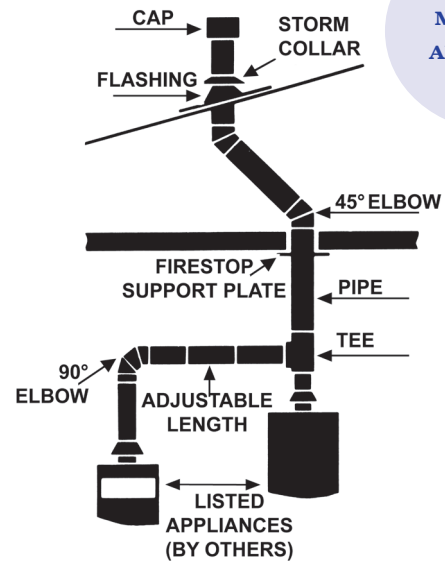
SINGLE
APPLIANCE



MULTIPLE
APPLIANCE
WITH MANIFOLD

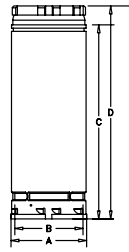


MULTIPLE
APPLIANCE





LENGTHS



Lengths - Round

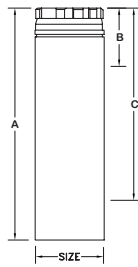
- Made of corrosion-resistant galvanized steel and aluminum double-wall construction
- Snap-lock coupling for easy installation

PART #	SIZE	A - O.D.	B - I.D.	C	D
3E6	3"	3 1/2"	3"	5"	6"
3E12	3"	3 1/2"	3"	11"	12"
3E18	3"	3 1/2"	3"	17"	18"
3E24	3"	3 1/2"	3"	23"	24"
3E3	3"	3 1/2"	3"	35"	36"
3E4	3"	3 1/2"	3"	47"	48"
3E5	3"	3 1/2"	3"	59"	60"
4E6	4"	4 1/2"	4"	5"	6"
4E12	4"	4 1/2"	4"	11"	12"
4E18	4"	4 1/2"	4"	17"	18"
4E24	4"	4 1/2"	4"	23"	24"
4E3	4"	4 1/2"	4"	35"	36"
4E4	4"	4 1/2"	4"	47"	48"
4E5	4"	4 1/2"	4"	59"	60"
5E6	5"	5 1/2"	5"	5"	6"
5E12	5"	5 1/2"	5"	11"	12"
5E18	5"	5 1/2"	5"	17"	18"
5E24	5"	5 1/2"	5"	23"	24"
5E3	5"	5 1/2"	5"	35"	36"
5E4	5"	5 1/2"	5"	47"	48"
5E5	5"	5 1/2"	5"	59"	60"
6E6	6"	6 1/2"	6"	5"	6"
6E12	6"	6 1/2"	6"	11"	12"
6E18	6"	6 1/2"	6"	17"	18"
6E24	6"	6 1/2"	6"	23"	24"
6E3	6"	6 1/2"	6"	35"	36"
6E4	6"	6 1/2"	6"	47"	48"
6E5	6"	6 1/2"	6"	59"	60"
7R6	7"	8"	7"	5"	6"
7R12	7"	8"	7"	11"	12"
7R18	7"	8"	7"	17"	18"
7R24	7"	8"	7"	23"	24"
7R3	7"	8"	7"	35"	36"
7R4	7"	8"	7"	47"	48"
7R5	7"	8"	7"	59"	60"
8R6	8"	9"	8"	5"	6"
8R12	8"	9"	8"	11"	12"
8R18	8"	9"	8"	17"	18"
8R24	8"	9"	8"	23"	24"
8R3	8"	9"	8"	35"	36"
8R5	8"	9"	8"	59"	60"

PART #	SIZE	A - O.D.	B - I.D.	C	D
9R12	9"	10"	9"	11"	12"
9R18	9"	10"	9"	17"	18"
9R24	9"	10"	9"	23"	24"
9R3	9"	10"	9"	35"	36"
10R12	10"	11"	10"	11"	12"
10R18	10"	11"	10"	17"	18"
10R24	10"	11"	10"	23"	24"
10R3	10"	11"	10"	35"	36"
12R12	12"	13"	12"	11"	12"
12R18	12"	13"	12"	17"	18"
12R24	12"	13"	12"	23"	24"
12R3	12"	13"	12"	35"	36"
14R12	14"	15"	14"	11"	12"
14R18	14"	15"	14"	17"	18"
14R24	14"	15"	14"	23"	24"
14R3	14"	15"	14"	35"	36"
16R12	16"	17"	16"	11"	12"
16R18	16"	17"	16"	17"	18"
16R24	16"	17"	16"	23"	24"
16R3	16"	17"	16"	35"	36"
18R12	18"	19"	18"	11"	12"
18R18	18"	19"	18"	17"	18"
18R24	18"	19"	18"	23"	24"
18R3	18"	19"	18"	35"	36"
20R12	20"	21"	20"	11"	12"
20R18	20"	21"	20"	17"	18"
20R24	20"	21"	20"	23"	24"
20R3	20"	21"	20"	35"	36"
22R12	22"	23"	22"	11"	12"
22R18	22"	23"	22"	17"	18"
22R24	22"	23"	22"	23"	24"
22R3	22"	23"	22"	35"	36"
24R12	24"	25"	24"	11"	12"
24R18	24"	25"	24"	17"	18"
24R24	24"	25"	24"	23"	24"
24R3	24"	25"	24"	35"	36"
26R12	26"	27"	26"	11"	12"
26R18	26"	27"	26"	17"	18"
26R24	26"	27"	26"	23"	24"
26R3	26"	27"	26"	35"	36"
28R12	28"	29"	28"	11"	12"
28R18	28"	29"	28"	17"	18"
28R24	28"	29"	28"	23"	24"
28R3	28"	29"	28"	35"	36"
30R12	30"	31"	26"	11"	12"
30R18	30"	31"	26"	17"	18"
30R24	30"	31"	26"	23"	24"
30R3	30"	31"	26"	35"	36"



LENGTHS (CONTINUED)

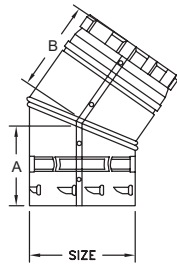


Adjustable Length - Round

- Adjustable lengths telescope into standard AmeriVent pipe sections to reach desired length

PART #	PIPE SIZE	ADJ LENGTH	EXTENSION FROM B	LENGTH TO C
3E12A	3"	12"	3"	10"
4E12A	4"	12"	3"	10"
5E12A	5"	12"	3"	10"
6E12A	6"	12"	3"	10"
7R12A	7"	12"	3"	10"
8R12A	8"	12"	3"	10"
9R18A	9"	18"	3"	16"
10R18A	10"	18"	3"	16"
12R18A	12"	18"	3"	16"
14R18A	14"	18"	5"	16"
16R18A	16"	18"	5"	16"
18R18A	18"	18"	5"	16"
20R18A	20"	18"	5"	16"
22R18A	22"	18"	5"	16"
24R18A	24"	18"	5"	16"
26R18A	26"	18"	5"	16"
28R18A	28"	18"	5"	16"
30R18A	30"	18"	5"	16"

ELBOWS



45° Elbow - Round

- Used to offset installation to avoid obstructions such as rafters & joists
- Size 3" through 14" adjust easily from 0° to 45°
- Sizes 16" through 30" are non-adjustable
- See the Gas Vent Offset Chart

0° to 45° Adjustable

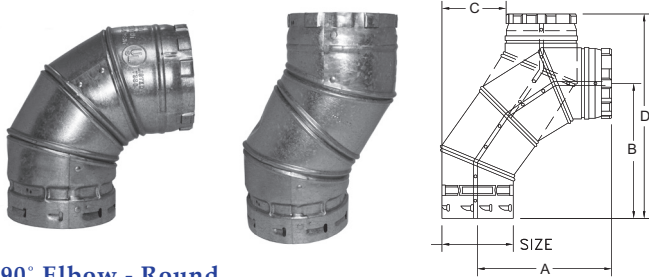
3E45	3"	3"	2 3/4"
4E45	4"	3 1/8"	3 1/16"
5E45	5"	3 1/2"	3 1/2"
6E45	6"	4"	3 13/16"
7R45	7"	4 15/16"	4 1/4"
8R45	8"	4 3/4"	4 9/16"
9R45	9"	5"	5 3/8"
10R45	10"	5 7/8"	5 3/8"
12R45	12"	6"	5 3/8"
14R45	14"	6 5/8"	6 1/2"

Non-Adjustable

16R45	16"	7"	7"
18R45	18"	7 1/2"	7 1/2"
20R45	20"	8"	7 5/8"
22R45	22"	8 1/2"	8 5/8"
24R45	24"	8 5/8"	8 15/16"
26R45	26"	9"	9"
28R45	28"	9 1/2"	9 1/2"
30R45	30"	10"	10"



ELBOWS (CONTINUED)

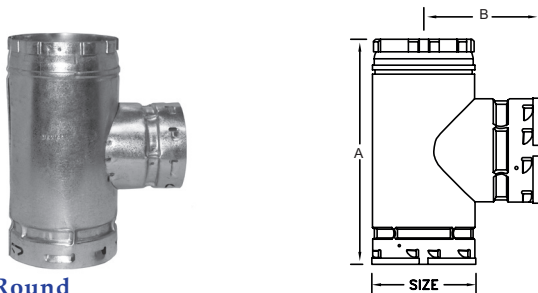


90° Elbow - Round

- Adjusts from 0° to 90° easily in order to clear rafters or ceiling joists
- Constructed of four sections for smoother bends and less resistance

PART #	SIZE	A	B	C	D
3EAL	3"	4 ½"	5 ¼"	1 ½"	8"
4EAL	4"	5"	5 ½"	1 ½"	8 ¾"
5EAL	5"	5 ½"	6"	2 ¼"	9 ¼"
6EAL	6"	6 ½"	7"	2 ½"	10 ¼"
7RAL	7"	7 ¾"	8"	3"	12 ¼"
8RAL	8"	8 ¾"	9"	3 ¼"	13"

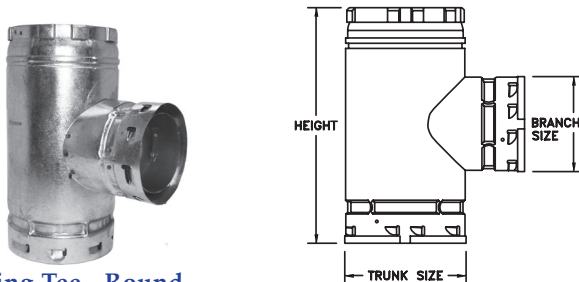
TEE COMPONENTS



Tee - Round

- Transitions a system from horizontal to vertical orientation
- Branch and trunk diameters of the standard tee are the same size
- For smaller branch sizes, use a reducing tee up to 6" size
- For larger sizes, use an increaser with a standard tee

PART #	SIZE	A	B
3ET	3"	7 ⅞"	4 ⅞"
4ET	4"	8 ⅞"	4 ⅞"
5ET	5"	10"	5 ¼"
6ET	6"	11 ½"	5 ¾"
7RT	7"	13"	6 ½"
8RT	8"	14"	6 ⅞"
9RT	9"	15"	7 ¾"
10RT	10"	16"	8 ⅛"
12RT	12"	17 ⅞"	9 ¾"
14RT	14"	24"	11 ¾"
16RT	16"	26"	13"
18RT	18"	28 ½"	14 ¼"
20RT	20"	30"	15 ½"
22RT	22"	33"	16 ¾"
24RT	24"	36"	18"
26RT	26"	38"	19"
28RT	28"	40"	20"
30RT	30"	42"	21"



Reducing Tee - Round

- Features a branch with a smaller diameter than its trunk size, and provides a convenient connection of the furnace and water heater to a common vent

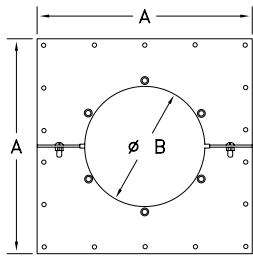
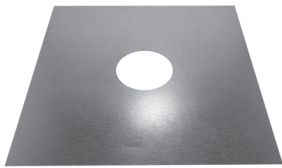
PART #	TRUNK SIZE	BRANCH SIZE	HEIGHT
4ET-3	4"	3"	8 ⅞"
5ET-3	5"	3"	10"
5ET-4	5"	4"	10"
6ET-3	6"	3"	11 ½"
6ET-4	6"	4"	11 ½"
6ET-5	6"	5"	11 ½"



TEE COMPONENTS (CONTINUED)

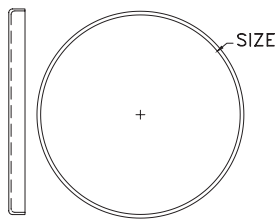
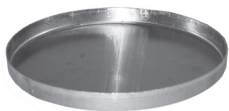
PART #

3-6SP



Tee Support Plate - Round

- Supports tee sizes 3" to 6"
- Used as a base for Type B gas vent



Round Tee Cap

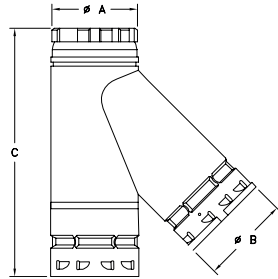
- Used to close the bottom of a Tee or Wye

PART #	SIZE
3ETC	3"
4ETC	4"
5ETC	5"
6ETC	6"
7RTC	7"
8RTC	8"
9RTC	9"
10RTC	10"
12RTC	12"
14RTC	14"
16RTC	16"
18RTC	18"
20RTC	20"
22RTC	22"
24RTC	24"
26RTC	26"
28RTC	28"
30RTC	30"



TYPE B GAS VENT ~ ROUND

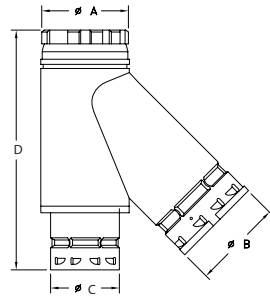
WYE



PART #	SIZE	A	B	C
4EY	4"	4 ½"	4 ½"	9"

Standard Wye - Round

- Used to common vent two or more appliances and provides better gas flow than a standard tee
- Features the branch, trunk, and base diameter with the same size

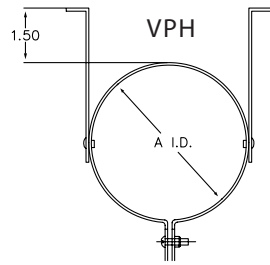


Reduction Wye - Round

- Used to common vent two or more appliances and provides better gas flow than a standard tee
- Features a branch and/or base with a smaller diameter than the trunk size

PART #	SIZE	A	B	C	D
4EY-3	4"	4 ½"	3 ½"	4 ½"	9"
5EY-3	5"	5 ½"	3 ½"	5 ½"	9"
5EY-4	5"	5 ½"	4 ½"	5 ½"	10 ½"
5EY-33	5"	5 ½"	3 ½"	3 ½"	12"
5EY-34	5"	5 ½"	3 ½"	4 ½"	12"
5EY-43	5"	5 ½"	4 ½"	3 ½"	13 ½"
5EY-44	5"	5 ½"	4 ½"	4"	13 ½"
6EY-3	6"	6 ½"	3 ½"	6 ½"	9"
6EY-4	6"	6 ½"	4 ½"	6 ½"	10 ½"
6EY-5	6"	6 ½"	5 ½"	6 ½"	12"

VENT PIPE HANGERS



Vent Pipe Hanger - Round

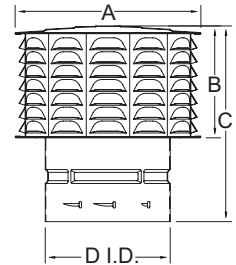
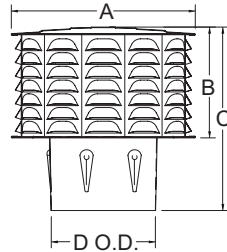
- Provide support and resupport for offsets and horizontal runs of AmeriVent gas vent
- VPH Vent Pipe Hanger provides 1½" spacing
- SBA Vent Pipe Hanger provides 2" spacing

PART #	PIPE SIZE	A
3VPH	3" E	3 ½"
4VPH	4" E	4 ½"
5VPH	5" E	5 ½"
6VPH	6" E	6 ½"
7VPH	7" R	8"
6HS-SBA	8" R	9"
8HS-SBA	10" R	11"
10FB-SBA	12" R	13"



RAIN CAPS

- Used as a ventilation cap as well as a Type B gas vent termination
- Protects against wind conditions that can cause gases to spill back into the structure through the appliance draft hood
- UL-listed, and its patented design of ports and baffles keep rain and debris out of the vent
- Permits termination of vents at the minimum height necessary above the roof surface

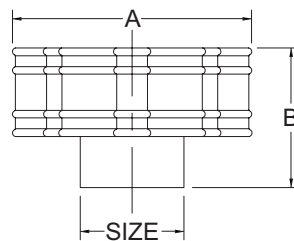


Model CW Universal Cap - Round

PART #	SIZE	A	B	C	D - O.D.
3CW	3"	6 3/4"	2 7/8"	4 3/4"	2 3/4"
4CW	4"	6 3/4"	4 3/8"	6 1/2"	3 7/8"
5CW	5"	9 7/8"	4 5/16"	7 3/8"	4 3/4"
6CW	6"	9 7/8"	5 3/4"	9"	5 3/4"
7CW	7"	12 7/8"	6 3/8"	9 3/16"	6 3/4"
8CW	8"	12 7/8"	7"	10"	7 5/8"

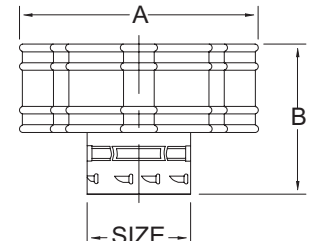
Model ECW or RCW Snap-Lock Cap - Round

PART #	SIZE	A	B	C	D - O.D.
3ECW	3"	6 3/4"	2 7/8"	5 5/16"	3 1/2"
4ECW	4"	6 3/4"	4 3/8"	7"	4 1/2"
5ECW	5"	9 7/8"	4 5/16"	7 3/8"	5 1/2"
6ECW	6"	9 7/8"	5 3/4"	9"	6 1/2"
7RCW	7"	12 7/8"	6 3/8"	9 1/2"	8"
8RCW	8"	12 7/8"	7"	10 5/16"	9"



Model C Universal Cap - Round

PART #	SIZE	A	B
9C	9"	15 3/4"	7 1/2"
10C	10"	15 3/4"	7 1/2"
12C	12"	19"	9"
14C	14"	22"	11"
16C	16"	25"	12"
18C	18"	28 1/4"	13 1/2"
20C	20"	31 1/2"	15"
22C	22"	34 1/2"	16 1/2"
24C	24"	37 3/4"	18"
26C	26"	42"	19 1/2"
28C	28"	44"	21"
30C	30"	48"	22 1/2"

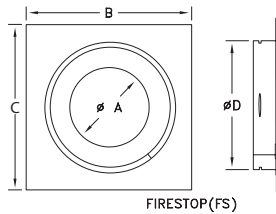
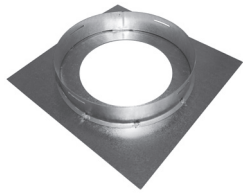


Model RC Snap-Lock Cap - Round

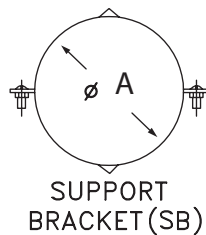
PART #	SIZE	A	B
9RC	9"	15 3/4"	7 1/2"
10RC	10"	15 3/4"	7 1/2"
12RC	12"	19"	9"
14RC	14"	22"	11"
16RC	16"	25"	12"
18RC	18"	28 1/4"	13 1/2"
20RC	20"	31 1/2"	15"
22RC	22"	34 1/2"	16 1/2"
24RC	24"	37 3/4"	18"
26RC	26"	42"	19 1/2"
28RC	28"	44"	21"
30RC	30"	48"	22 1/2"



FIRESTOP SUPPORT



Firestop



Firestop Support Bracket



Firestop Support

- Supports Type B gas vent starting at the appliance level and includes a support bucket
- Supports up to 20'
- Includes Firestop (FS) and Support Bracket (SB)

PART #	PIPE SIZE	A	B	C	D
3FS	3"	3 5/8"	7 1/2"	3 1/2"	5 1/2"
4FS	4"	4 5/8"	8 1/2"	4 1/2"	6 1/2"
5FS	5"	5 5/8"	9 1/2"	5 1/2"	7 1/2"
6FS	6"	6 5/8"	10 1/2"	6 1/2"	8 1/2"
7FS	7"	8 1/8"	21"	8"	10"
8FS	8"	9 1/8"	13"	9"	11"

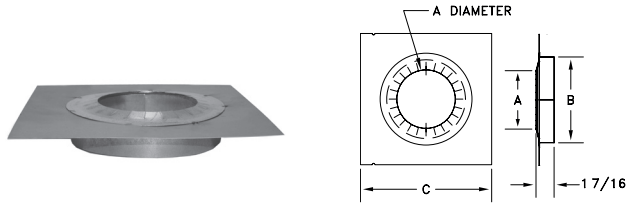
PART #	PIPE SIZE	A
3SB	3"	3 1/2"
4SB	4"	4 1/2"
5SB	5"	5 1/2"
6SB	6"	6 1/2"

PART #	PIPE SIZE	A	B	C	D
3FSP	3"	3 5/8"	7 1/2"	3 1/2"	5 1/2"
4FSP	4"	4 5/8"	8 1/2"	4 1/2"	6 1/2"
5FSP	5"	5 5/8"	9 1/2"	5 1/2"	7 1/2"
6FSP	6"	6 5/8"	10 1/2"	6 1/2"	8 1/2"
7FSP	7"	8 1/8"	21"	8"	10"
8FSP	8"	9 1/8"	13"	9"	11"

The support bracket (SB) and firestop (FS) are also available separately.



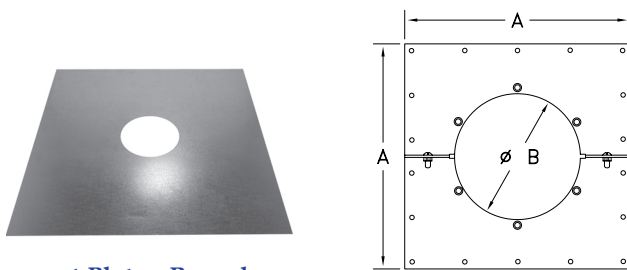
FIRESTOP SUPPORT (CONTINUED)



Gripper Support - Round

- UL-listed as a support and firestop, the gripper support is strong enough to hold up to 30' of vent pipe
- Installs very quickly and allows for adjustment of the pipe to wherever needed
- A ring on the bottom provides the UL-required, one-inch clearance to combustibles (3" to 6" only; 7" to 10" are not UL-listed)
- No tools are required

PART #	PIPE SIZE	A	B	C
3EGS	3"	3 1/2"	5 1/2"	9"
4EGS	4"	4 1/2"	6 1/2"	10"
5EGS	5"	5 1/2"	7 1/2"	11"
6EGS	6"	6 1/2"	8 1/2"	12"
7EGS	7"	8"	10"	13"
8EGS	8"	9"	11"	14"
9EGS	9"	10"	12"	15"
10EGS	10"	11"	13"	16"

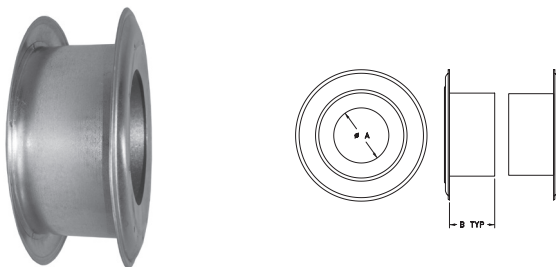


Support Plate - Round

- Designed to provide strength and durability for supporting large size pipe sections, and serves as a firestop
- Supports up to 30'

PART #	PIPE SIZE	A	B
9RSP	9"	17"	9 5/8"
10RSP	10"	18"	10 5/8"
12RSP	12"	20"	12 5/8"
14SP	14"	22"	14 5/8"
16SP	16"	24"	16 5/8"
18SP	18"	26"	18 5/8"
20SP	20"	28"	20 5/8"
22SP	22"	30"	22 5/8"
24SP	24"	32"	24 5/8"
26SP	26"	34"	26 5/8"
28SP	28"	36"	28 5/8"
30SP	30"	38"	30 5/8"

WALL THIMBLE



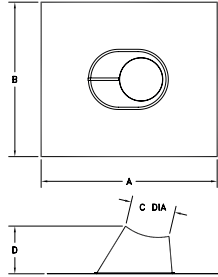
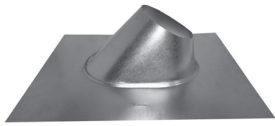
Wall Thimble - Round

- Used to install pipe through an interior wall and provide proper clearance from combustibles
- The wall thimble adjusts for various wall thicknesses from 4" to 6"

PART #	SIZE	A	B
3EWT	3"	3 1/16"	3 1/16"
4EWT	4"	4 1/16"	3 1/16"
5EWT	5"	5 1/16"	3 1/16"
6EWT	6"	6 1/16"	3 1/4"
7RWT	7"	8 1/16"	3 1/4"
8RWT	8"	9 1/16"	3 1/4"
9RWT	9"	10 1/16"	3 1/4"
10RWT	10"	11 1/16"	3 1/4"
12RWT	12"	13 1/16"	3 1/4"



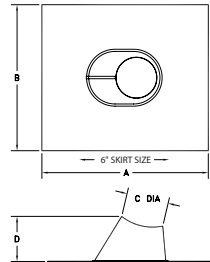
FLASHINGS



Standard Flashing - Round

- Used where the vent passes through the roof
- Fits flat to 6/12 pitch roof
- Built with double-seamed construction for protection from leakage

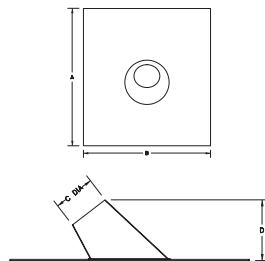
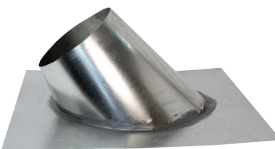
PART #	SIZE	A	B	C DIA	D
3EF	3"	14 3/4"	12 1/2"	3 5/8"	4"
4EF	4"	16 3/8"	13 3/4"	4 5/8"	5"
5EF	5"	17 15/16"	15"	5 5/8"	4 9/16"
6EF	6"	18 3/4"	16 1/8"	6 5/8"	6"
7RF	7"	20"	17 7/8"	8 5/32"	6 5/8"
8RF	8"	21"	21"	9 5/32"	6 5/8"
9RF	9"	22"	22"	10 5/32"	6 5/8"
10RF	10"	24 1/8"	24 1/8"	11 5/32"	7 1/8"
12RF	12"	25 1/16"	25 1/16"	13 1/8"	7 5/8"
14F	14"	28"	28"		
16F	16"	30 1/8"	30 1/8"		
18F	18"	31 1/2"	31 1/2"		
20F	20"	34"	34"		
22F	22"	34 1/2"	34 1/2"		
24F	24"	37"	37"		
26F	26"	43"	43"		
28F	28"	45"	45"		
30F	30"	46"	46"		



6" Skirt Standard Flashing - Round

- A standard flashing with a 6" skirt

PART #	SIZE	A	B	C DIA	D
3EFFU	3"	20 1/4"	15 1/2"	3 5/8"	4"
4EFFU	4"	20 1/4"	18"	4 5/8"	5"
5EFFU	5"	24"	19"	5 5/8"	4 9/16"
6EFFU	6"	24"	19"	6 5/8"	6"
7RFFU	7"	25 1/16"	21 1/2"	8 5/32"	6 5/8"
8RFFU	8"	25 1/16"	25 1/16"	9 5/32"	6 5/8"
9RFFU	9"	26"	26"	10 5/32"	6 5/8"
10RFFU	10"	29"	27"	11 5/32"	7 1/8"
12RFFU	12"	29"	29"	13 1/8"	7 5/8"
14RFFU	14"	32"	32"	15 1/8"	8 1/8"



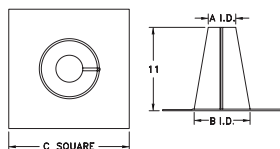
Steep Pitch Flashing - Round

- Handles roof pitches of 6/12 to 12/12

PART #	SIZE	A	B	C DIA	D
3EF12	3"	17 7/8"	15"	3 5/8"	6 1/2"
4EF12	4"	17 7/8"	15"	4 5/8"	6 13/16"
5EF12	5"	22 5/8"	17"	5 5/8"	7 1/2"
6EF12	6"	22 5/8"	17"	6 5/8"	8"
7RF12	7"	21 13/16"	21 13/16"	8 1/8"	8 7/8"
8RF12	8"	23 1/8"	23 1/8"	9 1/8"	9 1/2"



FLASHINGS (CONTINUED)

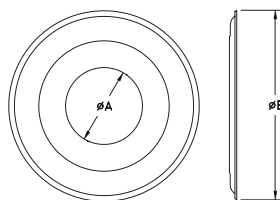


Tall Cone Flashing - Round

- Fits flat to 1/12 roof pitch
- Used on flat roofs in snow packed areas to reduce chances of snow covering vent

PART #	SIZE	A I.D.	B I.D.	C
3EFT	3"	3 5/8"	7 1/2"	16"
4EFT	4"	4 5/8"	7 1/2"	16"
5EFT	5"	5 5/8"	7 1/2"	16"
6EFT	6"	6 5/8"	7 1/2"	16"
7RFT	7"	8 1/8"	11"	18 9/16"
8RFT	8"	9 1/8"	11"	18 9/16"
9RFT	9"	10 1/8"		
10RFT	10"	11 1/8"	16"	24 1/8"
12RFT	12"	13 1/8"	16"	24 1/8"
14FT	14"	15 1/16"	19 5/16"	27"
16FT	16"	17 1/16"	19 5/16"	30"
18FT	18"	19 1/16"	23 1/16"	32 5/16"
20FT	20"	21 1/16"	23 1/16"	36"
22FT	22"	23 1/16"	27 1/16"	39"
24FT	24"	25 1/16"	27 1/16"	40"
26FT	26"	27 1/16"	31 1/16"	43"
28FT	28"	29 1/16"	31 1/16"	45"
30FT	30"	31 1/16"	35 1/16"	46"

VENT COLLARS



Vent Collar - Round

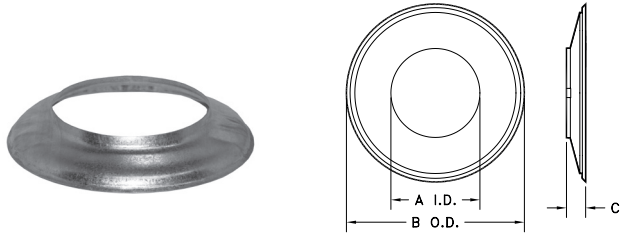
- The vent collar provides a cover for a rough wall opening
- Fits double-wall pipe only

PART #	SIZE	A I.D.	B
3EVC	3"	3 5/8"	8 3/4"
4EVC	4"	4 5/8"	8 3/4"
5EVC	5"	5 5/8"	10 7/8"
6EVC	6"	6 5/8"	12 7/8"
7RVC	7"	8 1/8"	14 7/8"
8RVC	8"	9 1/8"	16 7/8"
9RVC	9"	10 1/8"	18 7/8"
10RVC	10"	11 1/8"	20 7/8"
12RVC	12"	13 1/8"	22 7/8"

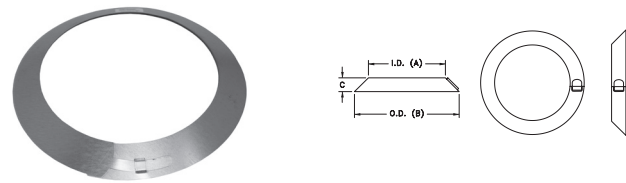


STORM COLLAR

- Used just above the flashing to provide protection from the weather
- Seal the inner edge with sealant against pipe



Fixed Storm Collar - Round



Adjustable Storm Collar - Round

Fixed

PART #	SIZE	A I.D.	B O.D.	C
3ESC	3"	3 1/2"	6 5/8"	1 7/16"
4ESC	4"	4 1/2"	7 5/8"	1 1/2"
5ESC	5"	5 1/2"	8 5/8"	1 5/8"
6ESC	6"	6 1/2"	9 5/8"	1 1/2"

Adjustable

7RSC	7"	8"	10 7/8"	1 7/16"
8RSC	8"	9"	11 7/8"	1 7/16"
9RSC	9"	10"	13 3/16"	1 1/2"
10RSC	10"	11"	14 1/2"	1 3/4"
12RSC	12"	13"	16 1/2"	1 3/4"
14SC	14"	15"	18 1/2"	1 15/16"
16SC	16"	17"	21 1/4"	2 1/8"
18SC	18"	19"	23 3/4"	2 5/16"
20SC	20"	21"	25 15/16"	2 1/2"
22SC	22"	23"	28 5/16"	2 11/16"
24SC	24"	25"	30 11/16"	1 7/8"
26SC	26"	27"	33 1/16"	3 1/16"
28SC	28"	29"	35 1/16"	3 1/4"
30SC	30"	31"	37 1/16"	3 7/16"

ADAPTERS

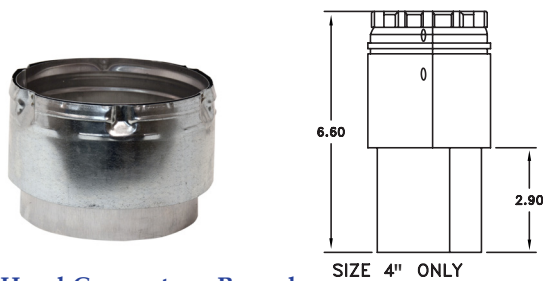


Bucket Connector - Round

PART # SIZE

3EBC	3"
4EBC	4"
5EBC	5"
6EBC	6"
7EBC	7"
8EBC	8"

- (EBC) is used to make the connection of either AmeriVent single-wall connector pipe, or AmeriVent Type B Gas Vent, utilized as connector through the bottom of the AmeriVent Bucket



Draft Hood Connector - Round

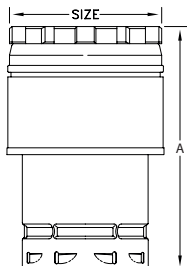
- Connects Type B gas vent directly to an appliance draft hood
- The flexible inlet can be shaped to fit oval draft hood outlets

PART # SIZE A

3EDC	3"	6"
4EDC	4"	6.6"
5EDC	5"	6"
6EDC	6"	6"
7RDC	7"	6"
8RDC	8"	6"
9RDC	9"	7"
10RDC	10"	7"
12RDC	12"	7"



ADAPTERS (CONTINUED)

**Increaser - Round**

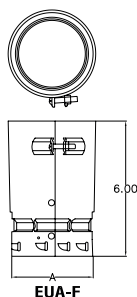
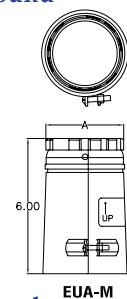
- Used to increase the vent size
- A max of 4 steps of increase

PART	SIZE
3EIX4	4"
3EIX5	5"
4EIX5	5"
3EIX6	6"
4EIX6	6"
5EIX6	6"
3EIX7	7"
4EIX7	7"
5EIX7	7"
6EIX7	7"

PART	SIZE
4EIX8	8"
5EIX8	8"
6EIX8	8"
7RIX8	8"
5EIX9	9"
6EIX9	9"
7EIX9	9"
8EIX9	9"
6EIX10	10"
7RIX10	10"
8RIX10	10"
9RIX10	10"

PART	SIZE
7RIX12	12"
8RIX12	12"
9RIX12	12"
10RIX12	12"
8RIX14	14"
9RIX14	14"
10RIX14	14"
12RIX14	14"
9RIX16	16"
10RIX16	16"
12RIX16	16"
14RIX16	16"
10RIX18	18"
12RIX18	18"
14RIX18	18"
16RIX18	18"
12RIX20	20"
14RIX20	20"
16RIX20	20"
18RIX20	20"

PART	SIZE
14RIX22	22"
16RIX22	22"
18RIX22	22"
20RIX22	22"
16RIX24	24"
18RIX24	24"
20RIX24	24"
22RIX24	24"
18RIX26	26"
20RIX26	26"
22RIX26	26"
24RIX26	26"
20RIX28	28"
22RIX28	28"
24RIX28	28"
26RIX28	28"
22RIX30	30"
24RIX30	30"
26RIX30	30"
28RIX30	30"

**EUA-F Universal Female Adapter - Round****EUA-M Universal Male Adapter - Round**

- Offers secure, listed connections between AmeriVent Type B Gas Vent and other manufacturers' gas vents

PART #	SIZE	A
EUA-F Universal Female Adapter		
3EUA-F	3"	3 ½"
4EUA-F	4"	4 ½"
5EUA-F	5"	5 ½"
6EUA-F	6"	6 ½"
EUA-M Universal Male Adapter		
3EUA-M	3"	3 ½"
4EUA-M	4"	4 ½"
5EUA-M	5"	5 ½"
6EUA-M	6"	6 ½"



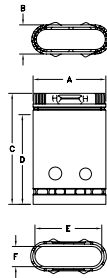
LENGTH - OVAL

Type B	AmeriVent may be installed with 1" minimum clearance to combustibles. (Sizes 3" through 30" round and sizes 4", 5", and 6" oval)
Type BW	Four-inch oval AmeriVent (when installed in 2 x 4 stud wall with recessed heater) requires clearances as determined by use of 4OHD hold-down plate, 4OPS ceiling plate spacers, and 4OFS firestop spacers.
Type B 2x4	4" and 5" oval AmeriVent (when installed in 2 x 4 stud wall with other than recessed heater) requires clearance as determined by use of 4OFS or 5OFS firestop spacers at ceiling level.

CLEARANCES

Underwriters' Laboratories - listed Minimum Clearance to Combustibles

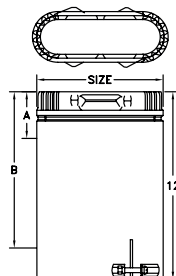
AmeriVent Description	Type	Type
Oval 4" <i>(when installed in 2x4 stud wall with recessed heater)</i>	BW	Clearances as determined by use of 4OHD hold-down plate, 4OPS ceiling plate spacers, and 4OFS firestop spacers
Oval 4" and 5" <i>(when installed in 2x4 stud wall with other than recessed heater)</i>	B - 2x4	Clearance as determined by use of firestop spacers at each ceiling level
Oval 4", 5", 6"	B	1"
Round 3" through 30"	B	1"



Lengths - Oval

The oval pipe offers all the advantages of AmeriVent round pipe, and may be used for the following types of installation:

- 4" Oval:
*Conventional Type B,
Type B-2x4 when used with firestop Type BW*
- 5" Oval:
*Type B,
Type B-2x4*
- 6" Oval:
Type B



Adjustable Length - Oval

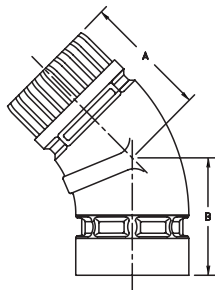
- The adjustable length telescopes onto standard pipe sections to permit adjustments from 3" to 10" to reach desired installation length

PART #	SIZE	A	B	C	D	E	F
4O6	4"	7 1/16"	2 7/8"	6"	4 3/4"	6 1/2"	2 1/4"
4O12	4"	7 1/16"	2 7/8"	12"	10 3/4"	6 1/2"	2 1/4"
4O18	4"	7 1/16"	2 7/8"	18"	16 3/4"	6 1/2"	2 1/4"
4O24	4"	7 1/16"	2 7/8"	24"	22 3/4"	6 1/2"	2 1/4"
4O3	4"	7 1/16"	2 7/8"	36"	34 3/4"	6 1/2"	2 1/4"
4O4	4"	7 1/16"	2 7/8"	48"	46 3/4"	6 1/2"	2 1/4"
4O5	4"	7 1/16"	2 7/8"	60"	58 3/4"	6 1/2"	2 1/4"
5O6	5"	10 3/4"	2 7/8"	6"	4 3/4"	9 3/4"	2 1/4"
5O12	5"	10 3/4"	2 7/8"	12"	10 3/4"	9 3/4"	2 1/4"
5O18	5"	10 3/4"	2 7/8"	18"	16 3/4"	9 3/4"	2 1/4"
5O24	5"	10 3/4"	2 7/8"	24"	22 3/4"	9 3/4"	2 1/4"
5O3	5"	10 3/4"	2 7/8"	36"	34 3/4"	9 3/4"	2 1/4"
5O4	5"	10 3/4"	2 7/8"	48"	46 3/4"	9 3/4"	2 1/4"
5O5	5"	10 3/4"	2 7/8"	60"	58 3/4"	9 3/4"	2 1/4"
6O6	6"	11 1/2"	3 1/4"	6"	4 3/4"	10 7/8"	2 5/8"
6O12	6"	11 1/2"	3 1/4"	12"	10 3/4"	10 7/8"	2 5/8"
6O18	6"	11 1/2"	3 1/4"	18"	16 3/4"	10 7/8"	2 5/8"
6O24	6"	11 1/2"	3 1/4"	24"	22 3/4"	10 7/8"	2 5/8"
6O3	6"	11 1/2"	3 1/4"	36"	34 3/4"	10 7/8"	2 5/8"

PART #	SIZE	A - MIN. LENGTH	B - MAX. LENGTH
4O12A	4"	3"	10"
5O12A	5"	3"	10"
6O12A	6"	3"	10"



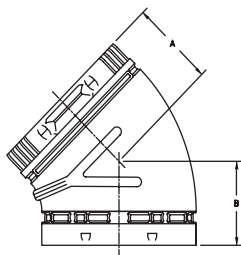
ELBOWS



PART #	SIZE	A	B
4O45S	4"	3"	3"
5O45S	5"	3 1/2"	3 1/2"
6O45S	6"	4"	4"

45° Standard Elbow - Oval

- Used in pairs where offsets are desired in 1" minimum clearance enclosures or open spaces, such as attics or basements
- Add pipe sections between pairs to produce additional offset

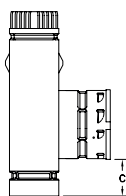
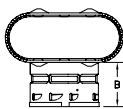
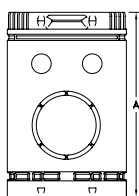


PART #	SIZE	A	B
4O45F	4"	3 3/4"	3 3/4"
5O45F	5"	4 3/4"	4 3/4"
6O45F	6"	5"	5"

45° Flat Elbow - Oval

- Used in pairs where offsets are desired in 1" minimum clearance enclosures or open spaces, such as attics or basements
- Add pipe sections between pairs to produce additional offset

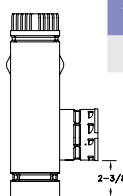
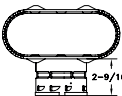
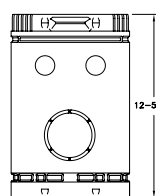
TEE COMPONENTS



PART #	SIZE	A	B	C
4OT	4"	12"	2 9/16"	2 3/8"
5OT	5"	12"	2 9/16"	2 3/8"
6OT	6"	12"	2 5/8"	2 3/4"

Oval Tee

- The branch size and trunk size have equivalent diameter
- The tee branch accepts either double or single wall pipe



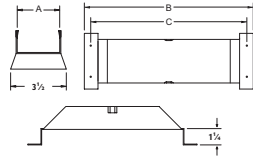
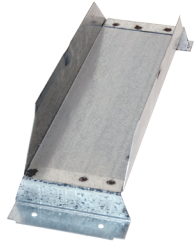
PART #	SIZE	A	B	C
4OT-3	4"	12"	2 9/16"	2 3/8"

Oval Reducing Tee

- The branch size of the reducing tee is one inch smaller than the trunk size



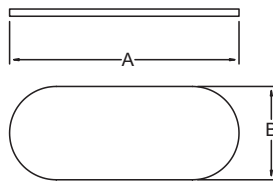
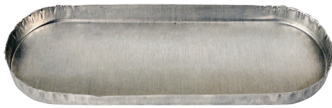
TEE COMPONENTS (CONTINUED)



PART #	SIZE	A	B	C
4OTS	4"	3"	11 1/2"	10 5/8"
5OTS	5"	3"	12 7/8"	12"
6OTS	6"	3 3/4"	14 1/4"	13 3/8"

Oval Tee Support

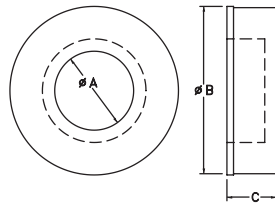
- Used to support and center the oval tee
- Use with the tee cap (OTC)



PART #	SIZE	A	B
4OTC	4"	6 3/16"	2 1/4"
5OTC	5"	9 7/8"	2 1/4"
6OTC	6"	10 5/8"	2 5/8"

Oval Tee Cap

- Used for closing off the bottom of a tee



PART #	SIZE	A	B	C
3-4OTVC	4"	3 1/8" - 4 1/8"	6 3/4"	2"
5OTVC	5"	5 1/8"	6 3/4"	2"
6OTVC	6"	6 1/8"	8 3/4"	2"

Oval Tee Collar

- May be used to cover the rough wall opening and the exposed double-wall connector
- The 3 - 4OTVC collar features a knock-out for a 3" or 4" single wall connector



VENT KIT



Oval Vent Kit

PART # DESCRIPTION

4OV-VK Oval Vent Kit

- Includes:
- 4"x24" Pipe Section Qty 2 (4O24)
 - Oval to Round Adapter (4OE)
 - 4" Oval Type BW Hold-Down Plate (4OHD)
 - 4" Type BW Plate Spacers (4OPS)

RAIN CAPS



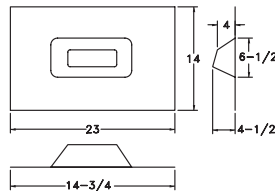
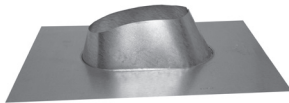
Oval Cap

- Model OCA (Locking)
- Model OC (Universal)

PART #	SIZE	A	B
4OCA	4" oval	5 3/8" x 8 1/2"	3 1/2"
4OC	4" oval	5 3/8" x 8 1/2"	3 1/2"

The 5" and 6" oval vents use an Oval to Round Adapter (OE) and a Round Cap (CW or ECW).

FLASHINGS



PART # SIZE

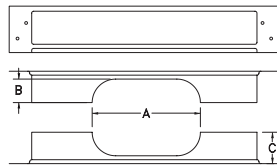
4OF	4"
5OF	5"
6OF	6"

All-Pitch Flashing - Oval

- Installed either parallel or perpendicular to the roof ridge
- Fits roof pitches flat to 5/12



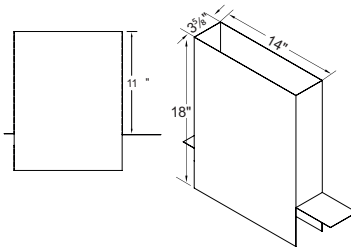
PLATES, SHIELDS, SPACERS



PART #	SIZE	WALL SIZE	A	B	C
4OFS	4"	2" X 4"	7 1/4"	1 1/2"	2"
5OFS	5"	2" X 4"	10 13/16"	1 1/2"	2"
4OFS-6	4"	2" X 6"	7 1/4"	1 1/2"	3"
5OFS-6	5"	2" X 6"	10 13/16"	1 1/2"	3"
6OFS	6"	2" X 6"	11 9/16"	1 11/16"	3"

Firestop Spacers - Oval

- This centers the vent in 16" O.C. stud space and serves as a firestop at the ceiling level
- A required component for Type B 2 x 4 and multi-story Type BW installations

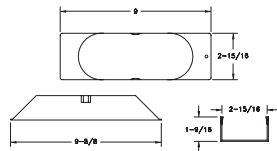


PART

AVS

Type BW Attic Shield - Oval

- Used on a single-story building or on the top story of a multi-story building for Type BW gas vent
- The 26 gauge galvanized sheet metal extends down from the attic to the top of the ceiling plate
- Required by Los Angeles Code and UMC

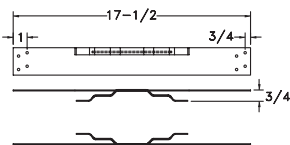


PART # SIZE

4OHD 4"

Type BW Hold-Down Plate - Oval

- Required for connecting Type BW vent to a wall furnace outlet



PART # SIZE

4OPS 4"

Type BW Plate Spacers - Oval

- Required at the first ceiling level above a wall furnace
- The spacers center and provide the required opening between floors
- Firestop spacers must be used at subsequent levels



PART

4OBW

Type BW Installation Kit - Oval

- One pair of Type BW plate spacers (4OPS)
- One BW hold-down plate (4OHD)



STORM COLLARS

PART # SIZE



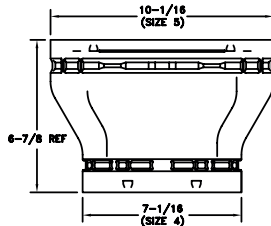
4OSC	4"
5OSC	5"
6OSC	6"

Oval Storm Collar

- Used to provide a weather proof seal to an oval pipe above a roof line
- Installed above the oval flashing
- Seal inner edge with sealant

ADAPTERS

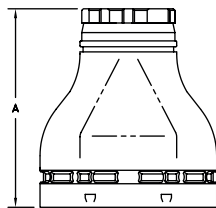
PART # SIZE



4OIX5	4"
-------	----

Oval Increaser

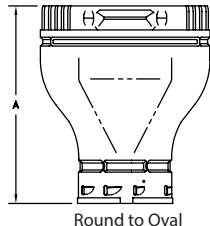
- Permits vent to be increased from 4" oval to 5" oval



PART #	SIZE	A
40E	4"	6 7/8"
50E	5"	9 3/8"
60E	6"	10 3/8"

Oval-to-Round Adapter

- The oval-to-round adapter is used for conversion of vent from oval to round



PART #	SIZE	A
4EO	4"	6 7/8"
5EO	5"	9 3/8"
6EO	6"	10 3/8"

Round-to-Oval Adapter

- The round-to-oval adapter is used for conversion of vent from round to oval



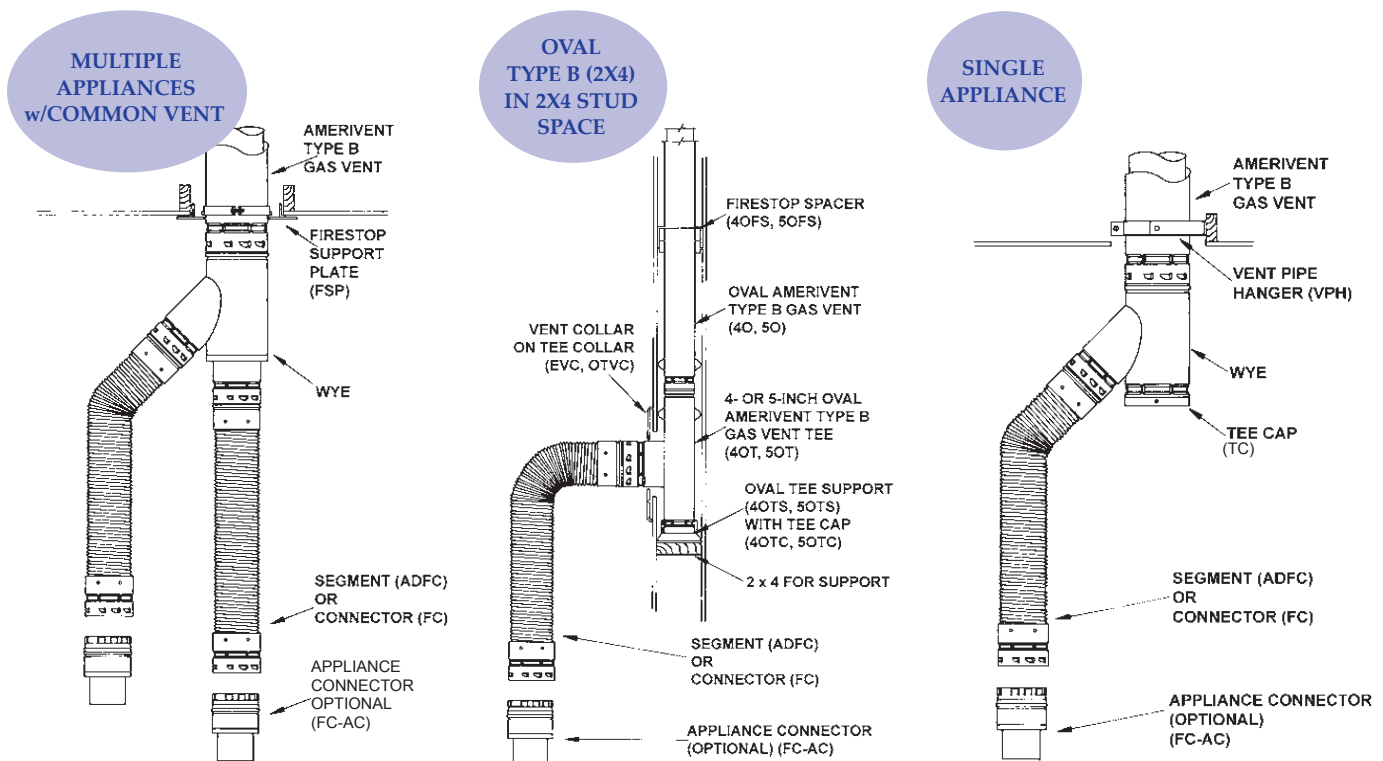
TYPE B GAS VENT ~ GAS VENT CONNECTORS

GAS VENT CONNECTORS

Specifications and Dimensions

	Double-Wall Segment	Single-Wall Segment
Available Flexible Pipe Sizes:	3", 4", 5"	3", 4", 5"
Available Lengths:	24", 36", 48", 60"	12", 24", 36", 48", 60"
Usage	The double-wall flexible gas vent segment can be used as a connector or a segment of a Type B gas vent system. That means it can be installed in unconditioned spaces, such as attics and crawl spaces, anywhere Type B gas vent is used, except where it passes through walls, ceilings, floors, or the roof.	Single-wall flexible gas vent connectors connect appliances to double-wall Type B gas vent. AmeriVent gas vent connectors are used with listed gas appliances with draft hoods or other gas appliances listed for use with Type B gas vent. They cannot be used in unconditioned spaces.
Material / Thickness	Flexible Pipe:	Aluminum Alloy 3003 .012" thickness
	Single-wall Ends:	Aluminum-zinc coated steel .018" thickness
	Rigid Components:	Aluminum-zinc coated steel .018" thickness
Clearances	1" to combustibles. Do not enclose. Do not pass through walls, floors or ceilings	
Approved, Accepted, or Listed by	AGA, NFPA, HUD, NBC, UBC, UL	

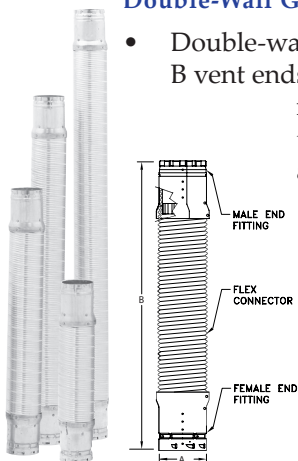
TYPICAL GAS VENT CONNECTORS INSTALLATIONS





LENGTHS

Double-Wall Gas Vent Lengths



- Double-wall corrugated aluminum with B vent ends can be used anywhere B vent is used, except where it passes through walls, floors, ceiling, and inside enclosures
- May be compressed to fit

PART #	A	B
3ADFC24	3"	24"
3ADFC3	3"	36"
3ADFC4	3"	48"
3ADFC5	3"	60"
4ADFC24	4"	24"
4ADFC3	4"	36"
4ADFC4	4"	48"
4ADFC5	4"	60"
5ADFC24	5"	24"
5ADFC3	5"	36"
5ADFC4	5"	48"
5ADFC5	5"	60"

Single-Wall Gas Vent Lengths



- Single-wall corrugated aluminum easily connects from the appliance to AmeriVent Type B gas vent
- May be compressed 4" per foot to shorten length
- Sturdy galvalume ends offer proven snap-lock design
- This product can only be used in the room with the equipment in occupied spaces, not in unoccupied spaces such as attics or crawl spaces
- It cannot be used to pass through a wall, roof or ceiling, and cannot be totally enclosed

PART #	A	B
3FC12	3"	12"
3FC24	3"	24"
3FC3	3"	36"
3FC4	3"	48"
3FC5	3"	60"
4FC12	4"	12"
4FC24	4"	24"
4FC3	4"	36"
4FC4	4"	48"
4FC5	4"	60"
5FC12	5"	12"
5FC24	5"	24"
5FC3	5"	36"
5FC4	5"	48"
5FC5	5"	60"

ASSEMBLIES



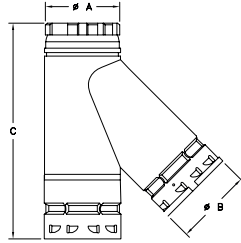
PART #	6 PACK CONSISTS OF
R3FCA-24	6 ea of 24" length
R3FCA-3	6 ea of 36" length

- Assemblies consist of a single-wall flexible connector with an appliance connector and a universal adapter pre-attached
- An assembly allows easy connection from an appliance to any brand of B vent
- 3" diameter



TYPE B GAS VENT ~ GAS CONNECTORS

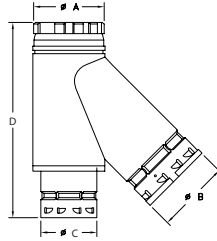
WYES



PART #	SIZE	A	B	C
3FCY	3"	3 1/2"	3 1/2"	9"
4FCY	4"	4 1/2"	4 1/2"	10 1/2"

Standard Single-Wall Wye

- The branch, trunk, and base diameters of the standard single-wall wye are the same size

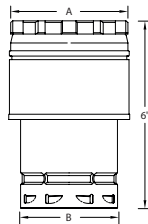


PART #	SIZE	A	B	C	D
4FCY-3	4"	4 1/2"	4 1/2"	3 1/2"	9"
4FCY-33	4"	4 1/2"	3 1/2"	3 1/2"	12"
5FCY-34	5"	5 1/2"	4 1/2"	3 1/2"	12"
5FCY-44	5"	5 1/2"	4 1/2"	3 1/2"	13 1/2"
5FCY-43	5"	5 1/2"	3 1/2"	3 1/2"	13 1/2"

Reduction Single-Wall Wye

- Features a branch and/or base with a diameter smaller than the trunk size
- Convenient connection for furnace and water heater into a common connector

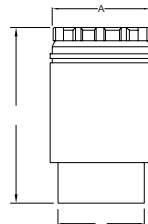
ADAPTERS



PART #	SIZE	A	B
3FCX4	4"	4 1/2"	3 1/2"
3FCX5	5"	5 1/2"	3 1/2"
3FCX6	6"	6 1/2"	3 1/2"
4FCX5	5"	5 1/2"	4 1/2"
4FCX6	6"	6 1/2"	4 1/2"
5FCX6	6"	6 1/2"	5 1/2"

Single-Wall Increaser

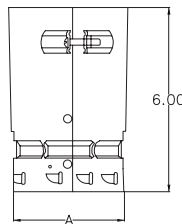
- Used to increase the connector diameter



PART #	SIZE	A	B	C
3FC-AC	3"	3 1/2"	3"	6"
4FC-AC	4"	4 1/2"	4"	6"
5FC-AC	5"	5 1/2"	5"	6"

Single-Wall Appliance Connector

- Sized to fit outlet
- Use sheet metal screws for code approved appliance connection



PART #	SIZE	A
3FCA	3"	3 1/2"
4FCA	4"	4 1/2"
5FCA	5"	5 1/2"

Single-Wall Universal Adapter

- Provides a short slip connection with the AmeriVent single-wall snaplock base



FLEXI-LINER ALUMINUM CHIMNEY LINER KITS

- Kits include Flexible length, round top, flashing, mortar guard
- Standard kit lengths of 25' and 35' (15' available for 3", 4", 5")
- Available in 3", 4", 5", 5½", 6", 7" and 8" diameters in both kits and 10' extensions
- 10' insulated sleeve has tough polyethylene exterior
- Extension kit includes Flexi-Liner length with flex connector and fastener package
- Pull-downs stretch and lead the Flexi-Liner down the chimney and assist in pulling insulated sleeve over liner

Specifications

Liner Material	Aluminum 3003, 2-ply (0.005" each)
Maximum Flue Gas Temp	470°F
Available Size Range	3" to 8" diameter
Standard Kit Length	25' and 35'
Stretch Ratio	5:1 (approximate)
Clearances	0" between liner and chimney interior 0" between combustible materials and chimney exterior

PART #	SIZE
Universal B-Vent Adapters	
3ALK-VA	3"
4ALK-VA	4"
5ALK-VA	5"
6ALK-VA	6"
7ALK-VA	7"
8ALK-VA	8"
Flex Connectors	
3ALK-FC	3"
4ALK-FC	4"
5ALK-FC	5"
55ALK-FC	5 ½"
6ALK-FC	6"
7ALK-FC	7"
8ALK-FC	8"
Pull-Downs	
3FX-PD	3"
4FX-PD	4"
5FX-PD	5"
55FX-PD	5 ½"
6FX-PD	6"
7FX-PD	7"
8FX-PD	8"



PART # SIZE & WIDTH LENGTH

Kit Aluminum

3ALK15	3"	15'
3ALK25	3"	25'
3ALK35	3"	35'
4ALK15	4"	15'
4ALK25	4"	25'
4ALK35	4"	35'
5ALK15	5"	15'
5ALK25	5"	25'
5ALK35	5"	35'
55ALK25	5 ½"	25'
55ALK35	5 ½"	35'
6ALK25	6"	25'
6ALK35	6"	35'
7ALK25	7"	25'
7ALK35	7"	35'
8ALK25	8"	25'
8ALK35	8"	35'

Extension Kits

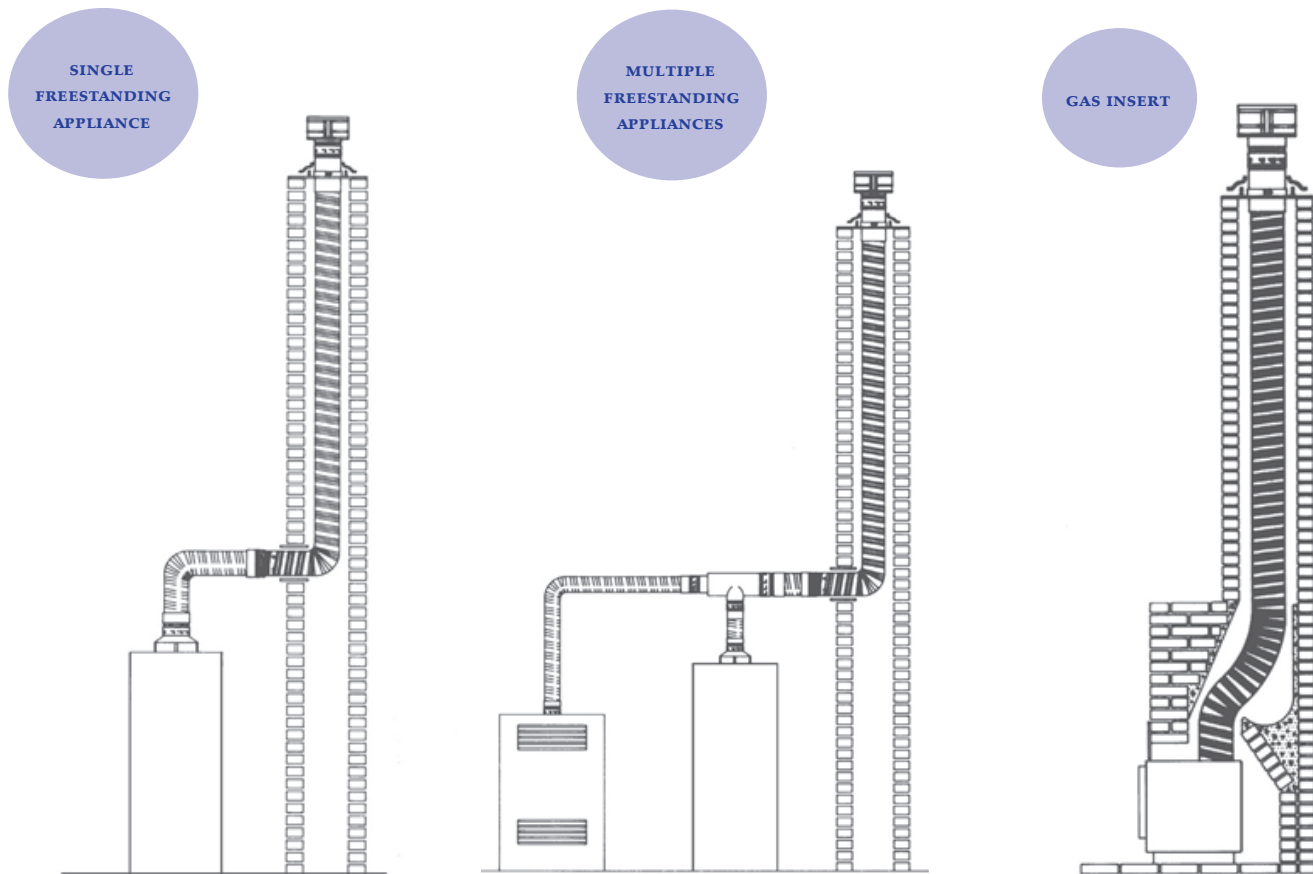
3ALKE10	3"	10'
3ALKE25	3"	25'
3ALKE35	3"	35'
4ALKE10	4"	10'
4ALKE25	4"	25'
4ALKE35	4"	35'
5ALKE10	5"	10'
5ALKE25	5"	25'
5ALKE35	5"	35'
55ALKE10	5 ½"	10'
55ALKE25	5 ½"	25'
55ALKE35	5 ½"	35'
6ALKE10	6"	10'
6ALKE25	6"	25'
6ALKE35	6"	35'
7ALK10	7"	10'
7ALK25	7"	25'
7ALK35	7"	35'
8ALK10	8"	10'
8ALK25	8"	25'
8ALK35	8"	35'

Insulated Sleeves

4ALK-FS	3" to 4"	10'
5ALK-FS	5"	10'
6ALK-FS	5 ½" to 6"	10'
7ALK-FS	7"	10'
8ALK-FS	8"	10'



Recommended Installations for Listed Gas Appliances



Note: Installations are shown with AmeriVent flexible single-wall connectors.

Freestanding appliances may also use AmeriVent Type B gas vent or code-approved single-wall material between appliance and liner.

INDEX

CATEGORY	TLC	HS HSS	Direct Vent	Pellet Pipe	DCC	Chimney Liners	Type B Round	Type B Oval	Gas Connectors	Alum Liners
Adapters	19	32	43	55	62		82	89	92	
Aluminum Chimney Liners										93
Anchor Plates	11	27								
Assemblies									91	
Ceiling Supports	12	27	40	52						
Collinears			39							
Elbows	6	23	37	49	61		73	85		
Firestop			41	53			78			
Flashing	16	32	42	54			80	87		
Flex Connectors						67				
Insulation	19					67				
Lengths	4	23	36	48	60	66	72	84	91	
Miscellaneous			43	57	64					
Plates		29						88		
Pull Downs						67				
Rain Caps	8	25	38	51			77	87		
Roof Supports	11	26								
Roof Braces	12	27								
Shields	14	31	41	53				88		
Spacers								88		
Spark Arrestors	8	25								
SS Locking Bands	4									
Storm Collars	18	30	42	54			82	89		
Tee Components	5	24		49	62		74	85		
Trim Collar	13	28	41	53						
Universal Finishing Band					64					
Universal Snow Splitter	9									
Vent Collar							81			
Vent Kit								87		
Vent Pipe Hangers							76			
Wall Bands	9	25	40	51						
Wall Support	10	26								
Wall Thimble	15	31	42	54			79			
Wind Screen			40							
Wye							76		92	

AmeriVent
5030 Corporate Exchange Blvd.
Grand Rapids, MI 49512

800-423-4270
800-626-3825 Fax
800-669-3190 Technical Support

ameri-vent.com



WARD
INDUSTRIES

SELKIRK
STRONG.

rps

HART **COOLEY**
install confidence.

Lima

AMPCO

REZZIN

polyflue

PORTALSPLUS

AirMate

heatfab

AMERIFLEX

AmeriFlow
by Hart & Cooley, Inc.

MILCOR

GRILLES | REGISTERS | DIFFUSERS | FLEXIBLE AIR DUCT | VENT | CHIMNEY | FILTERS | FLEXIBLE AIR DUCT
ACCESS DOORS | EXHAUST DUCTS | DUCT COMPONENTS | ROOFING PRODUCTS | HATCHES | SMOKE VENTS